

*Western New York & Pennsylvania Railroad, LLC*



**SHRP2 DOT Mitigation Strategies (R16)  
Peer Exchange**

Miami, FL

September 13, 2018

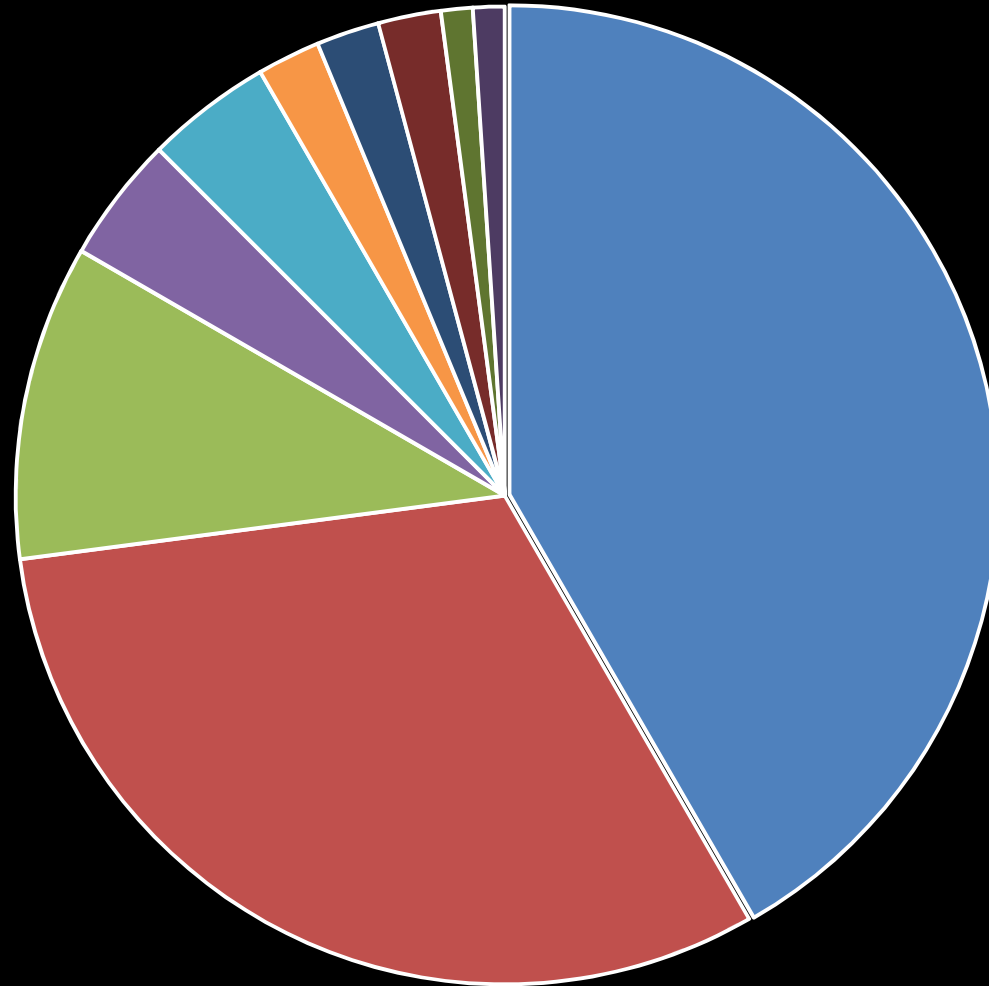


# WESTERN NEW YORK & PENNSYLVANIA

# Western New York & Pennsylvania Railroad LLC



# Commodities



Wax - Petroleum Crude  
Glass Sand  
Chemicals  
Lumber

Fracking Sand  
Feed  
Plastics

Aggregates  
Fertilizer  
Scrap



# WNYP Customers



International Wax Group

Keane Sand

G.O. Hawbaker Aggregates

Suit-Kote Corporation

Dresser-Rand/Siemens

Sargent Transportation

Todd R. Shearer Ag Commodities

Ardagh Glass

Lord Chemicals

Bush Industries

Jacob A. Weaver Lumber

Monofrax

Lincoln Recycling

Cargill/Growmark

Ainsworth Pet Care/Smuckers

# Dresser-Rand Hi-Wides



## Safety - Security

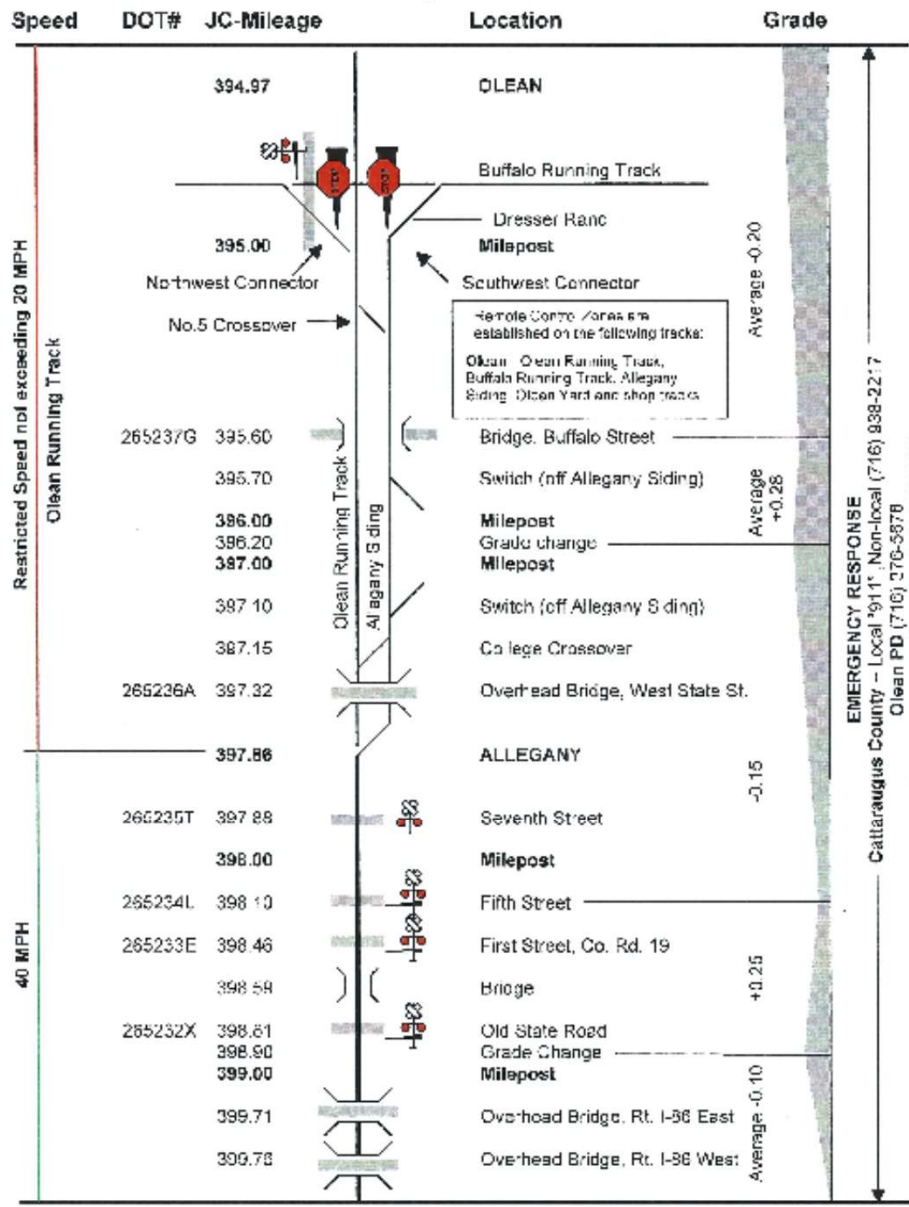




# WESTERN NEW YORK & PENNSYLVANIA

Main Line - OLEAN, Mileage JC-394.97 to Mileage JC-399.76

WEST



EMERGENCY RESPONSE  
 Cattaraugus County - Local 911, Non-local (716) 938-2217  
 Olean PD (716) 376-5678  
 St. Bonaventure Security (716) 375-2525  
*Allegany PD (716) 373-0873*



# Track upgrades



## State transportation grant /loan programs

Many states have developed comprehensive rail plans and fund these plans through the state's general fund.

- Alabama
- California
- Connecticut
- Iowa
- Indiana
- Kansas
- New Jersey
- New York
- North Carolina
- Ohio
- Oklahoma
- Oregon
- Pennsylvania
- Virginia
- Washington



## State transportation grant /loan programs

- PennDOT Rail Freight Assistance Program (RFAP)
  - Preserve essential freight service
  - Stimulate rail freight economic development
  - 70 percent of the total project costs, not to exceed \$700,000
- PennDOT Rail Transportation Assistance Program (RTAP)
  - Works as part of state capital budget
  - Must have a budget line item
  - Funds up to 70% of project
- E-filed at “DOTGrants”
- Combined \$30-40MM/year



- NYSDOT Consolidated Funding Application Program (CFA)
  - Legislature and Governor fund a pool from time to time to spur economic development
  - e-application process
  - regional economic development agencies are the judges
  - Funds up to 100% of project
  
- NYSDOT Rail Division
  - grant program is PFRAP - \$25mm
  - annual application windows, e-filed
  
- NYSDOT Bond Act Grants
  - Member items

THE AMERICAN RAILWAY ENGINEERING AND  
MAINTENANCE OF WAY ASSOCIATION

**AREMA<sup>®</sup>**

Manual for Railway Engineering



AMERICAN SHORT LINE AND  
REGIONAL RAILROAD ASSOCIATION

## Grade Crossing Issues

- Goal #1 - Close them
- Determining the type of traffic devices
  - Federal preemption
- Determining the type of highway surface
- Use of Federal Sec 130 funds
- Why must we close the road to fix it?
  - detours and traffic control plans
- Improving highway surface profiles
- Sidewalks – ADA compliance and detectable warning devices

S.R. 446  
Eldred, PA



S.R. 446  
Eldred, PA



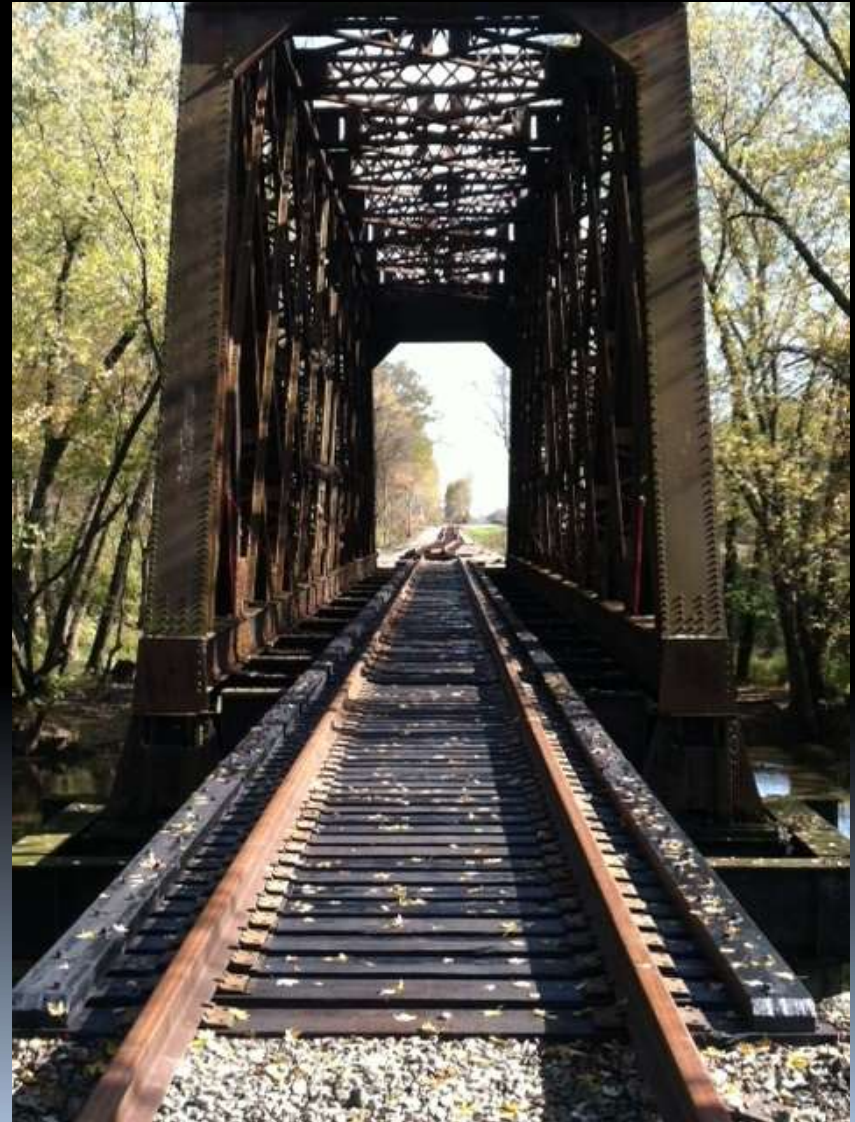




## Bridge Issues

- WNYP has 275 of all types across 330 miles
- Clearances at highway under structures
  - tractor-trailer strikes
- Clearances at highway over structures
  - double stacks and auto racks – 23 ft.
- Inspections of highway/railway bridges
  - painting and repairs – flag protection
- Deteriorated concrete over highways

## Bridge rating and 286K upgrades

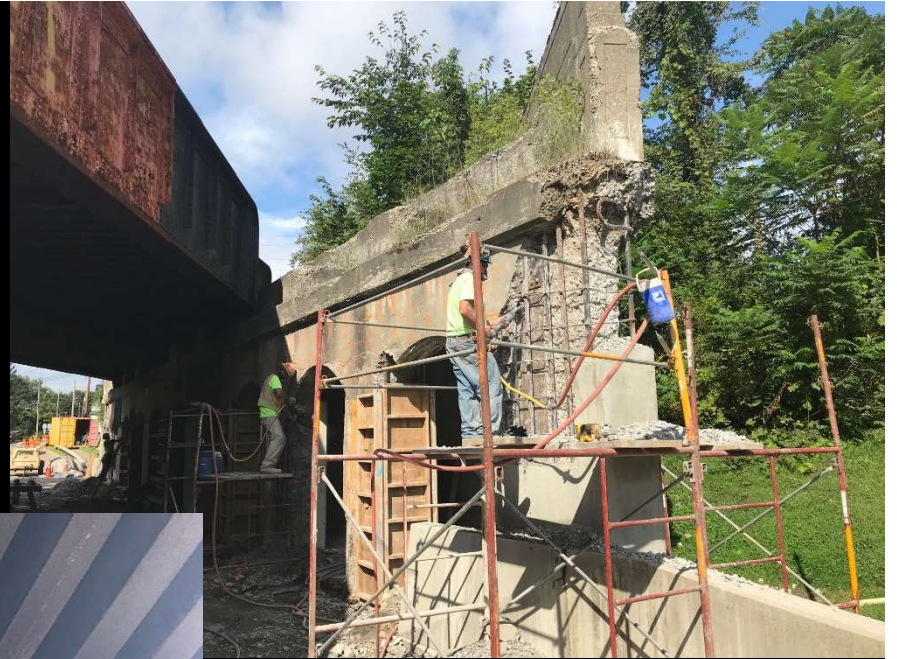


Falconer, NY



# Concrete Bridge Repairs

Jamestown, NY



**Concrete Bridge  
Repairs**

**Salamanca, NY**

# Parallel Highway/Railway Corridors

- Drainage
- Accidents
- Trespassers
- Surveying
- Flagging
- Repair projects
- Retainer walls





Highway Wall  
Repairs  
Reno (Oil City), PA

~ Thank You ~



Carl P. Belke  
President & COO - RETIRED  
(908) 625-7776 –cell  
[cpbelke@outlook.com](mailto:cpbelke@outlook.com)  
Follow us on Twitter @WNYPRR14760