



# Community of Interest Railroad-DOT Mitigation Strategies (R16) Webinar

September 27, 2016



U.S. Department of Transportation  
Federal Highway Administration

AMERICAN ASSOCIATION  
OF STATE HIGHWAY AND  
TRANSPORTATION OFFICIALS

**AASHIO**

# Welcome and Introductions

- Joe Taylor, FHWA Project Lead
- Pam Hutton, AASHTO SHRP2 Implementation Manager and Co-Product Lead
- Kate Kurgan, AASHTO Co-Project Lead
- Sherry Appel, CH2M and the Project Manager
- Mike Loehr, CH2M's subject matter expert
- Representatives from state departments of transportation, railroads, and interested parties

# Purpose of Today's Webinar

## Goals for Today's Effort

- Understand the SHRP2 program and Railroad-DOT Mitigation Strategies (R16)
- Understand the role of the Community of Interest
- Identify topics or programs the COI might focus on in the years ahead

# Agenda

- Welcome and SHRP2 Overview
- Making this **YOUR** COI
- Summary of Current and Future Activities
- The Railroad Perspective
- Next Steps




# A Few Housekeeping Details

- **Tell us what you think.** We want to hear from all of you on the call during the discussion segments.
- **Your phones will be muted during the presentations. To unmute your phone to ask a question or make a comment, press #6.**
- **Please do not put us on hold; if you need to step away, end the call and call back in** (we don't want to hear your muzak!)
- **State your name and organization before speaking.** You can also comment by typing in the chat box.
- **Download agenda and PDF of this presentation from Handouts section.**

# **Overview of SHRP2 and Railroad-DOT Mitigation Strategies (R16)**

***Pam Hutton, AASHTO SHRP2 Implementation  
Manager***

***Joe Taylor, Office of Infrastructure, Federal  
Highway Administration***

A decorative graphic consisting of several thick, parallel blue diagonal stripes that originate from the bottom left and extend towards the top right, creating a sense of motion and depth.

# SHRP2 Overview

- **SHRP2 Solutions** – 63 products
- **Solution Development** – processes, software, testing procedures, and specifications
- **Field Testing** – refined in the field
- **Implementation** – 430 transportation projects; adopt as standard practice
- **SHRP2 Education Connection** – connecting next-generation professionals with next-generation innovations



# Focus Areas



**Safety:** fostering safer driving through analysis of driver, roadway, and vehicle factors in crashes, near crashes, and ordinary driving



**Reliability:** reducing congestion and creating more predictable travel times through better operations



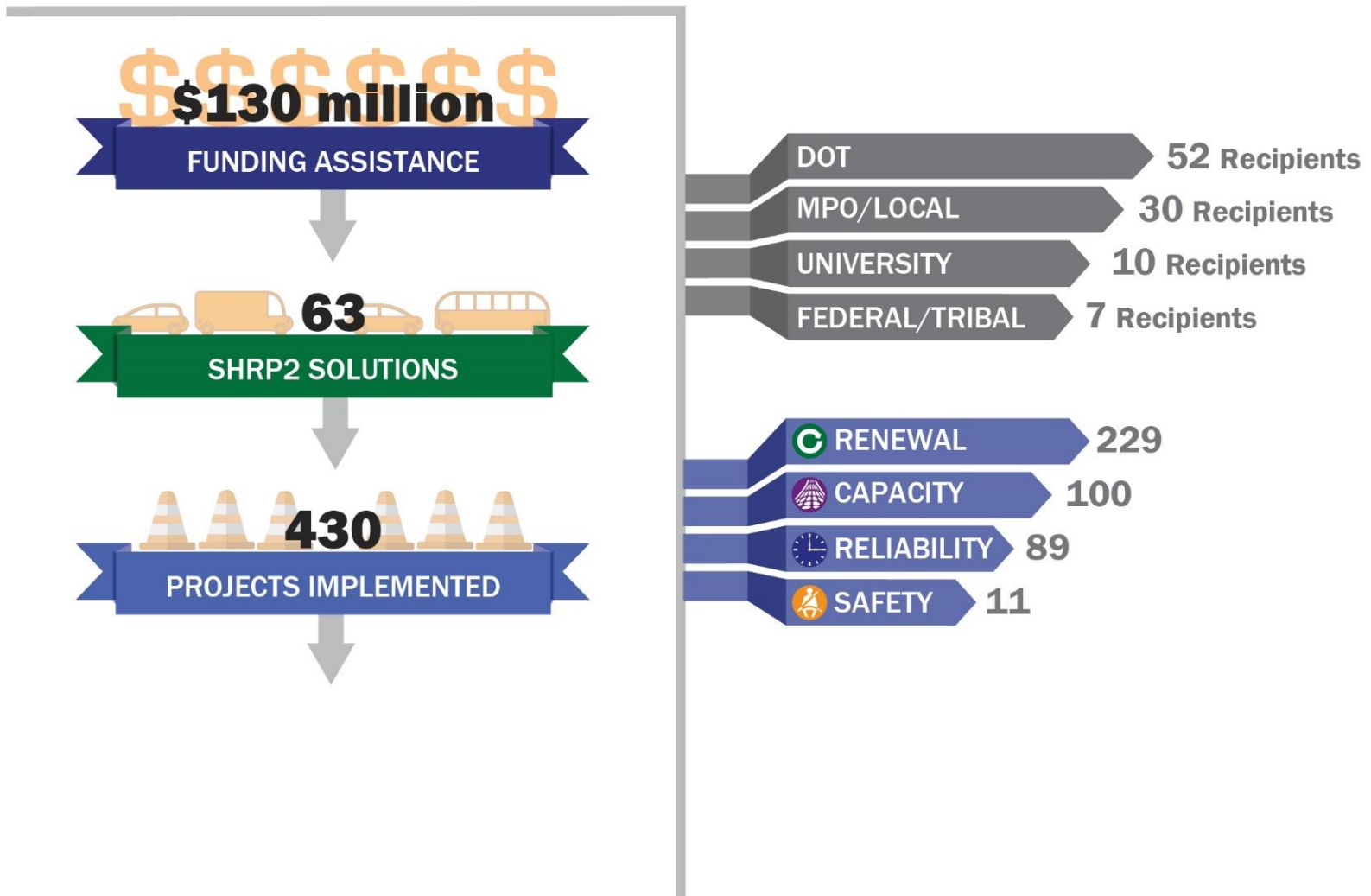
**Capacity:** planning and designing a highway system that offers minimum disruption and meets the environmental and economic needs of the community



**Renewal:** rapid maintenance and repair of the deteriorating infrastructure using already-available resources, innovations, and technologies



# SHRP2 Implementation: Moving Us Forward



# SHRP2 Implementation: Moving Us Forward



# SHRP2 Implementation Assistance Program

- Designed to help State DOTs, MPOs, local agencies, and other interested organizations deploy SHRP2 Solutions.

Proof of Concept Pilot	Lead Adopter Incentive	User Incentive
To evaluate product readiness.	To help offset costs associated with product implementation and risk mitigation.	To support implementation activities, such as conducting internal assessments, changing processes, and organizing peer exchanges.

# Railroad-DOT Mitigation Strategies (R16)

## Challenge

- Railroad-DOT interaction requires a thorough review of the safety, engineering, and the operational impacts of a roadway project during construction – since it will have lasting effects on the railroad for decades thereafter. Rapid construction goals require a new approach that eases the project agreement process for both industries.

## Solution

- Recommended practices, model agreements, and training materials to help resolve potential conflicts.



# Available Solutions

- **Best practices and streamlined processes**
  - Facilitates beneficial relationships between railroads and public transportation agencies
    - Institutional arrangements
    - Innovative partnering techniques
    - Approaches to ensure collaboration
- **Standardized (Master) agreements**
- **Partnering Processes**



# Streamlined Processes and Agreements

## Best Practices

- **Streamlined internal and external coordination**
- Single point of first contact and coordination
- Dedicated railroad project managers
- Formal agreed upon points of concurrence
- Formal project management
- **Meetings**

## Processes

- Process manual
- Standardized crossing improvement contract process
- **Streamlined flagging process**
- Expediting right-of-way access
- **Streamlining agreement processing**
- Escalation process to expedite issues
- **Partnering processes**
- Electronic workflow agreement process

## Agreements

- Standardized (Master) agreements
- Partnering Memorandum of Understanding

# Benefits of Using Railroad-DOT Mitigation Strategies

- Expedited project delivery
- Better management of limited resources
- Improve communication, cooperation, collaboration
- Streamlined processes
- Transparency
- Improved quality & safety
- Win-win solution
- Less risk!





# Why is this Valuable?

- **Washington State DOT**

- Streamlined Work Flow with clearly defined roles and responsibilities dramatically reduced the need for escalation of Issues – from 15% to less than 1% of projects

- **Florida DOT**

- Flagging Agreement saved \$200K

- **Texas DOT**

- Reduced railroad agreement processing from 16+ weeks to as little as 4-6 weeks when using standard format agreements.
- Simple maintenance agreements - 2/3 of State projects - reduced from 2-3 month turnaround to less than 1 month.



# Discussion

- Does this provide you with a clear understanding of the *Railroad-DOT Mitigation Strategies* product?
- Questions or comments?
- (Remember, to unmute your phone, press #6.) You can also type any questions in the Questions Box.

**Making this *your*  
Community of Interest**  
***Kate Kurgan, AASHTO Co-Product  
Lead***  
***Sherry Appel, R16 Project Manager***

The bottom right portion of the slide features a decorative graphic consisting of several thick, parallel blue diagonal stripes that originate from the bottom edge and extend towards the top right corner, creating a sense of movement and depth.

# What is the Community of Interest?

- **What is it?**

- Neutral platform to discuss efforts to improve coordination and communications between transportation agencies and their respective railroads
- Opportunity for face-to-face peer exchanges and collaboration
- Opportunity to share best practices, lessons learned, challenges, new processes, agreements, and other information

- **Who is represented?**

- State DOTs
- Class 1 Railroads
- Short Lines
- Transportation Associations
- FHWA/AASHTO/FRA

## **How often will COI meet?**

- 2 in-person meetings
- 4-5 webinars  
*(through mid-2018)*

# Highlights from Previous COI

- Part of TRB research phase, conducted in 2012
- Paired 5 Railroad-DOTs to beta-test innovations
- Role of COI Members:
  - Serve as advocates and subject matter experts
  - Advocate for best practices and get buy-in from railroads and other transportation agencies
  - Advise on outreach for national adoption
  - Identify and share innovations with peers
  - Test innovative practices and agreements

# Priorities from Previous COI

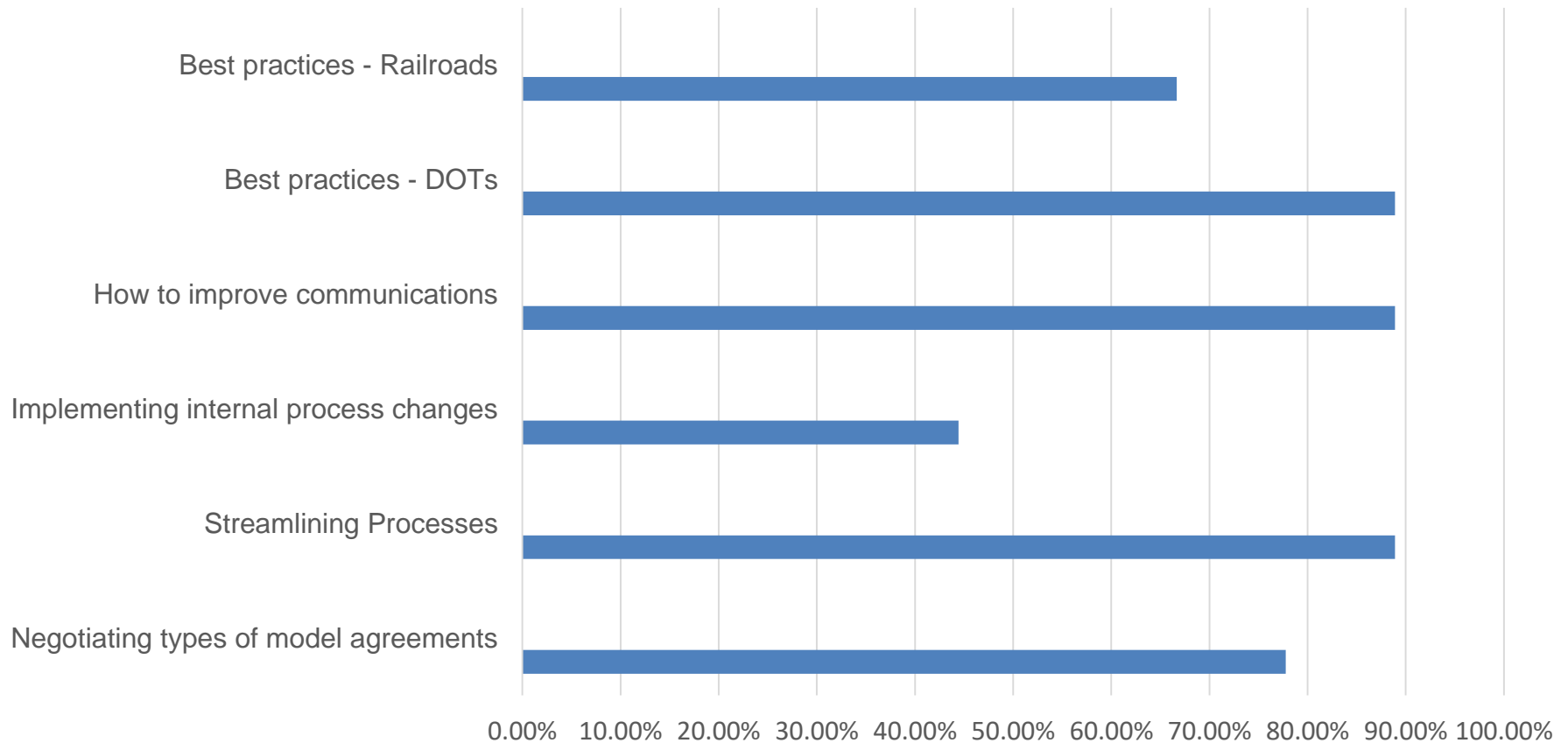
- **Priorities *Then***
  - Identify needed case studies (“one-stop shops”; work flows; importance of regular joint meetings)
  - Develop a best practice on streamlining the easement permit process
  - Identify specific agreements that would speed construction

**But what are *your* Priorities  
now?**



# Initial Questionnaire Results

Initial Questionnaire Results (9 respondents)



# Polling Question 1

## POLLING QUESTION 1



# Polling Question 2

## POLLING QUESTION 2

# Polling Question 3

## POLLING QUESTION 3

# Polling Question 4

## POLLING QUESTION 4

# Discussion

- Does this provide you with a clear understanding of the COI and what we will work to accomplish?
- Questions or comments?
- Are there states that you would particularly like to hear from during the COI meetings?
- (Remember, to unmute your phone, press #6)

# **Summary of Current and Future Activities**

***Mike Loehr, CH2M Subject Matter  
Expert***

A decorative graphic consisting of several thick, parallel blue diagonal stripes that originate from the bottom left and extend towards the top right, creating a sense of movement and depth.

# Implementation Assistance Program States

Round 2	Round 5	Round 7
Arkansas	Delaware	Oregon
Colorado	District of Columbia	Virginia
Idaho	Florida	
Pennsylvania	Kentucky	
South Dakota	Utah	
Texas	New York	
California	North Carolina	

More information on these activities at:

[http://shrp2.transportation.org/Pages/R16\\_RailroadDOTMitigationStrategies.aspx](http://shrp2.transportation.org/Pages/R16_RailroadDOTMitigationStrategies.aspx)



# *A DOT Perspective*



**Allen Rust**  
Rail Coordinator  
Kentucky Transportation Cabinet



U.S. Department of Transportation  
Federal Highway Administration

AMERICAN ASSOCIATION  
OF STATE HIGHWAY AND  
TRANSPORTATION OFFICIALS

**AASHIO**

# KYTC R16 Efforts



- Master Agreements
  - Review existing master agreements
  - Enter into new ones
  - Incorporate Section 130 into master agreements
- Update Rail Crossing Inventory (RCI)
  - Web app
  - Mobile app
- Host meetings with Railroads



## **Kentucky Utility and Rail Tracking System (KURTS)**

- Organize and streamline coordination process
  - Plan and comment submittals
  - Draft agreements, delivery orders, letters
  - Electronic invoicing
  - Project file and archive



# *A DOT Perspective*

**Dan Leonard**  
Grade Crossing Engineer  
Pennsylvania Department of  
Transportation



U.S. Department of Transportation  
Federal Highway Administration

AMERICAN ASSOCIATION  
OF STATE HIGHWAY AND  
TRANSPORTATION OFFICIALS

**AASHIO**

# Pennsylvania Initiatives



- **PA Hazard Index**
  - Build on FRA WBAPS output
  - Add add'l. hazard info to refine crossing list
  - Good research document of existing practices to share
  - Consultant still working
  - Depends on Railroads reporting good data to FRA!
- **Railroad Coordination Meetings**
  - CN May 2016
  - G&W October 2016
  - Build on model used with NS & CSX meetings

# Pennsylvania Initiatives (cont.)

- **Peer States review and meetings**
  - Illinois and Michigan chosen
  - Good listing of states to share
  - PA Govt. budget issues, travel ban and workload have delayed state visits
- FHWA, AASHTO, and CH2M staff have been engaging and good to work with.



# *A DOT Perspective*

**Mike Loehr for the  
South Dakota Department of  
Transportation**



U.S. Department of Transportation  
Federal Highway Administration

AMERICAN ASSOCIATION  
OF STATE HIGHWAY AND  
TRANSPORTATION OFFICIALS

**AASHIO**

# R16 Railroad-DOT Agreements Workshop

## Pierre, SD

### May 9, 2016

- SDDOT (18)
  - Secretariat
  - Legal Counsel
  - Air, Rail, & Transit
  - Operations
  - Project Development
  - Right of Way
  - Roadway Design
  - Bridge Design
  - Research
- CH2M (2)
- Railroads (7)
  - BNSF
  - Genesee & Wyoming
  - Ellis & Eastern
  - State of South Dakota
- Local Gov'ts (3)
  - City of Aberdeen
  - City of Sioux Falls
  - SDLTAP
- AASHTO (1)
- FHWA (3)
  - SD Division
  - Infrastructure Office



# R16 Railroad-DOT Agreements Workshop

## Pierre, SD

### May 9, 2016



## Multi-Agency Action Teams

- Agreements
  - Catalog Agreements
  - Develop Templates
- Processes
  - Map & Cross-Reference RR and DOT processes & timetables
- Communication
  - Compile Technical & Legal Contact Lists
- Proactive Coordination
  - Design
  - Construction
  - Maintenance


## Contact Information

Dave Huft

[dave.huft@state.sd.us](mailto:dave.huft@state.sd.us)

605.773.3358

MEETING SUMMARY  
SHRP2 R16 Railroad-DOT Agreements Workshop  
May 9, 2016



Attendees:

Interest	Division	Office	Names	
SDDOT	Secretariat	Secretary's Office	Joel Jundt Ben Orsbon	
		Legal Counsel	Karla Engle Bonnie Olson	
		Air, Rail & Transit	Bruce Lindholm Lynn Kennison	
	Finance & Management			
		Operations	Yankton Area Rapid City Area	Rod Gail Steve Palmer
	Planning & Engineering	Bridge Design	Division Director	Mike Behm
			Project Development	Steve Johnson Bruce Prouty Lance Birger
			Research	Dave Huft Bob Longbrans
		Right of Way		Joel Gengler Fred Leetch Michael Young
			Roadway Design	Pete Longman Karen Olson
			Burlington Northern Santa Fe	Sanrod Dhiru Kris Swanson
	Railroads	Genesee & Wyoming (Rapid City, Pierre & Eastern)		Gary Bate Greg Christenson Jason Peery
Ellis & Eastern			Clark Meyer	
City of Aberdeen			Stu Nelson	
Local Governments	City of Sioux Falls		Troy Miller	
	SD Local Transportation Assistance Program		Kate Skorsmith Joe Taylor	
FHWA	South Dakota Division		Bruce Hunt Ron McMahon	
AASHTO			Kate Kurgan	
CH2M			Mike Loehr	
			Jennifer Smoker	

Participants by Phone: Jason Peery, Genesee & Wyoming

COPY TO: Dave Huft, Joe Taylor, Kate Kurgan, Mike Loehr, Sherry Appel  
 PREPARED BY: Mike Loehr, Jen Smoker  
 MEETING DATE: Monday, May 9, 2016  
 MEETING TIME: 9:30 am - 4:30 pm EST  
 VENUE: Becker/Hansen (Transportation) Building - Room B-17, 700 East Broadway Avenue, Pierre, SD  
 AGENDA ATTACHED

# The Railroad Perspective







# *A Railroad Perspective*

**Sarod Dhuru**  
Manager of Public Funding  
BNSF Railway



U.S. Department of Transportation  
Federal Highway Administration

AMERICAN ASSOCIATION  
OF STATE HIGHWAY AND  
TRANSPORTATION OFFICIALS

**AASHIO**

# Railroad-DOT Mitigation Strategies (R16)

## Key Requirements:

- Target projects through SHRP2
- Leadership origins FRA/FHWA
- Needed regional support and encouragement
- Better understanding between funding/process/desire to implement

## Possible Solutions:

- 1 on 1 approach to agree on collaborating and offering help
- More awareness at regional meetings
- Multimodal Freight Planning
- Freight Planning Requirements Network





## ***A Railroad Perspective***

**Amanda DeCesare**

Public Projects Project Manager, CSX

**Troy Creasy**

Public Projects Project Manager, CSX



U.S. Department of Transportation  
Federal Highway Administration

AMERICAN ASSOCIATION  
OF STATE HIGHWAY AND  
TRANSPORTATION OFFICIALS

**AASHIO**

# CSX Best Practices



- R16 implementation must start with the DOTs- CSX will adapt to meet the individual DOT's needs.
- Master Agreements streamline agreement processing
- Regular face-to-face meetings between railroad and DOT build camaraderie and foster good communication
- Early communication is key to a successful project- earlier plan reviews reduce cost overall by catching errors that could cause redesign.

# Discussion

- Questions or comments?
- (Remember, to unmute your phone, press #6)



# **Next Steps**

***Kate Kurgan***



# Next Steps

- In-Person Meeting Venues (polling question)
- Possible Agenda Topics:
  - Mission Statement
  - More DOT-Railroad Sharing Opportunities
  - Discussion of Best Practices
  - Identification of Possible Case Studies
- Questions/Comments?
- To speak, please remember to unmute your phone by pressing #6.

# For More Information

## Product Leads:

**Joe Taylor**

FHWA Product Lead

[joseph.taylor@dot.gov](mailto:joseph.taylor@dot.gov)

**Pam Hutton**

AASHTO Co-Product Lead

[phutton@aaashto.org](mailto:phutton@aaashto.org)

**Kate Kurgan**

AASHTO Co-Product Lead

[kkurgan@aaashto.org](mailto:kkurgan@aaashto.org)

## Additional Resources:

**GoSHRP2**

Website:

[fhwa.dot.gov/GoSHRP2](http://fhwa.dot.gov/GoSHRP2)

**AASHTO SHRP2**

Website:

<http://shrp2.transportation.org>

**R16 Product**

Page

[http://shrp2.transportation.org/Pages/R16\\_RailroadDOTMitigationStrategies.aspx](http://shrp2.transportation.org/Pages/R16_RailroadDOTMitigationStrategies.aspx)



**Thanks for joining us!**

