

# Eco-Logical Webinar Series



## Implementing Eco-Logical Panel

### *Funding Opportunities for the Eco-Logical Approach*

#### Panelists

Gary Jensen, FHWA

Michael Lamprecht, FHWA

Marlys Osterhues, FHWA

Mike Ruth, FHWA

Shari Schaftlein, FHWA

Spencer Stevens, FHWA

Jody Mccullough, FHWA

Shannon Eggleston, AASHTO

Kate Kurgen, AASHTO

Dianna Noble, AASHTO

Greg Akers, West Virginia Department of Transportation

Katie Benouar, California Department of Transportation

Stephen Williams, Thomas Jefferson Planning District  
Commission

**Moderator:** Haley Peckett, Volpe Center

**Volpe** The National Transportation Systems Center  
*Advancing transportation innovation for the public good*



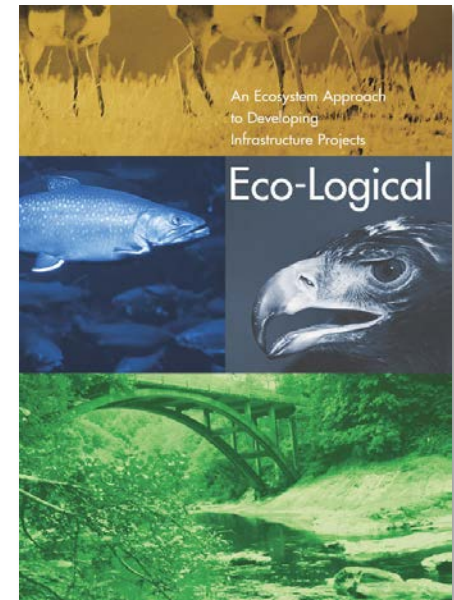
U.S. Department of Transportation  
Federal Highway Administration



U.S. Department of Transportation  
Research and Innovative Technology Administration  
John A. Volpe National Transportation Systems Center

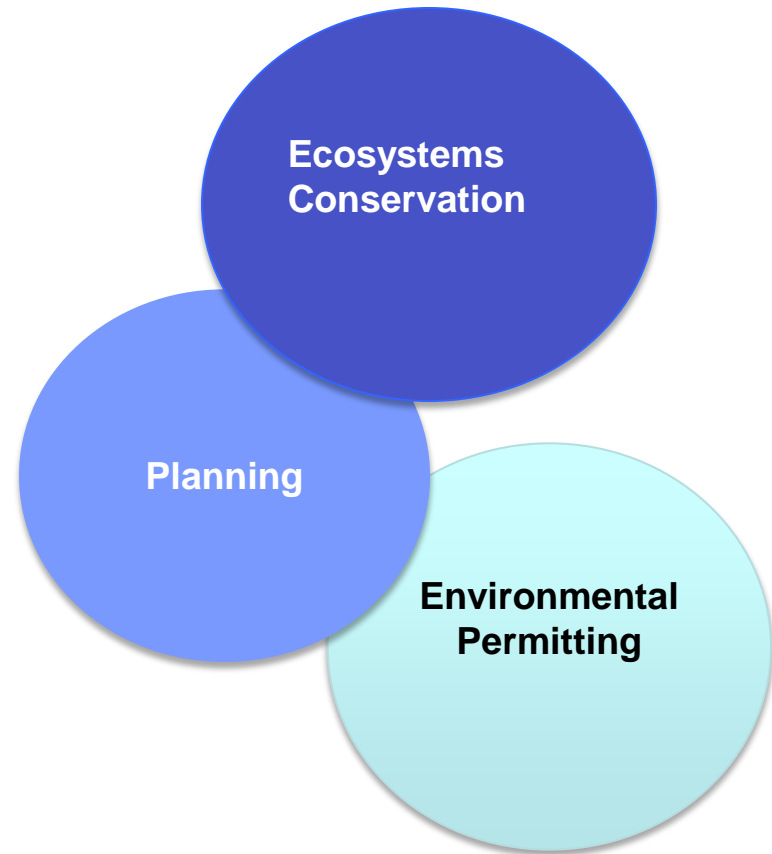
# Implementing Eco-Logical – Background

- Builds on *FHWA's Eco-Logical: An Ecosystem Approach to Developing Infrastructure Projects (2006)*
- Fills a gap by addressing challenges in planning for ecosystems and infrastructure
  - Duplication of efforts
  - Uncertainty and lack of predictability
  - Results: piecemeal mitigation



# Eco-Logical Overview

- 9-step process to identify ecological priorities in a region
- Includes tools for:
  - Cumulative effects and alternatives analysis
  - Regulatory assurances
  - Ecosystems crediting



# Implementing Eco-Logical – Financial Assistance

First Round Products February 2013	Proof of Concept Pilot	Lead Adopter Incentive	User Incentive
C06 – Eco-Logical	0	6	20

- No proof of concept pilots
  - 15 previous Eco-Logical grant projects and 4 SHRP2 pilots
- Up to 6 Lead Adopter Incentives \$200,000 - \$250,000 each
- Up to 20 User Incentives ~ \$25,000 each
- State DOTs and MPOs eligible

# Implementation Assistance

- [www.fhwa.dot.gov/goshrp2/](http://www.fhwa.dot.gov/goshrp2/)

The screenshot displays the website for the Strategic Highway Research Program (SHRP2) Implementation. The page features a blue header with the U.S. Department of Transportation Federal Highway Administration logo and navigation links. The main content area includes a large banner with the SHRP2 Solutions logo and the tagline "TOOLS FOR THE ROAD AHEAD". A prominent orange ribbon graphic on the left side of the banner reads "MORE COMING SOON". Below the logo, the text states "Effective Solutions to Meet Real Challenges" and describes the availability of research results for implementation. A "Get Involved" section provides a link to "Apply for Implementation Funding and Support". The footer contains logos for the U.S. Department of Transportation Federal Highway Administration, AASHTO (The Voice of Transportation), and the Transportation Research Board of the National Academies. The browser's address bar shows the URL "http://www.fhwa.dot.gov/goshrp2/" and the status bar indicates "Done, but with errors on page."

# Application

SHRP2 Solution | Implementing Eco-Logical | Federal Highway Administration - Windows Internet Explorer

http://www.fhwa.dot.gov/goshrp2/GetInvolved/ImplementationAssistance/C06/Implementing\_citeEcoLogicalcite/

File Edit View Favorites Tools Help

SHRP2 Solution | Implementing Eco-Logical | Fed...

### Contact Information

State

For Lead Adopter Incentive Only (\$200,000 - \$250,000 each)

*(The following questions are for Lead Adopter only; to apply for User Incentive, see application questions below.)*

<p>1. Briefly describe demonstrated agency leadership support for the regional ecosystem framework REF or Eco-Logical-like principles and participation in this program</p>	<p>2. Describe your existing REF, agreement or similar methodology, including a list of integrated plans or data criteria already vetted by interagency partner</p>
<p>3. Please describe mitigation and avoidance strategies including conservation areas and</p>	<p>4. Briefly describe existing partnerships and the partnership commitments to Eco-Logical</p>



# Application Do's and Don't's

<b>Do</b>	<b>Don't</b>
Make your application clear and concise	Apply if you do not represent a State DOT or MPO
Have your project relate to transportation	Rely on your attachments; narrative should be complete
Describe specifically what the funds will be spent on	Apply for geospatial tools that are similar to ongoing research
Describe the outcomes and deliverables you expect to achieve	Forget that implementation assistance is to advance Implementing Eco-Logical
Expect to share the results of your project	Be late; applications are due on March 22

# Implementation Timeline

- Solicitation closes: March 22
- First awards: Mid-April





# Questions?

Email: [goSHRP2@dot.gov](mailto:goSHRP2@dot.gov)

Application:

<http://www.fhwa.dot.gov/goshrp2/>

Eco-Logical:

[www.environment.fhwa.dot.gov/ecological/eco\\_entry.asp](http://www.environment.fhwa.dot.gov/ecological/eco_entry.asp)

Gary Jensen

Office of Human Environment

202-366-2048

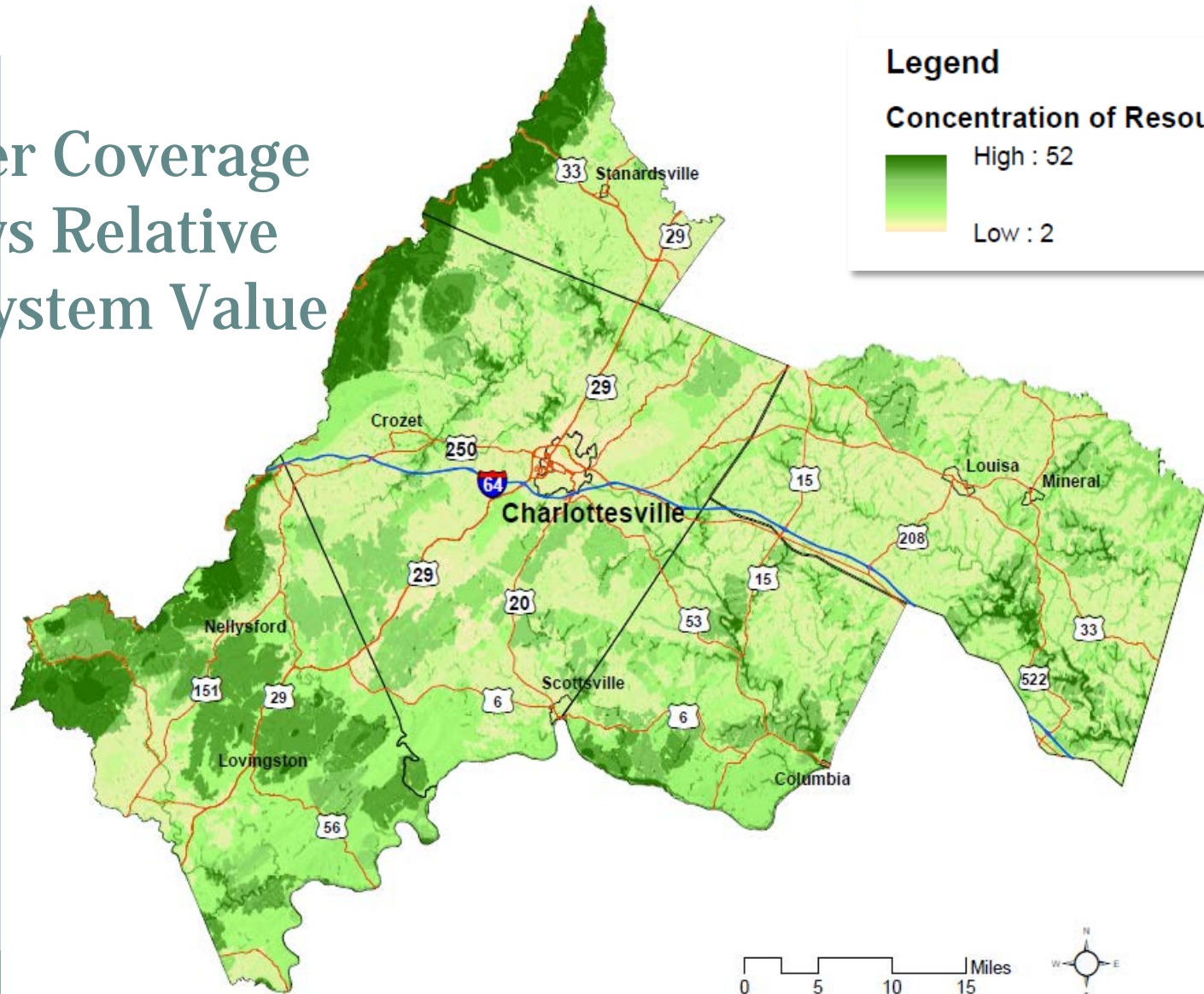
[gary.jensen@dot.gov](mailto:gary.jensen@dot.gov)



# Thomas Jefferson Planning District Commission

## Stephen Williams, Executive Director

Raster Coverage Shows Relative Ecosystem Value



# Project Purposes



**Use FHWA Eco-Logical Model to develop reproducible model for small MPOs/regional governments to:**

- Develop simple, transparent, collaborative approach to **analyzing ecosystem value**
- Integrate ecosystem value into **MPO transportation project prioritization**
- Use ecosystem value to identify **lowest ecosystem impact road alignment**
- Use Regional Ecosystem Framework and collaborative partnerships to **prioritize mitigation**

# Other Opportunities for Integrated Planning



- Integrate REF into local **Comprehensive Plans**
  - Let REF inform land use decisions, conservation planning
- Meeting **Chesapeake Bay Total Maximum Daily Load requirements**
  - Restoration focuses on impaired streams
  - Take credit for transportation mitigation projects at no cost to the locality
- **Nutrient Trading** – identify potential stormwater impact mitigation sites



# California Pilot Test of the Ecological Approaches to Environmental Protection Developed in Capacity Research Projects C06A and C06B

## State Route 37 Stewardship Study: Integrating Environment and Community in Transportation Planning

Presented by  
Katie Benouar  
Division of Transportation Planning  
Caltrans



# **The Team:**

**Road Ecology Center, University of California, Davis**  
Fraser Shilling, Project Lead

**Caltrans**

**Sonoma Ecology Center**

**Sonoma Land Trust**

**Napa County Resource Conservation District**

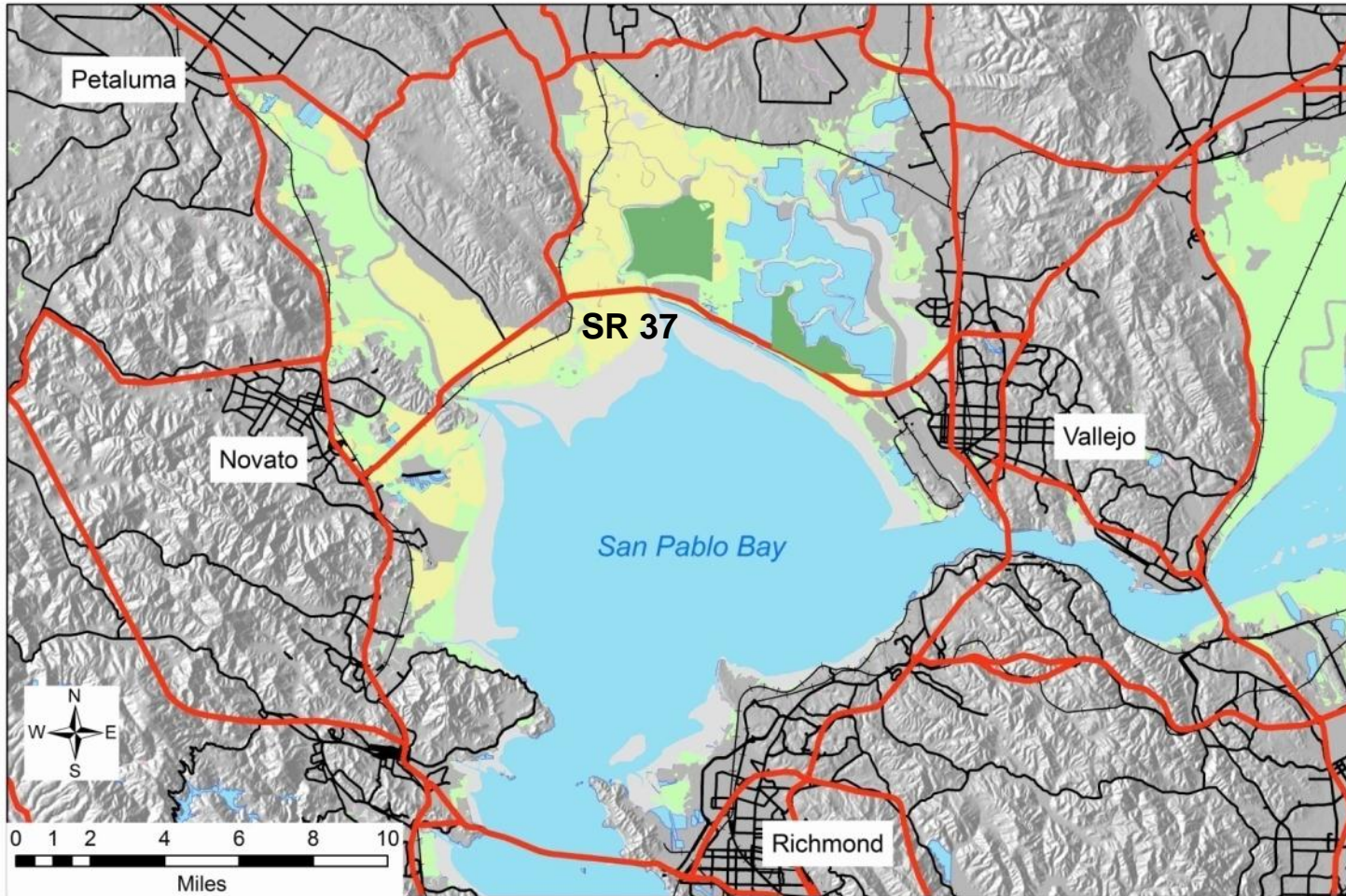
**Southern Sonoma County Resource Conservation District**

**Ecole Nationale des Travaux Publics de l'Etat, Lyon, France**

# **More Information:**

**<http://hwy37.ucdavis.edu>**





## Highway 37 Corridor

### North Bay Wetlands and Agriculture



Data for this map came from the California Spatial Information Library (CASIL), Bay Area Open Space Council, US Fish and Wildlife Service, Caltrans, and the Sonoma Ecology Center. The map was assembled by the Road Ecology Center.



# Greg Akers

West Virginia DOT - Division of Highways Program Planning and Administration  
Division



SHRP2 C21 Pilot Project:

**WVDOT and West Virginia University Research Collaborative – Testing the Eco-Logical Approach on Coalfields Expressway and King Coal Highway**