



PaveScan (RDM) Field Testing FDOT's Experience

Charles Holzschuher
State Pavement Performance Engineer
Florida Department of Transportation

October 24, 2017



U.S. Department of Transportation
Federal Highway Administration

AMERICAN ASSOCIATION
OF STATE HIGHWAY AND
TRANSPORTATION OFFICIALS

AASHIO

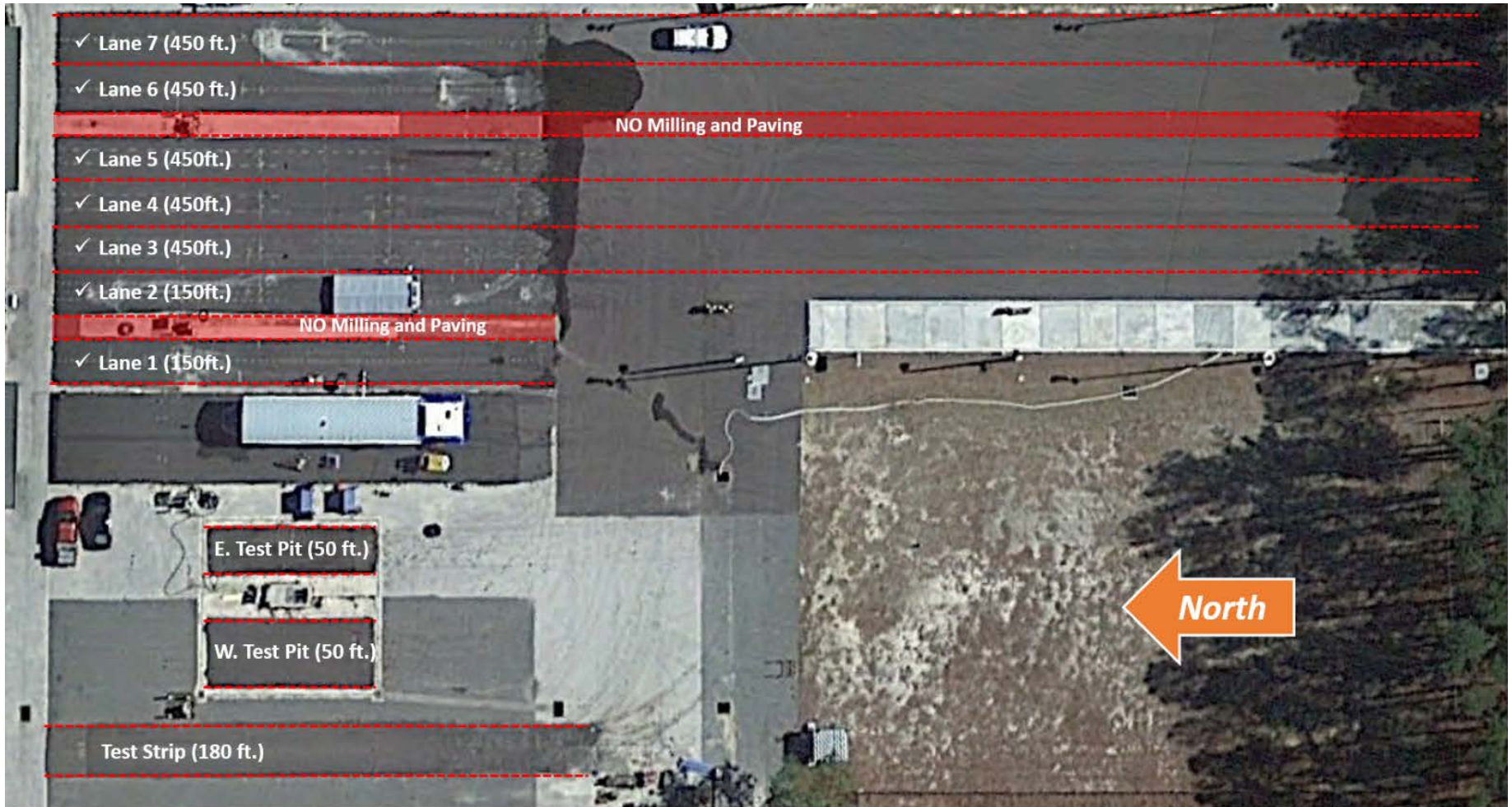
PaveScan Rolling Density Meter (RDM)

- PaveScan RDM device PaveScan RDM device used to determine relative density of asphaltic layer
- Quality assurance/quality control of new pavements
- Real-time dielectric measurements that correlate to density
- Allows for on-site continuous evaluation of relative compaction effectiveness



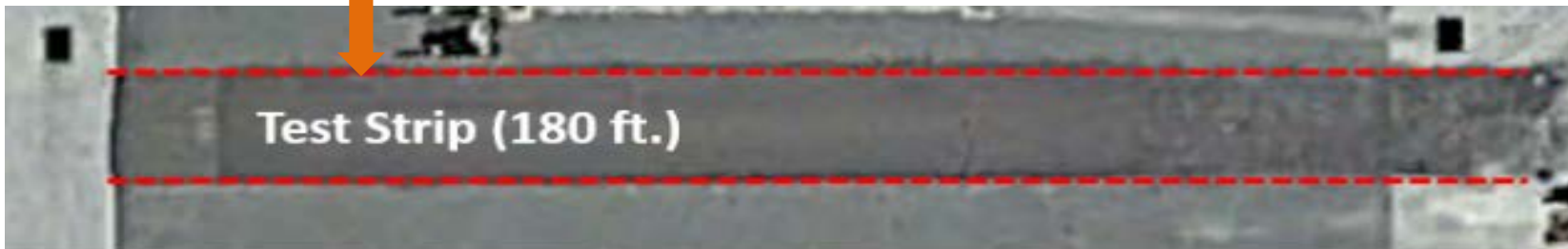
Project Test Locations

- SMO APT Lanes

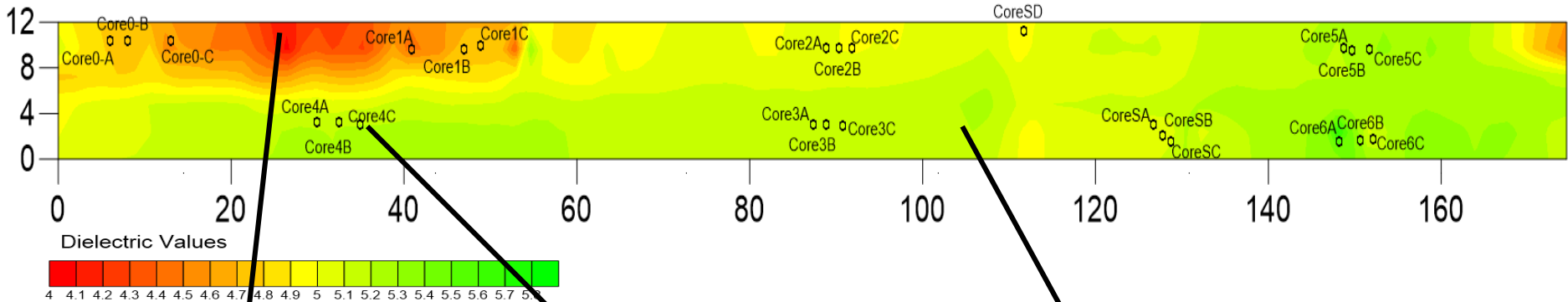
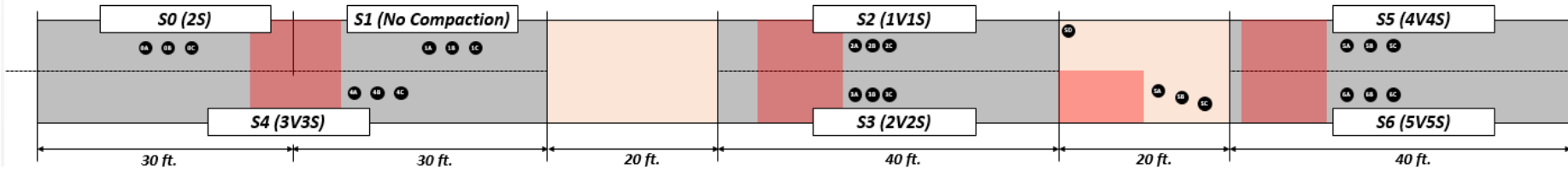


Project Test Locations

- SMO Test Strip

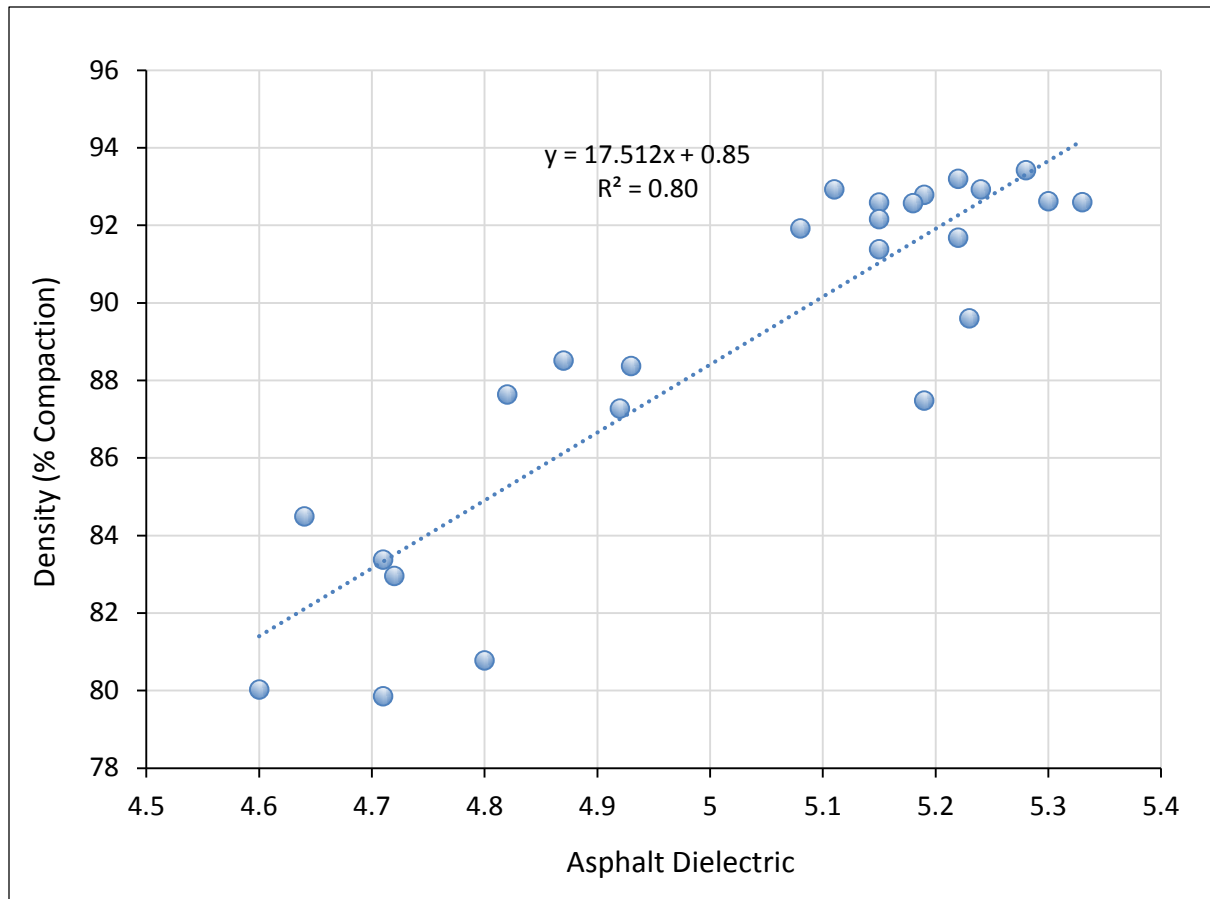


SMO Test Strip Results



SMO Test Strip Results

- Plot of % Density (Cores) and GPR Dielectric Values



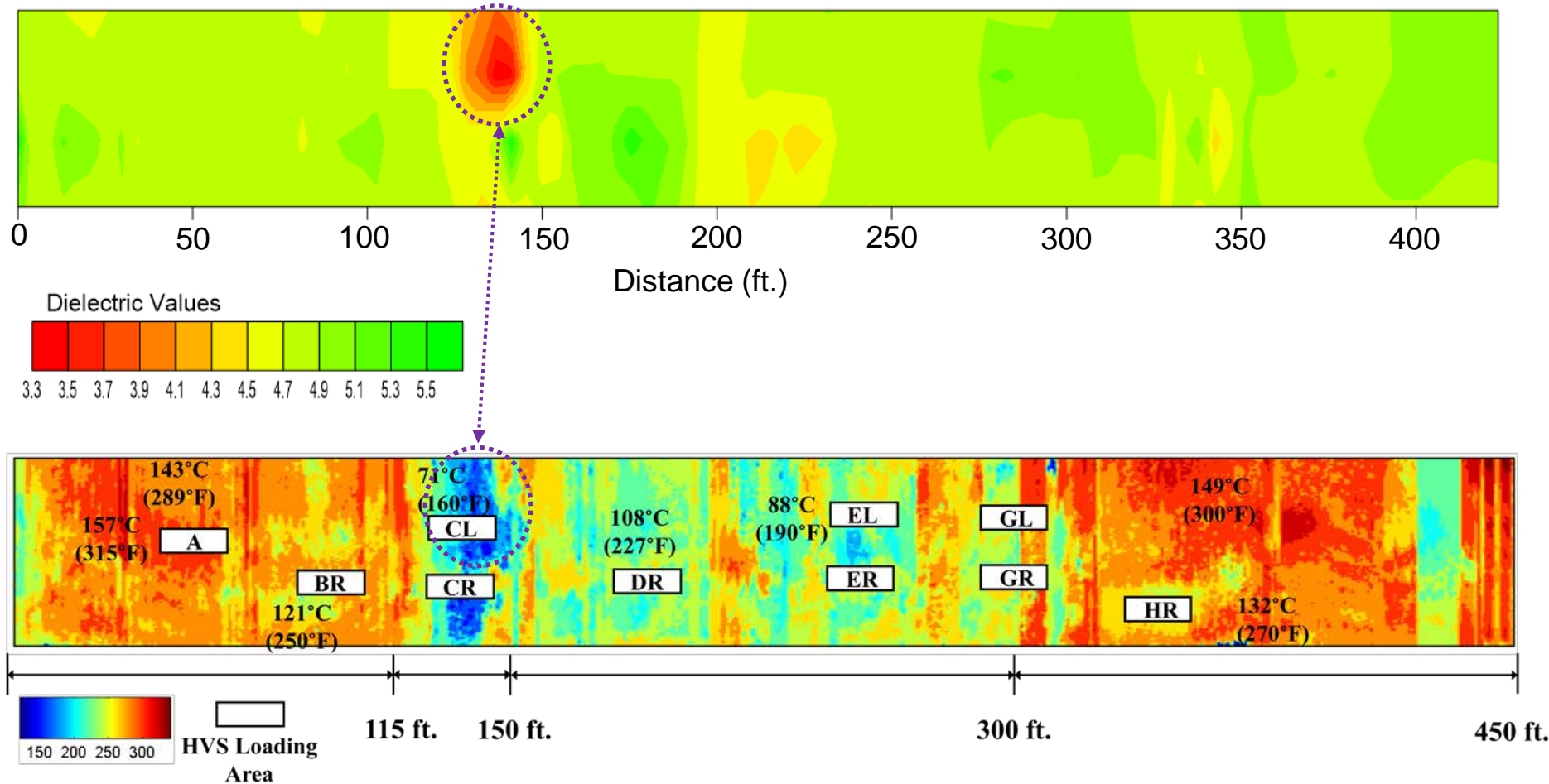
Project Test Locations

- SMO APT Lane 5



SMO APT Lane 5 Results

- GPR Dielectric Values and Thermal Imaging Profile



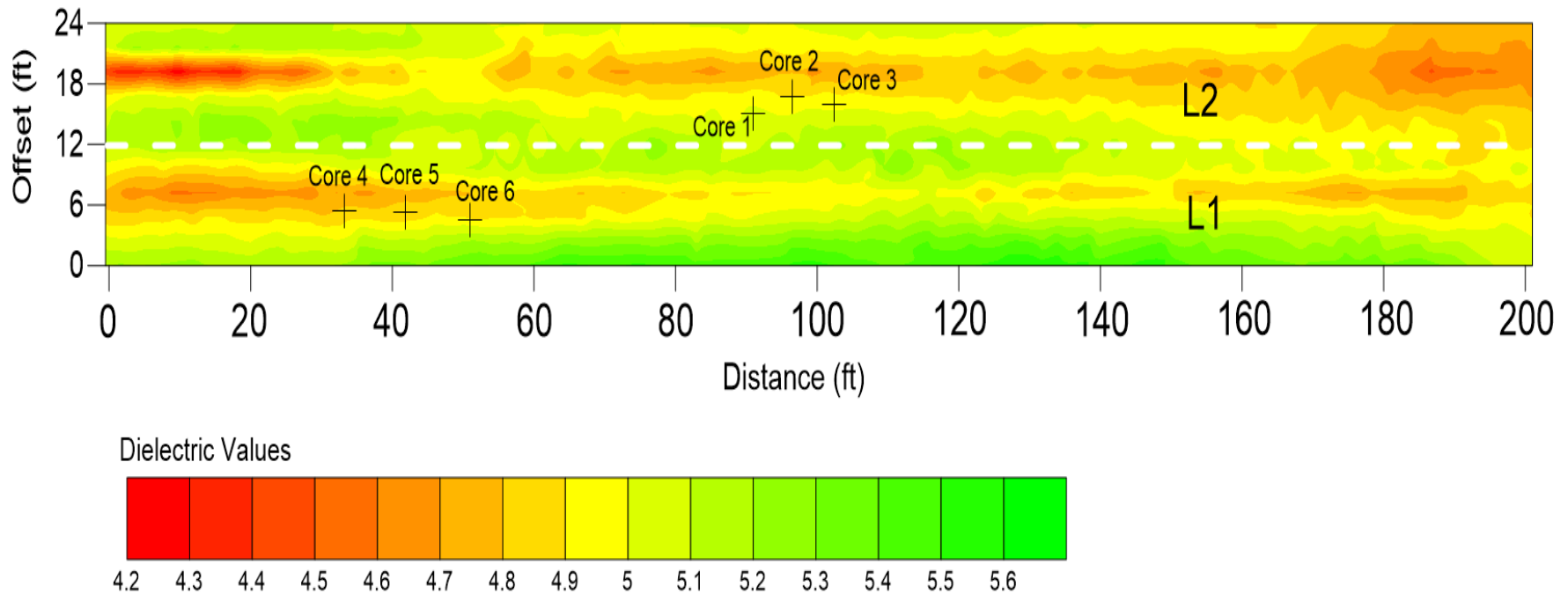
Project Test Locations – SR 23

- New Construction – Active Segregation
- 4-Lane Divided (2 NB Lanes; 2 SB Lanes)
- Asphalt Surfacing
- 12 ft. Lane Width
- 3 passes per lane



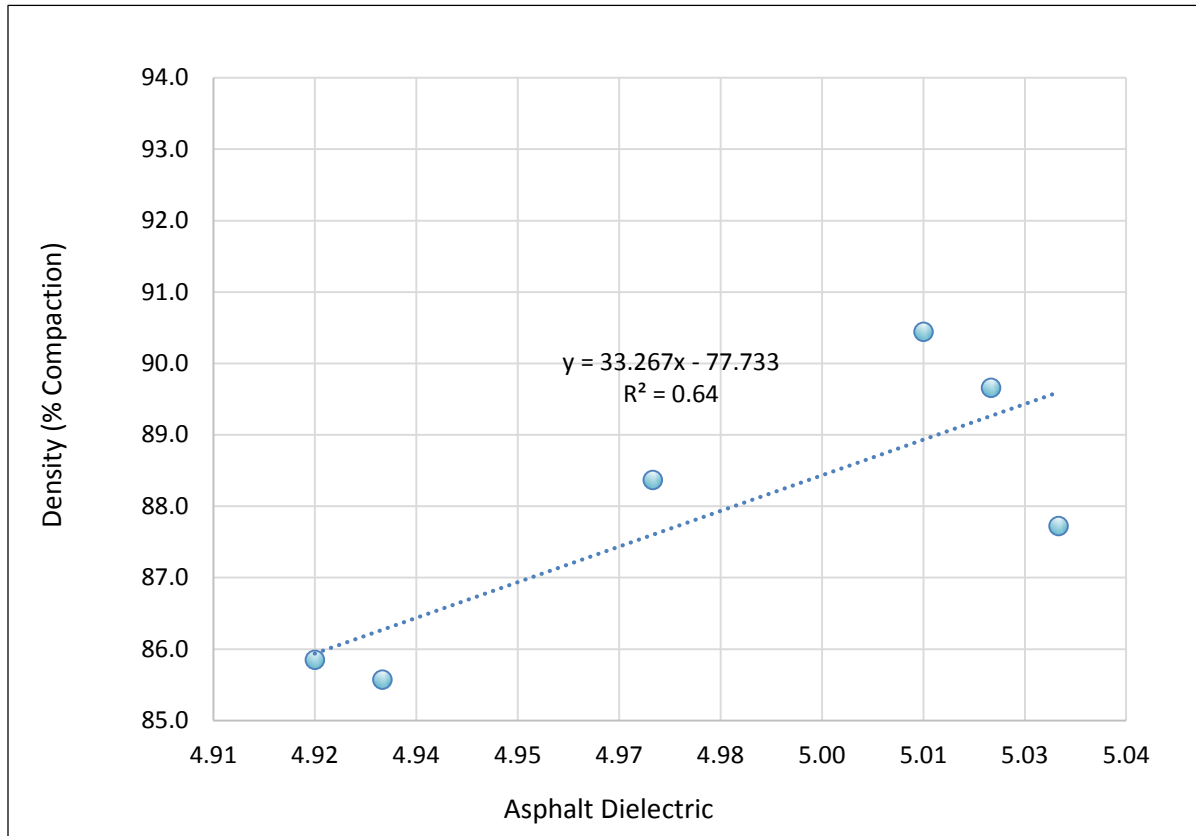
SR 23 Results

- Contour Plot of Dielectric Values (SB Lanes)



SR 23 Results

- Plot of % Density (Cores) and GPR Dielectric Values

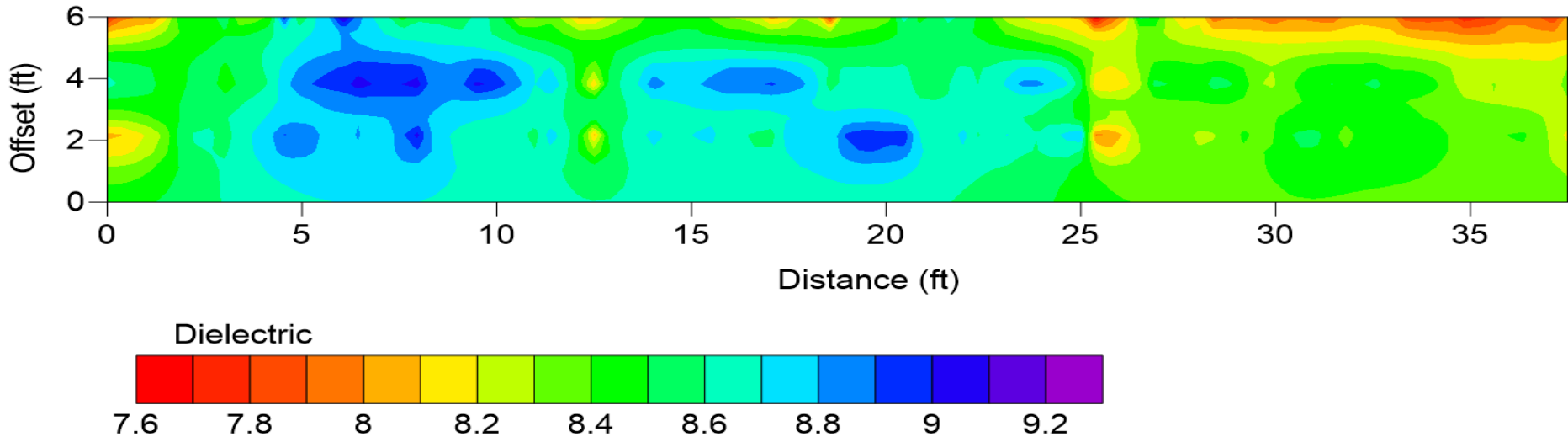


Other Uses/Needs

- Concrete Slab
 - Varying slab thickness (4 in., 5 in., and 6 in.)
 - FWD Calibration Slab



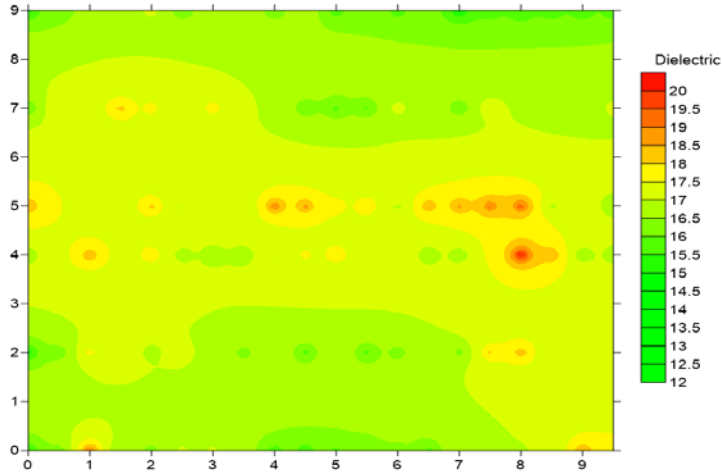
FWD Calibration Slab



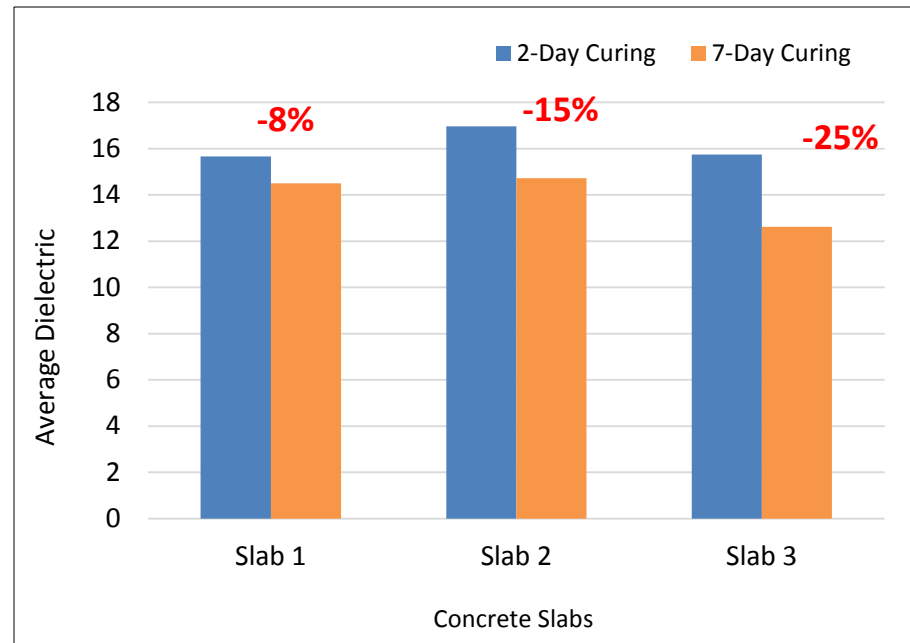
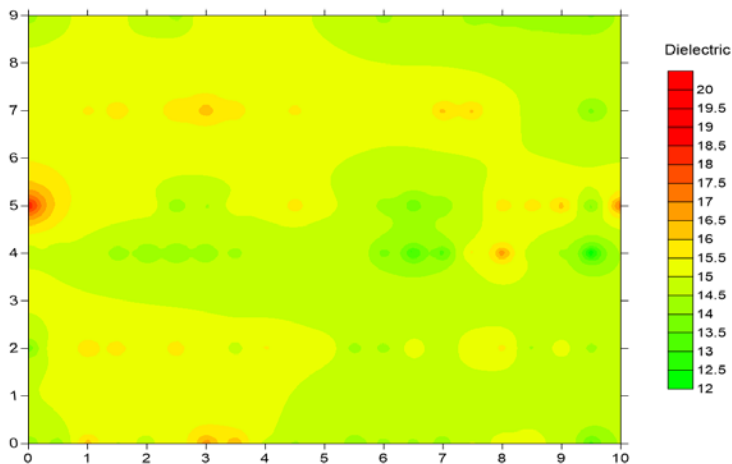
Other Uses/Needs

- Concrete Slab Curing Rate

2-day Curing



7-day Curing



QUESTIONS ???