



Eco-Logical Community of Practice

Innovative Mitigation Contracting & Financing

Kate Kurgan, American Association of State Highway
Transportation Officials

David Williams, Federal Highway Administration

Marisel Lopez-Cruz, Federal Highway Administration

Jody McCullough, Federal Highway Administration

Mike Pettegrew, Ohio Department of Transportation

Keith Greer, San Diego Association of Governments

October 5, 2016

[\(Learn more about Eco-Logical
at the FHWA website\)](#)



SHRP2 & Its Focus Areas

(Second Strategic Highway Research Program)



Safety: Fostering safer driving through analysis of driver, roadway and vehicle factors in crashes, near crashes, and ordinary driving.



Renewal: Rapid maintenance and repair of the deteriorating infrastructure using already-available resources, innovations, and technologies.



Capacity: Planning and designing a highway system that offers minimum disruption and meets the environmental, and economic needs of the community.



Reliability: Reducing congestion and creating more predictable travel times through better operations.

Eco-Logical: Community of Practice

Purpose:

- To continue the exchange of information after SHRP2 activities have concluded.

Goals :

- To create a self-sustaining network of practitioners to share knowledge, best practices, ideas, and facilitate technical assistance amongst members.

Implementing Eco-Logical

- Landscape-scale approach to transportation project development.
- Transportation agencies collaborate during the planning process.
- Lead to agreed-upon mitigation strategies and timely permit decisions.
- Linking Planning and Environment
- Programmatic Mitigation Plans



AASHTO & FHWA Contact Information

Kate Kurgan, AASHTO

kkurgan@ashto.org

202-624-3635

David Williams, FHWA

david.Williams@dot.gov

202-366-4074

Mike Ruth, FHWA

Mike.ruth@dot.gov

202-366-9509

FHWA | PEL

Planning & Environment Linkages



Overview

- **Planning and Environmental Linkages (PEL)**
- **Programmatic Mitigation Plans**
- **Highlights of MAP-21 and FAST Act**

Planning & Environment Linkages (PEL)

PEL represents a collaborative and integrated approach to transportation decision-making that:

- 1. Considers environmental, community, and economic goals early in the transportation planning process.**
- 2. Uses the information, analysis, and products developed during planning to inform the environmental review process.**
- 3. Helps states and MPOs save time and money in the environmental review and permitting phases of transportation projects.**

Programmatic Mitigation Plans in PEL

- **States and MPOs may develop programmatic mitigation plans as part of the statewide and the metropolitan transportation planning processes.**
(23 U.S.C. 169 as amended by MAP-21 and FAST Act)
("Final rule" language is in 23 C.F.R. 450.214 and 450.320)
- **States and MPOs anticipate the potential environmental impacts of future transportation projects (such as those listed in their long-range plans) and create, or use existing, programmatic mitigation plans to help mitigate those future impacts.**
- **Programmatic mitigation plans depend on close coordination between State DOTs/MPOs and relevant Resource Agencies**

Programmatic Mitigation Plans - Scope

- **The programmatic mitigation plan may include:**
 - **An assessment of the existing condition, historic and recent trends and/or any potential threats to those resources.**
 - **Identification of economic, social, and natural and human environmental resources, including:**
 - **wetlands**
 - **streams**
 - **rivers**
 - **stormwater**
 - **parklands**
 - **cultural resources**
 - **historic resources**
 - **farmlands**
 - **archeological resources**
 - **threatened or endangered species**
 - **critical habitat**

Programmatic Mitigation Plans - Flexibility

- **Integration into/from other plans**
 - **Programmatic mitigation plan can be integrated with other resource plans including, but not limited to:**
 - watershed plans
 - ecosystem plans
 - species recovery plans
 - growth management plans
 - state wildlife plans
 - climate change action plans
 - land use plans
 - **States and MPOs can adopt programmatic mitigation plans developed under another authority**
 - **Includes the use of mitigation and conservation banks**

Programmatic Mitigation Plans - Funding

- **State Planning and Research & Metropolitan Planning Funds**
 - **Eligibility will be evaluated on a case-by-case basis**
(Contact your FHWA Division Office or FTA Regional Office.)
 - **In general, transportation planning activities undertaken as part of the planning process prior to the initiation of NEPA are eligible**
 - **NEPA development: in consultation with the relevant agency, the project sponsor is encouraged to consider adoption or incorporation by reference of the relevant components to advance environmental activities for a project eligible for federal funds**

Contacts



- **Marisel Lopez-Cruz, FHWA**
- Marisel.lopez-cruz@dot.gov
- 202-493-0356

- **Jody McCullough, FHWA**
- Jody.Mccullough@dot.gov
- 202-366-5001



Eco-Logical CoP Webinar – Innovative Mitigation Contracting/Financing – October 5, 2016

ODOT Full Delivery Process for Natural Resource Mitigation



Mike Pettegrew
ODOT Office of
Environmental Services
Ecological Program
Manager

ODOT Full Delivery Process for Natural Resource Mitigation

- Why did the process develop?
 - Reduction in staffing, reorganization, etc.
 - Elimination of dedicated real estate staff for mitigation
 - Mitigation regulations became more stringent
 - Difficulties with incorporating mitigation with regular construction contracts
 - Need to maintain competitive pricing
 - Need for programmatic/landscape scale mitigation in certain circumstances

ODOT Full Delivery Process for Natural Resource Mitigation

- How is the full delivery model different than previous methods for ODOT to accomplish mitigation?
 - “Old ways”
 - In house
 - Performed with dedicated real estate mitigation staff in conjunction with environmental staff and district staff
 - Mitigation sites requiring construction were incorporated into the transportation project contract
 - Utilizing consultants to assist or completely conduct work through a “professional services” contract
 - Can only do professional services and not construction
 - Cannot include price as a consideration in selection
 - Required controlling board approval
 - Typically 2 year contracts, limits on spending authority
 - Banks
 - Wetland only, limited coverage
 - ILF options recent to Ohio
 - Purchases require controlling board approval

ODOT Full Delivery Process for Natural Resource Mitigation

- New Full Delivery Natural Resource Mitigation Process
 - Selection is competitively bid, but controlling board approval not required
 - Can consider all services related to mitigation (e.g. environmental, real estate acquisition, construction, long term management, etc.)
 - Contract length can be multiple years
 - No predefined limits on spending authority
 - Selection criteria can be customized and pricing can be considered as a selection criteria
 - Cost proposals and invoices are simplified
 - Contracts are written where no properties are purchased in ODOT's name

ODOT Full Delivery Process for Natural Resource Mitigation

□ New Full Delivery Natural Resource Mitigation Process

□ Advantages of Full Delivery Process

- Allows us to select highly qualified mitigation teams that have extensive mitigation experience. We don't get stuck with a contractor that has no mitigation experience and is not focused on the mitigation project.
- Consideration of pricing results in interested parties seeking to be more efficient. This saves the department money and results in additional mitigation opportunities.
- Since properties are not purchased in ODOT's name, this results in less future land management headaches
- Maintains a competitive pricing between permittee responsible mitigation vs banks/ILFs
- In general, the process is very flexible and efficient, thus resulting in a good tool to deal with decreased staffing/resources, helps manage complexity of mitigation regulations, etc.

ODOT Full Delivery Process for Natural Resource Mitigation

- New Full Delivery Natural Resource Mitigation Process
 - ▣ Application of Full Delivery Mitigation Contracts
 - If there is a large project requiring extensive amounts of mitigation, ODOT creates a separate RFP/selection/agreement specific to the particular project and its mitigation needs
 - 2 Statewide Full Delivery Mitigation Contracts in place (5 year contracts) to cover smaller mitigation projects, non-compliance/violations, adaptive management/maintenance on older mitigation sites
 - Can also utilize for statewide mitigation efforts
 - Statewide bat conservation efforts for ODOT's PBO for federally listed bat species
 - Strategic stream and wetland mitigation regional or district approaches



Bat Mini-Condo – TNC
Cornuelle Property

ODOT Full Delivery Process for Natural Resource Mitigation

- New Full Delivery Natural Resource Mitigation Process
 - General Process for Full Delivery contracting
 - Request for proposal issued to interested parties
 - Evaluation criteria is listed in RFP
 - Project approach, project manager, experience/organization structure, cost approach, overall value to ODOT
 - These can be changed as needed and percentages can be adjusted
 - Evaluation/selection by committee
 - Selected mitigation team notified
 - A formal contract is developed with formal cost proposal as applicable
 - Regular status meetings
 - ODOT provides oversight and project management/coordination as necessary

ODOT Full Delivery Process for Natural Resource Mitigation

- How is the Full Delivery process working for ODOT?
 - ▣ So far so good, but experience is limited
 - Since we have been through the process a few times we are getting a better feel/understanding and constantly improving
 - ▣ As mentioned earlier
 - Competitive pricing, flexible, accomplishes mitigation with less ODOT staff/involvement, allows us to achieve additional mitigation/conservation, more qualified mitigation teams
 - ▣ Only downside is the length of time to get a contract up and running
 - First few projects have been 8-12 months to get started
 - Statewide contracts will handle the smaller work so this helps this situation out

ODOT Full Delivery Process for Natural Resource Mitigation

- Practical tips?
 - Each state is likely unique to their own state rules/policies/procedures
 - Talk to your contracting offices and see what options exist to implement a full delivery mitigation process
 - Keep in touch with the mitigation community and exchange ideas/information



Brandenbark – Candy Run East

ODOT Full Delivery Process for Natural Resource Mitigation

Mike Pettegrew, ODOT

Mike.Pettegrew@dot.ohio.gov

614-466-7102



ECO-LOGICAL WEBINAR: INNOVATIVE MITIGATION CONTRACTING & FINANCING

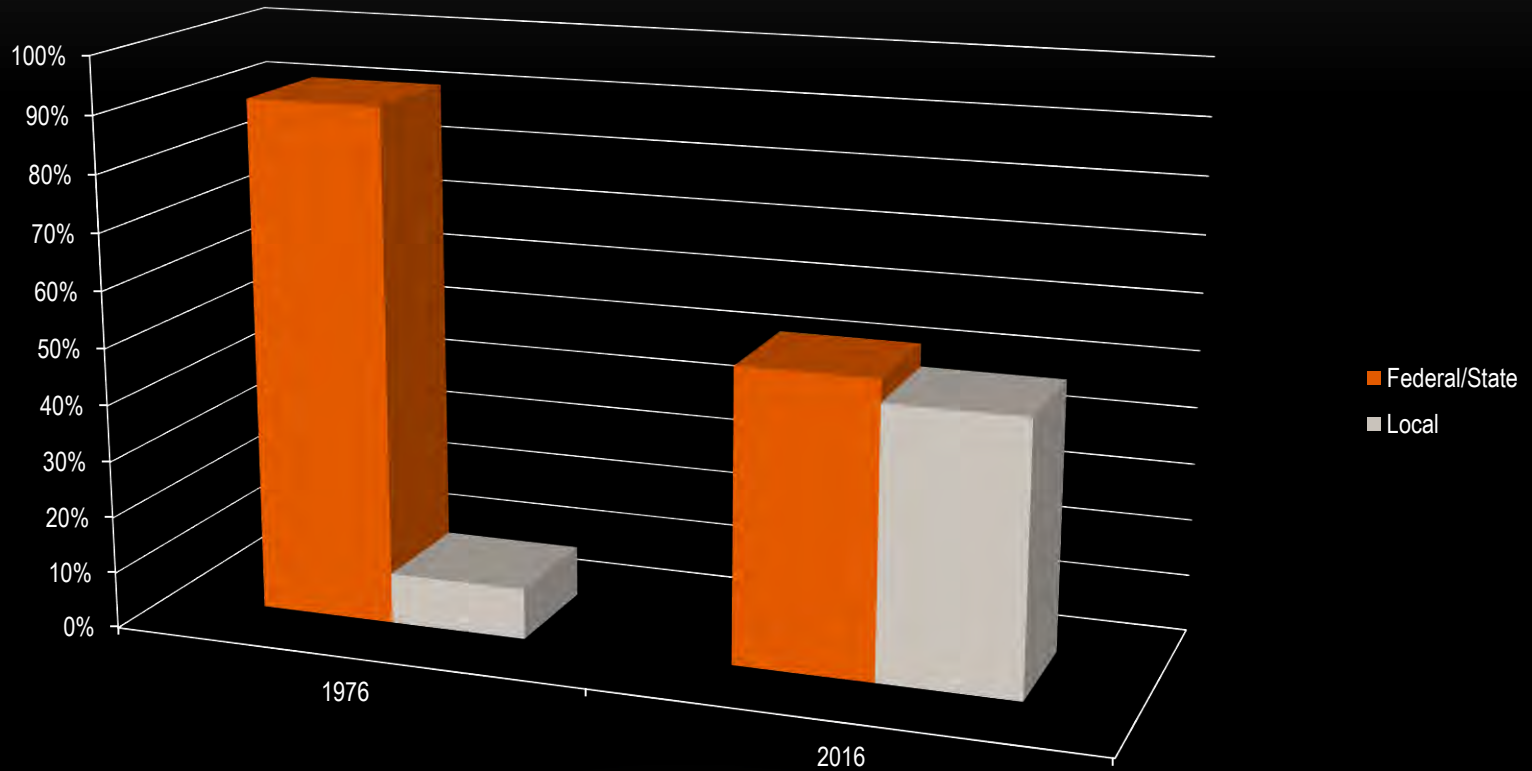
Implementing Advance Mitigation



WHAT IS SANDAG?

- MPO (original established in 1966). SANDAG is made up of the 18 cities and county government in San Diego and serves as the forum for regional decision-making.
- RTA (1971). State designates SANDAG as the Regional Transportation Agency
- State law (2002) consolidates financial programming, project design and development under SANDAG for transit development.
- *TransNet* (1/2 cent local sale tax) to promote highways, transit, local roads and bicycles. First adopted in 1987 and reauthorized in 2004 by voters
- **Environmental Mitigation Program** (2004) established for the advanced mitigation of regional transportation projects and local streets and roads.
 - \$850 million dollars of \$14 billion dollar *TransNet* program (\$2002)

CHANGE IN TRANSPORTATION FUNDING: SAN DIEGO COUNTY 1976-2016



BACKGROUND

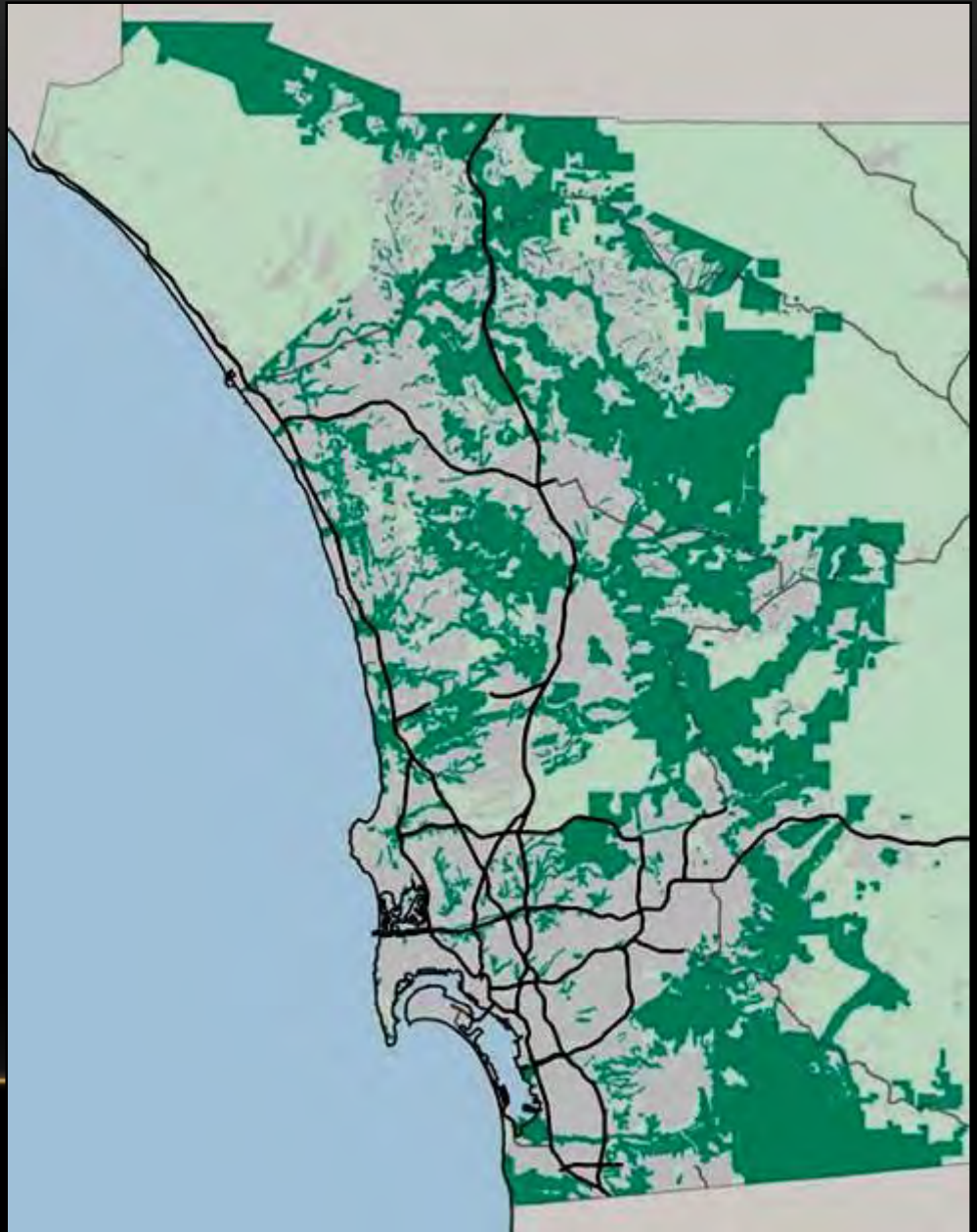
- San Diego County's endangered species "problem"
- Perception that environmental mitigation is delaying infrastructure development
- Securing biological mitigation sites case-by-case basis – costly and ineffective
- San Diego long history of habitat conservation planning



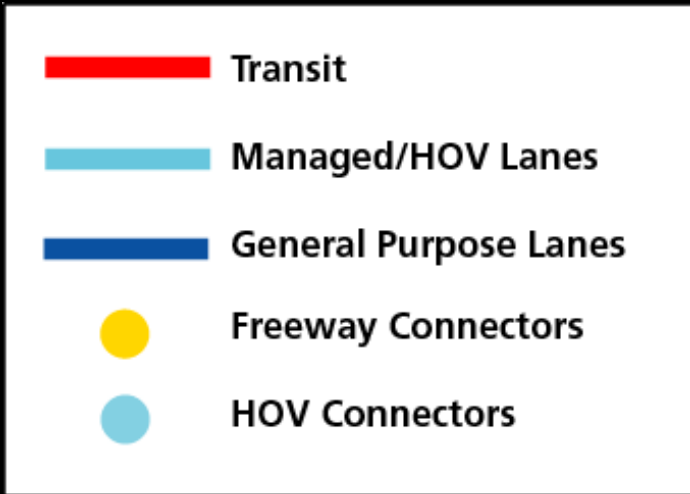
NATURAL COMMUNITIES CONSERVATION PLANNING ACT (1991)



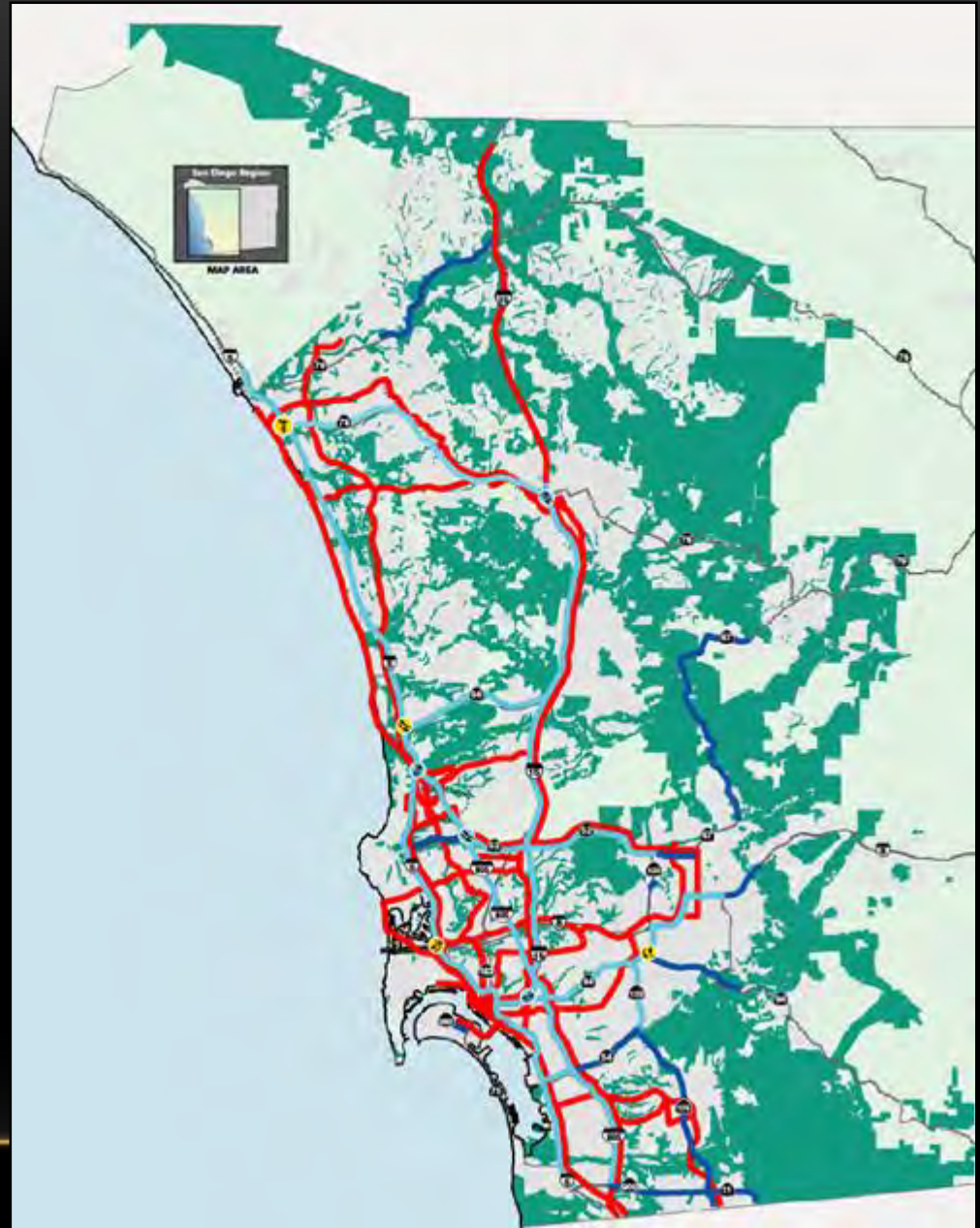
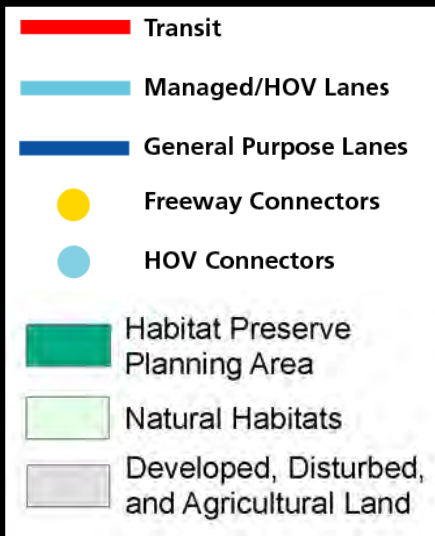
REGIONAL HABITAT PRESERVE PLANNING AREA



ADOPTED REGIONAL TRANSPORTATION NETWORK



REGIONAL HABITAT PRESERVE PLANNING AREA WITH MOBILITY NETWORK





**Large scale acquisition
and management**



**Reduced cost
Accelerated delivery
Implement habitat plans
↓ Listing of species**

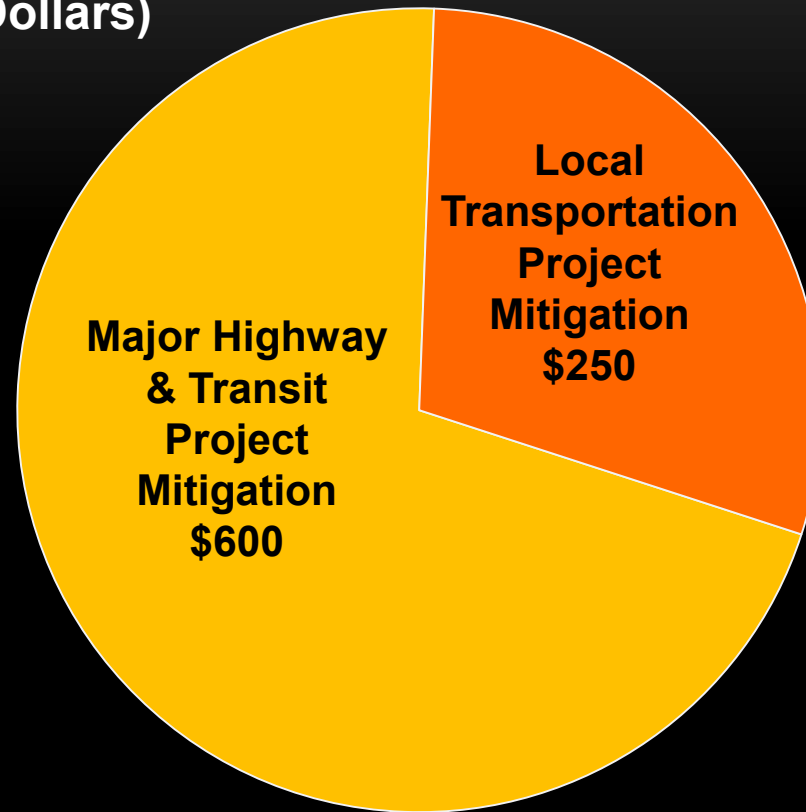
TransNet Extension EMP

“The intent is to establish a program to provide for large-scale acquisition and management of critical habitat areas and to create a reliable approach for funding required mitigation for future transportation improvements thereby reducing future costs and accelerating project delivery. This approach would be implemented by obtaining coverage for transportation projects through existing and proposed multiple species conservation plans. (Section D)”

Environmental Mitigation Program Costs

(In Millions, 2002 Dollars)

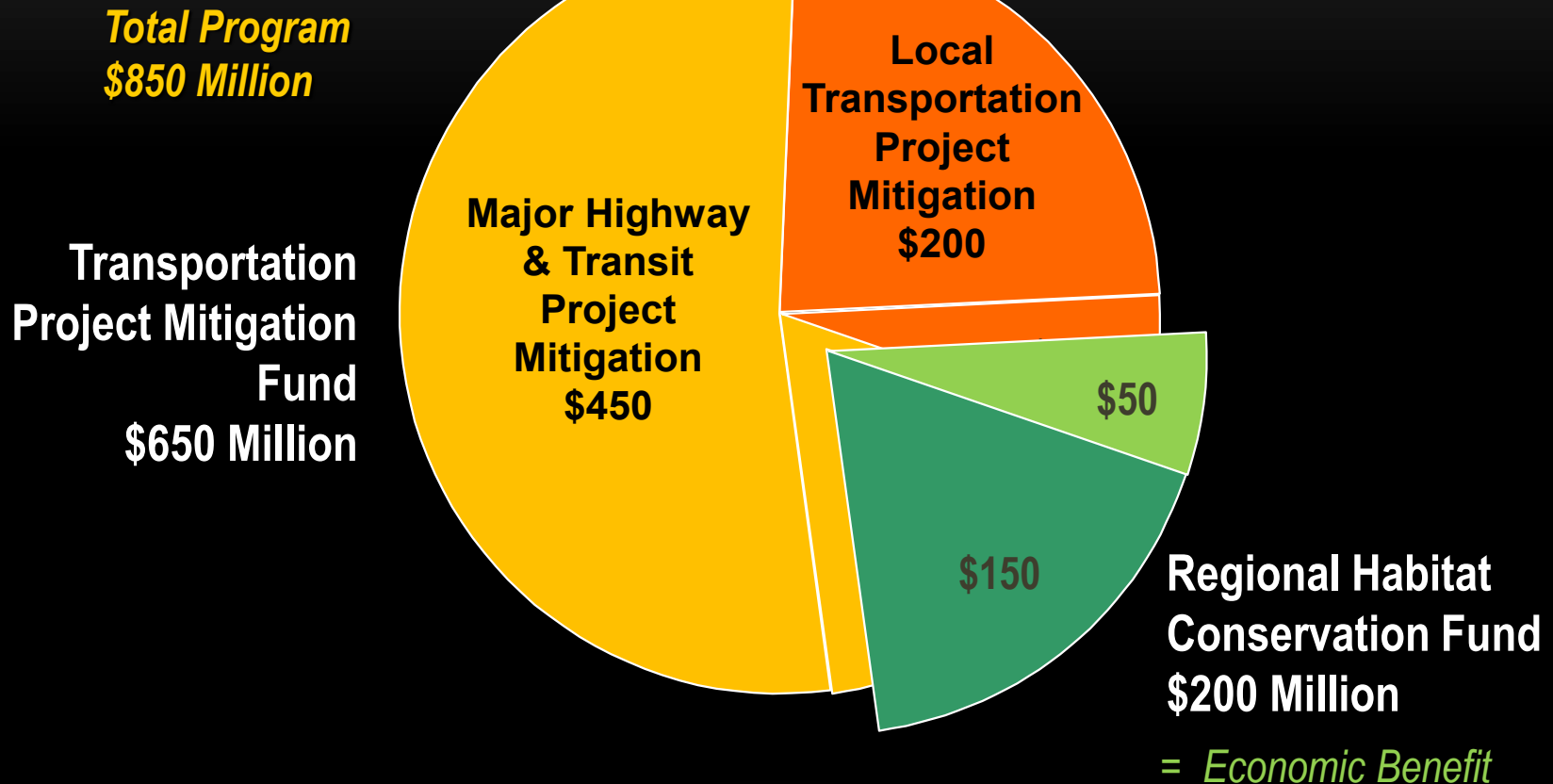
Total Program
\$850 Million



6.2% of TransNet Annual Net Revenue


Environmental Mitigation Program Costs

(In Millions, 2002 Dollars)



Plus up to \$30 million in financing costs for advanced habitat acquisition and \$82 million in intra-program borrowing

EARLY MITIGATION FOR NET ENVIRONMENTAL BENEFIT
 Meaningful Off-Setting Measures for Unavoidable Impacts



Requested by: American Association of State Highway and Transportation Officials (AASHTO) Standing Committee on the Environment

Prepared by: Marie Venner, Venner Consult
 In association with Parsons Brinckerhoff

September 2005

The information contained in this report was prepared as part of NCHRP National Cooperative Highway Research Program, Transportation

2005



An Ecosystem Approach to Developing Infrastructure Projects

Eco-Logic

2006

DRAFT STATEWIDE FRAMEWORK FOR Regional Advance Mitigation Planning IN CALIFORNIA

Prepared for:
 California Department of Water Resources
 FloodSAFE Environmental Stewardship and Statewide Resources Office
 P.O. Box 942836
 Sacramento, CA 94236-0001
 Contact: Natasha Nelson
 (916) 653-6053

Prepared by:
 Regional Advance Mitigation Planning Workgroup
 California Department of Water Resources
 California Department of Transportation
 California Department of Fish and Game
 California State Parks
 California Wildlife Conservation Board
 U.S. Environmental Protection Agency
 U.S. Fish and Wildlife Service
 U.S. Army Corps of Engineers
 National Oceanic and Atmospheric Administration Fisheries Service
 The Nature Conservancy
 University of California, Davis
 Resources Legacy Fund

Technical Assistance Provided by:
 AECOM
 2001 L Street, Suite 400
 Sacramento, CA 95811
 Contact: Vance Howard
 (916) 41-6500

April 2011

P-09-10228-22

2012

Statewide Advance Mitigation Funding and Financial Strategies
 The Business Case for Advance Mitigation in California
 Task 3 Report:



November 20, 2014

Statewide Advance Mitigation Funding and Financial Strategies (SAMFFS)
 Project for the California Department of Transportation

Prepared by:
 Dr. Gian-Claudia Sciana, AICP
 Elizabeth Strykowski
 Jacquelyn Bjorkman
 Dr. Jim Thorne
 Melanie Schlotterbeck

Principal Investigator:
 Dr. Gian-Claudia Sciana, AICP

ITS UC DAVIS
 INSTITUTE OF TRANSPORTATION STUDIES

Information Center for the Environment

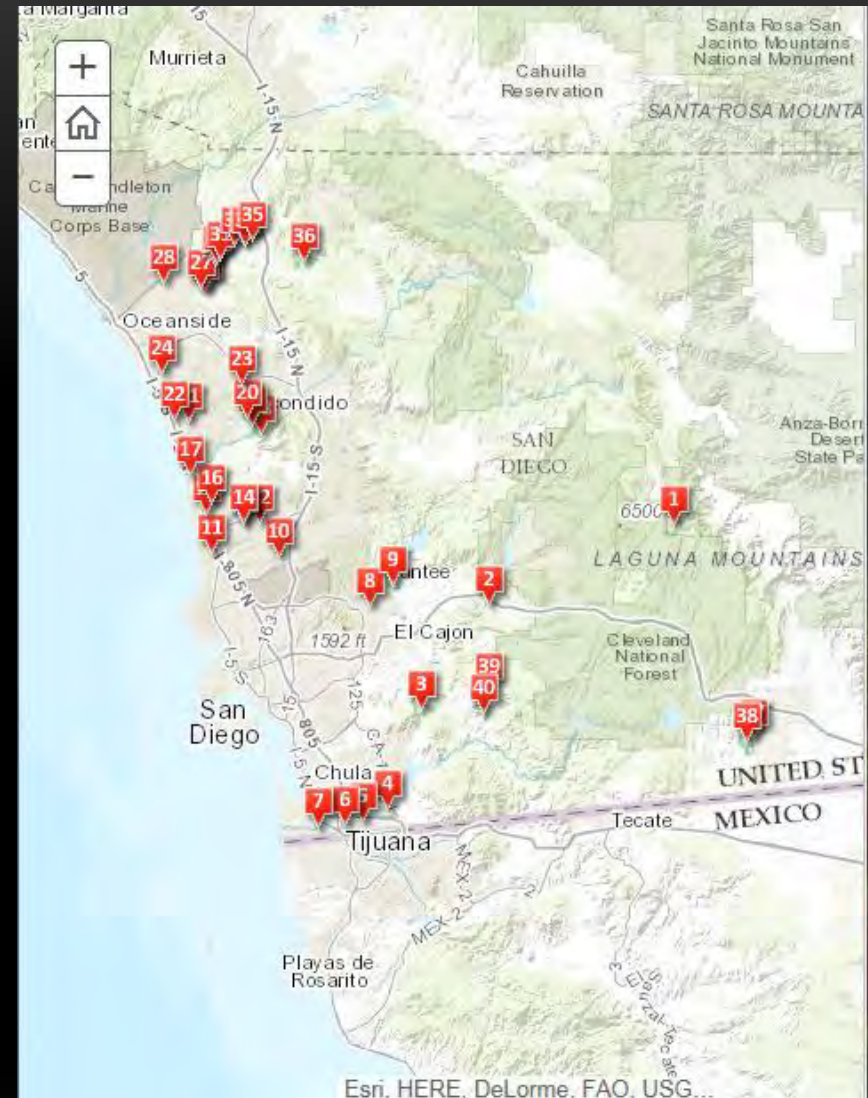
2014

Promoting Advance Mitigation

STATUS OF EMP 2016

- 39 properties
- 8,669 acres
- Restoration 400 acres
- \$127 million *TransNet* funds
- \$30.4 million matching funds
- More Information?

Keepsandiegomoving.com



State Route 76



Rail Double Tracking



Tijuana River Valley Restoration



CONTRACTING OPTIONS FOR MITIGATION

- RFP/IFB **X** (has not been utilized with advance mitigation)
- ON-CALL ENVIRONMENTAL SERVICES
 - Job Order Contracting (JOC)
- CALTRANS STAFF (Master Agreement)
 - Division of Procurement and Contracts (DPAC)
- CONSTRUCTION MANAGER / GENERAL CONTRACTOR (CM/GC)



CONSTRUCTION MANAGER / GENERAL CONTRACTOR (CM/GC)



Contact Information

Keith Greer, SANDAG

keith.greer@sandag.org

619-699-7390



Questions?



Please remember to type in
your questions to the question
prompt.

Thank you for participating!

Contact Information

Kate Kurgan, AASHTO

kkurgan@aaashto.org

202-624-3635

Jody McCullough, FHWA

Jody.Mccullough@dot.gov

202-366-5001

David Williams, FHWA

david.Williams@dot.gov

202-366-4074

Mike Pettegrew, ODOT

Mike.Pettegrew@dot.ohio.gov

614-466-7102

Marisel Lopez-Cruz, FHWA

Marisel.lopez-cruz@dot.gov

202-493-0356

Keith Greer, SANDAG

keith.greer@sandag.org

619-699-7390