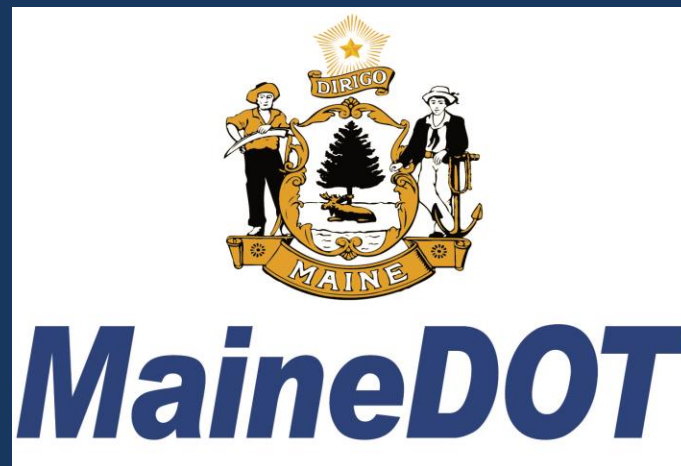


# Implementing Eco-Logical in a World of Schedules and Salmon

Judy Gates, Environmental Office



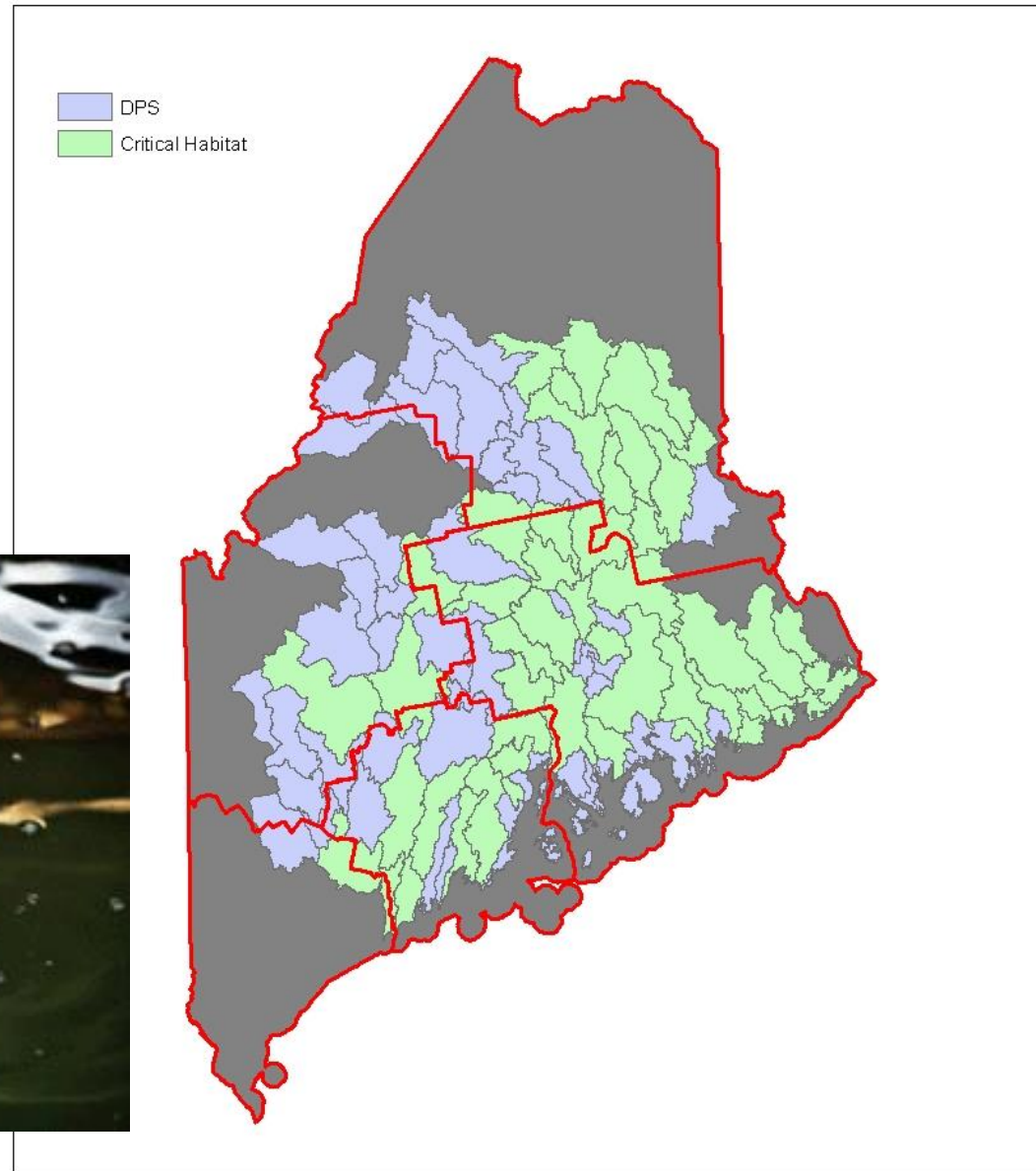
Integrity ~ Competence ~ Service



# Atlantic salmon

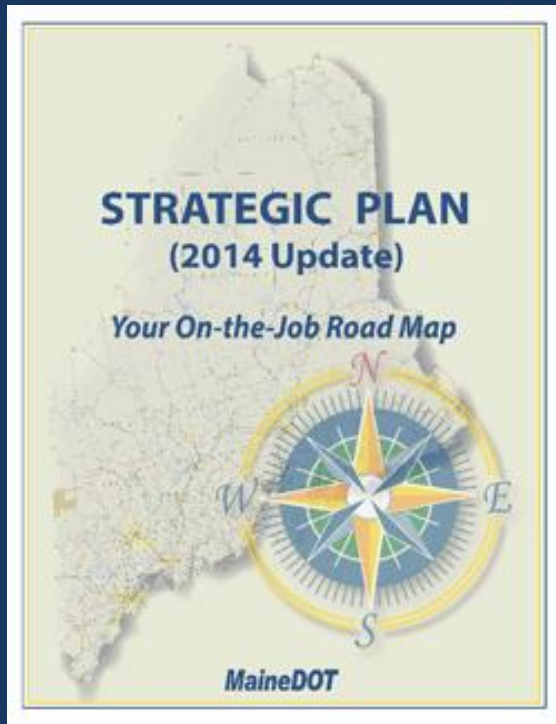


## Atlantic Salmon DPS and Critical Habitat



0 12.5 25 50 75 100 Miles

# The Facts...



- Schedule ( $\geq 85\%$  on time) & budget ( $\leq 20\%$  vs. award) are two of MaineDOT's "Capstone" performance measures.
- Approximately 25% of stream projects per work plan year (~50) require consultation for Atlantic salmon.
- Of those 50, about 10 require formal consultation.
- Section 7 is critical path on 100% of projects intersecting with Atlantic salmon.
- Expectations vary widely ; design & construction methods do not.
- ~98% of projects qualify for Categorical Exclusions
- Where salmon are an issue, 100% of projects have missed their original target date for completing consultation

# More Fun Facts...



- Time estimated for completion of a Biological Opinion assumes ONE person working full time on ONE project
- Restoration priorities are hard to come by
- “Nimble” is not in the regulations
- No take of adult Atlantic salmon allowed
- Document requirements are fluid: if it looks like a BA and talks like a BA, do BA timeframes apply?
- Our performance measures bounce

АНННННН!!!!



**SHRP2**



**STRATEGIC HIGHWAY  
RESEARCH PROGRAM**

An Ecosystem Approach  
to Developing  
Infrastructure Projects

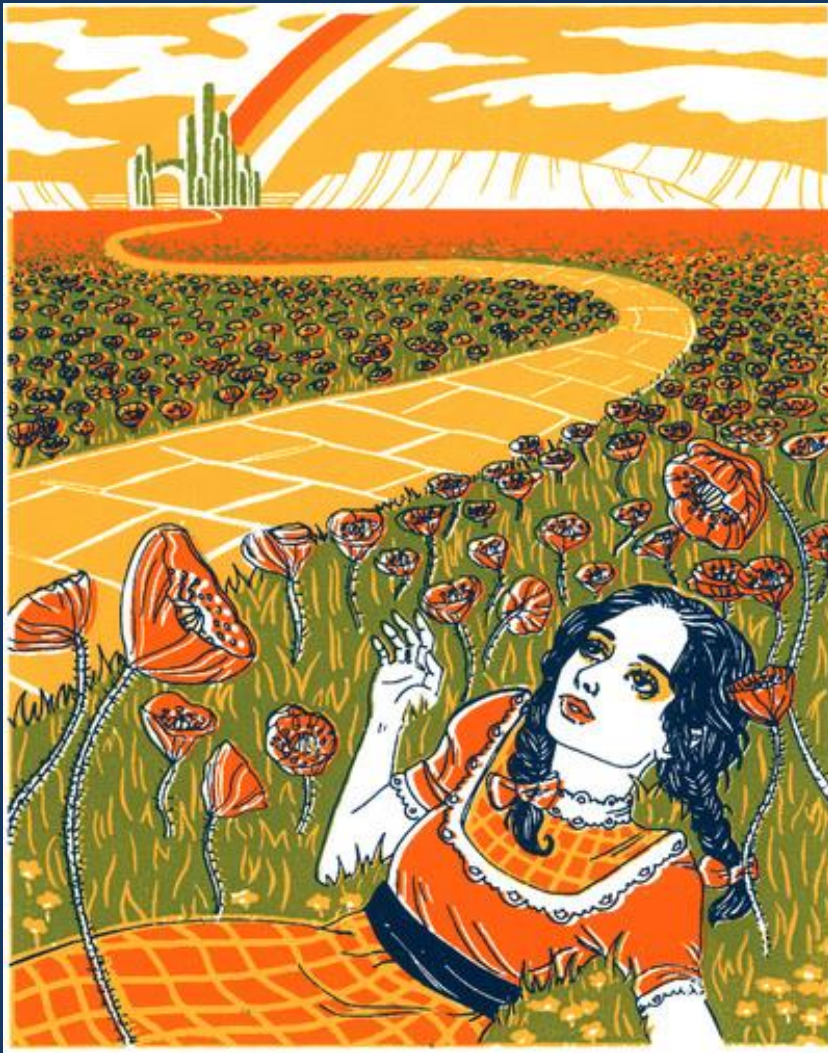
**Eco-Logical**



## **Implementing Ecological Funding Assistance Program**

**\$250,000**

**18 months**



By Julie Minamata





**Coming together is a beginning; keeping together is progress; working together is success.**

**Henry Ford**












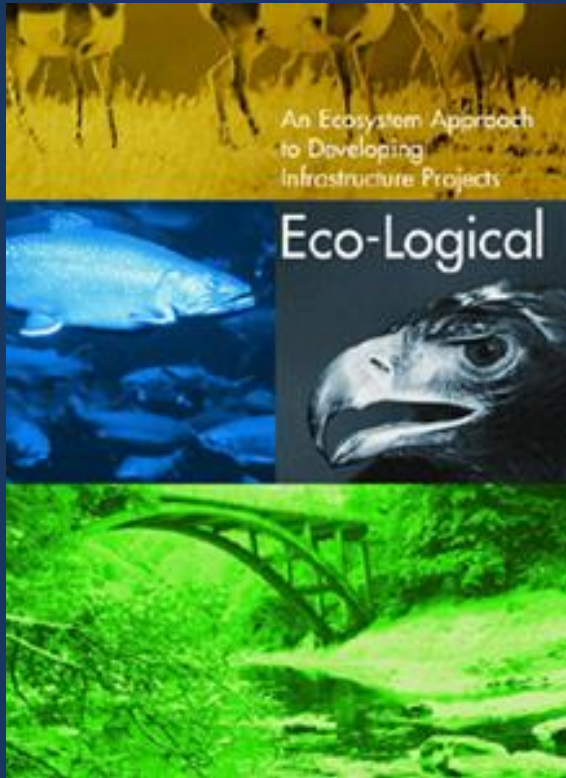
**If there is no struggle,  
there is no progress.**

**Frederick Douglass**

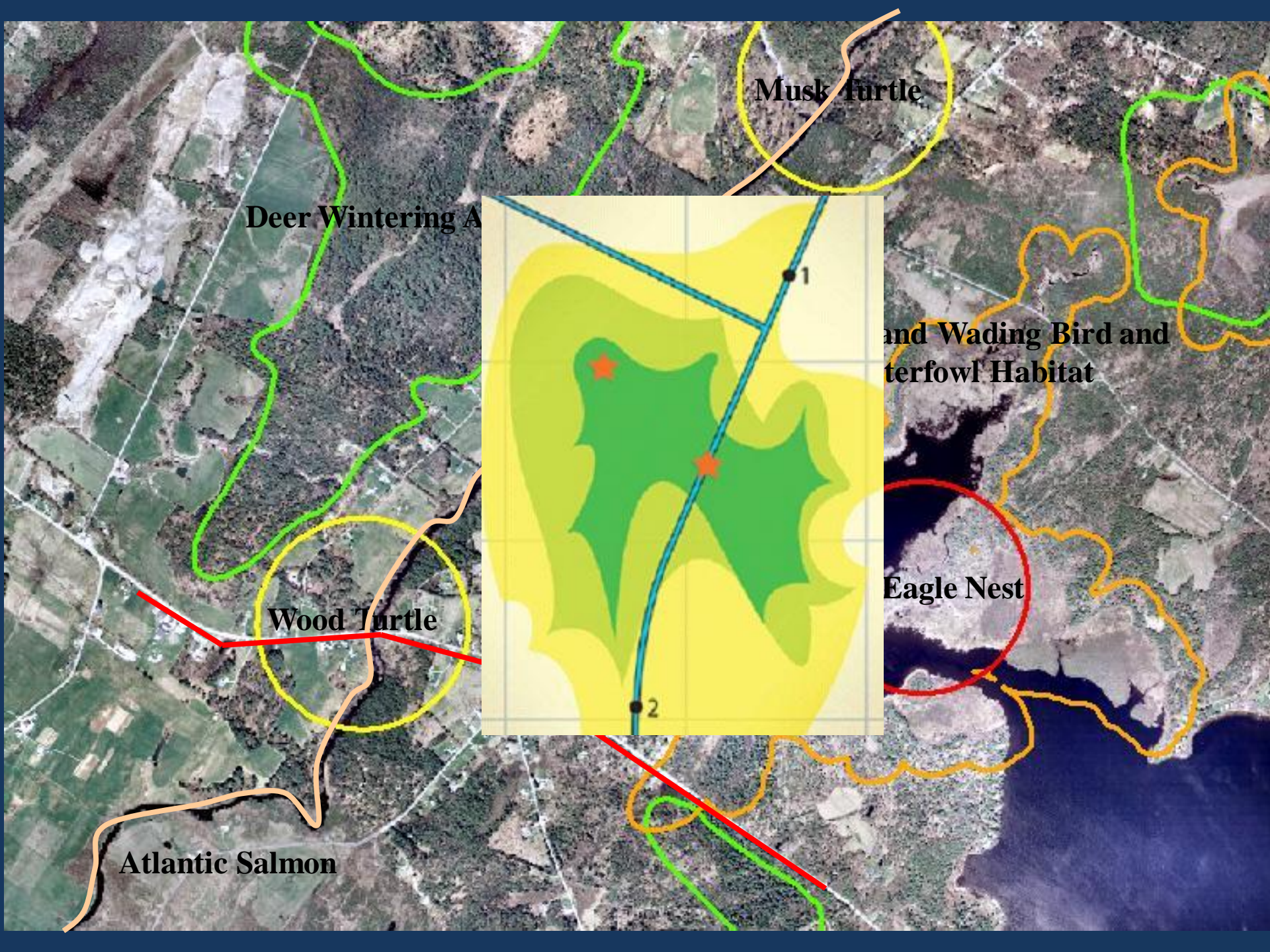


# So how are we doing?

	<b>Deliverable/Activity</b>	<b>Timeframe</b>
	<b>Gap analysis</b>	6/2013 – 8/2013
	<b>Draft modified IEF</b>	8/2013 – 9/2013
	<b>Draft work flow map</b>	9/2013 – 10/2013
	<b>Design and construction BMPs</b>	7/2013 – 1/2014
	<b>Programmatic Agreement</b>	1/2014 – 9/2014
	<b>Draft ecosystem crediting strategy</b>	10/2013 – 6/2014
	<b>Final work flow map</b>	9/2014 – 12/2014
	<b>Documented benefits/efficiencies</b>	9/2014 – 11/2014
	<b>Implementation schedule for full work plan</b>	11/2014 – 12/2014



- 1. Build/strengthen collaborative partnerships**
- 2. Integrate natural resource, transportation, and land use plans**
- 3. Create a regional ecosystem framework**
- 4. Assess effects on conservation priorities**
- 5. Establish and prioritize ecological actions**
- 6. Develop a crediting strategy**
- 7. Develop programmatic agreements and consultations**
- 8. Implement agreements and deliver projects**



Musk Turtle

Deer Wintering Area

Wood Turtle

Atlantic Salmon

Land and Wading Bird and Waterfowl Habitat

Eagle Nest

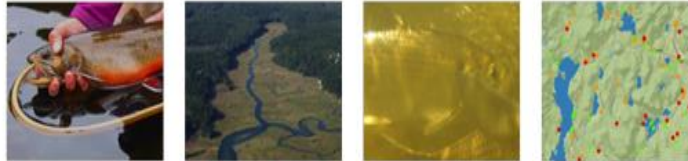


# Maine Stream Habitat Viewer



Maine Stream Habitat Viewer

Maine Stream Connectivity  
Work Group and Maine Office of GIS

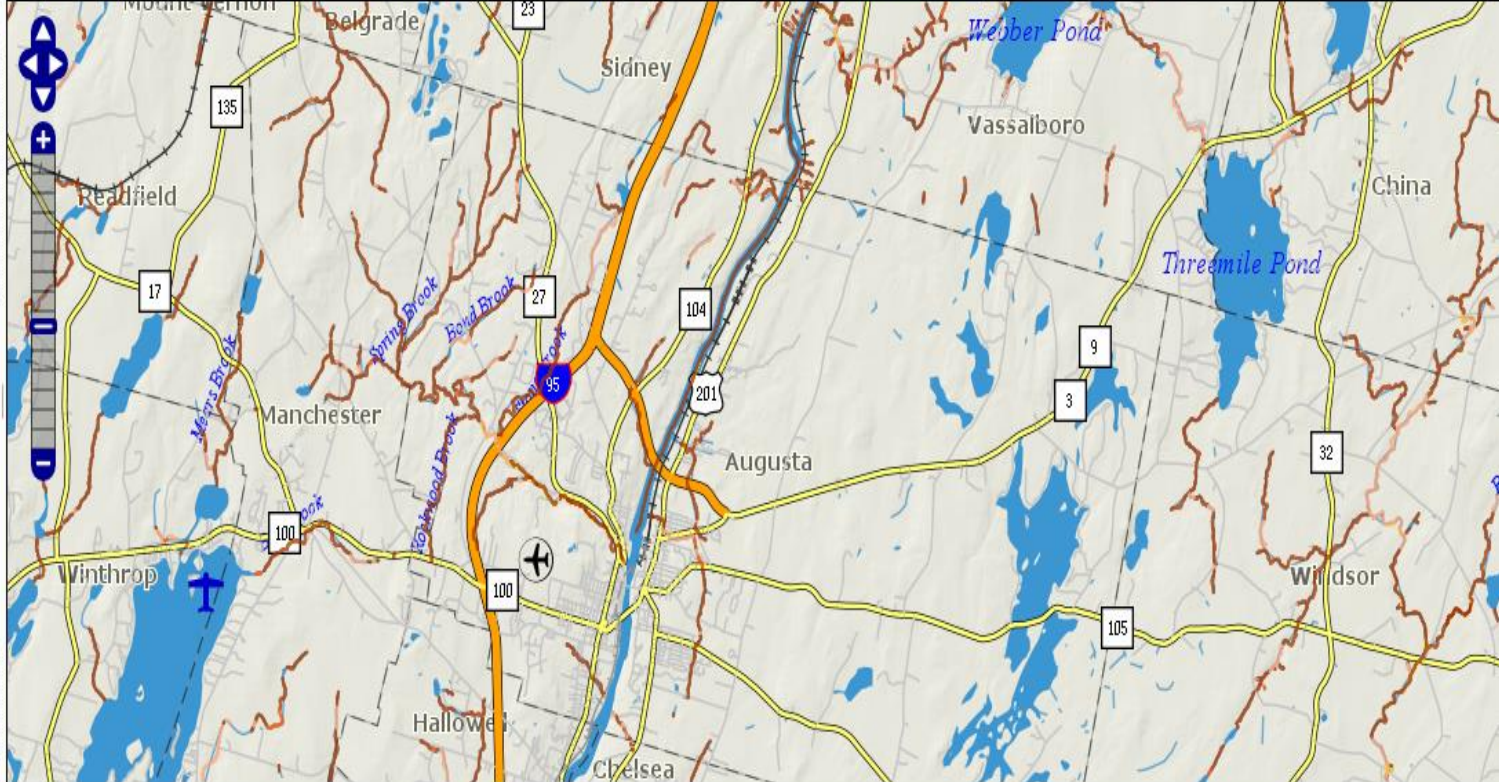


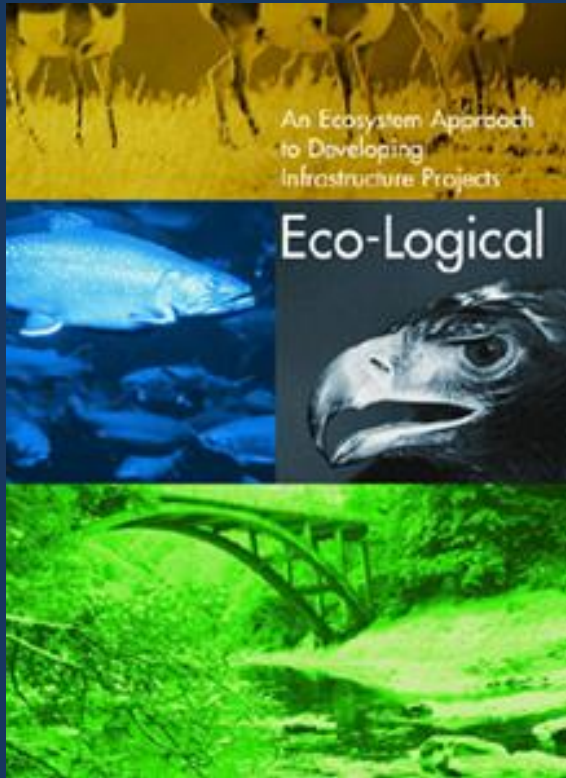
Home Use the Viewer How To Contacts About Barriers Training Barrier Surveys Partners

Augusta

Catalog Birds Eye View


- Rearing
- Potential
  - Modeled Rearing Habitat
    - Class 1
    - Class 2
    - Class 3
- Habitat Recovery Units
- Alewife
- Sea-Run Rainbow Smelt
- Wild Eastern Brook Trout
- Tidal Marshes
- Supplemental Habitat Layers
- Base Layers
  - State and County Boundaries
    - State Lines
    - County Lines
  - Town Boundaries and Names
  - County Names
- Transportation
- Water Features
- Watersheds










- 1. Build/strengthen collaborative partnerships**
- 2. Integrate natural resource, transportation, and land use plans**
- 3. Create a regional ecosystem framework**
- 4. Assess effects on conservation priorities**
- 5. Establish and prioritize ecological actions**
- 6. Develop a crediting strategy**
- 7. Develop programmatic agreements and consultations**
- 8. Implement agreements and deliver projects**

# “Priority” Crossings

 **Maine Stream Habitat Viewer**  
Maine Stream Connectivity  
Work Group and Maine Office of GIS

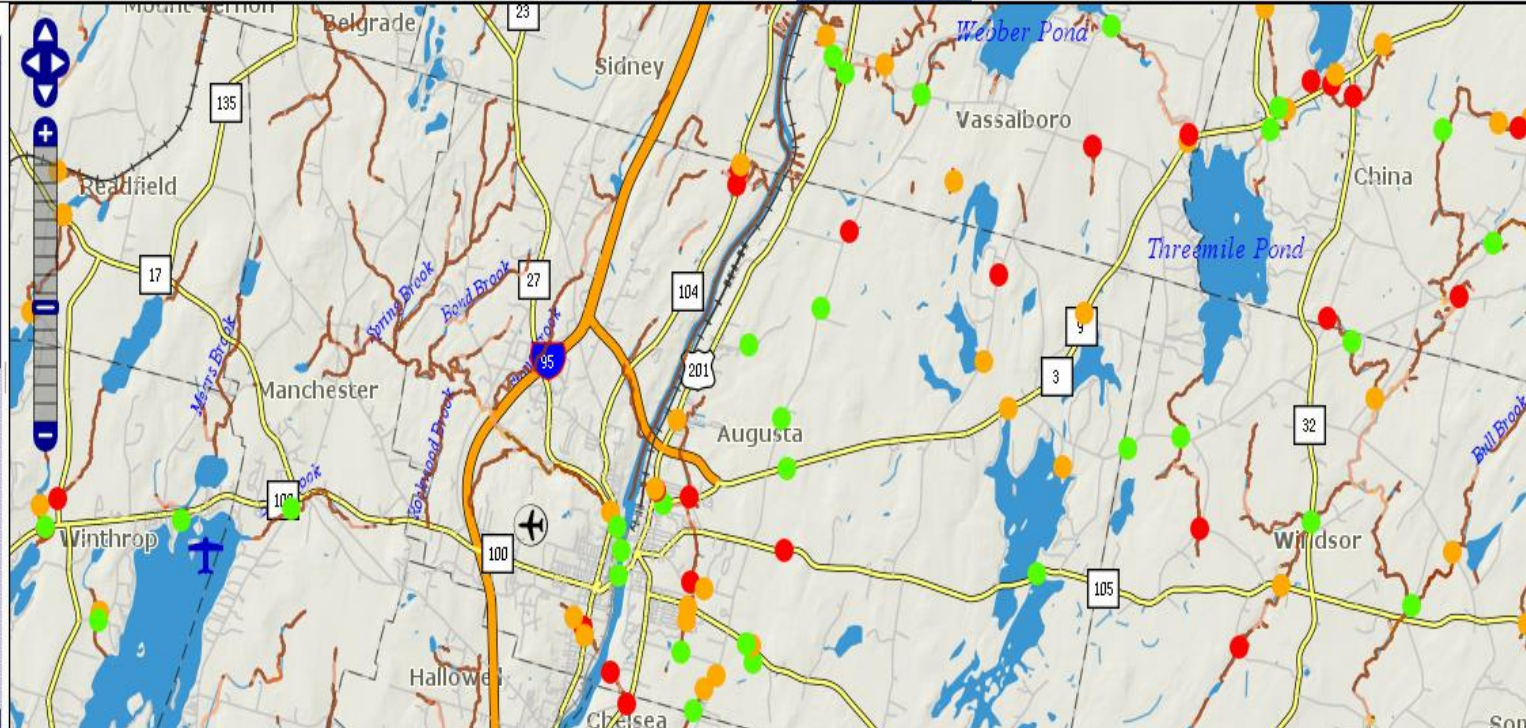
   

Home Use the Viewer How To Contacts About Barriers Training Barrier Surveys Partners

Augusta  Measure Measure Area Identify Clear Selection Build a Query **Bird's Eye View** Google Street View

Catalog Birds Eye View

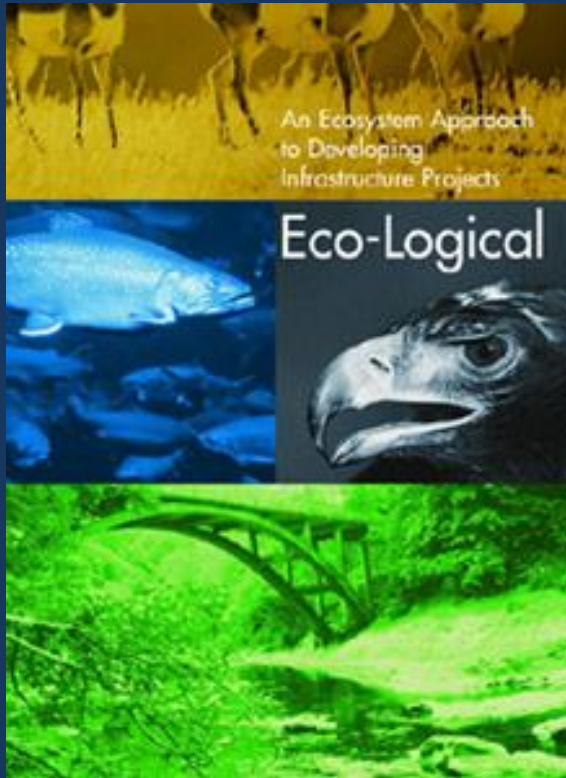
- Surveyed Stream Crossings**
  - Stream Crossings**
    - Barrier
    - Potential Barrier
    - No Barrier
  - Dams
  - Natural Barriers
  - Impassable Waterfalls
- High Interest Habitats**
  - Atlantic Salmon**
    - Documented
      - Surveyed Spawning Habitat**
        - Limited Spawning
        - Spawning
      - Surveyed Rearing Habitat**
        - Rearing
    - Potential
      - Modeled Rearing Habitat**



# Maine Conservation Priorities

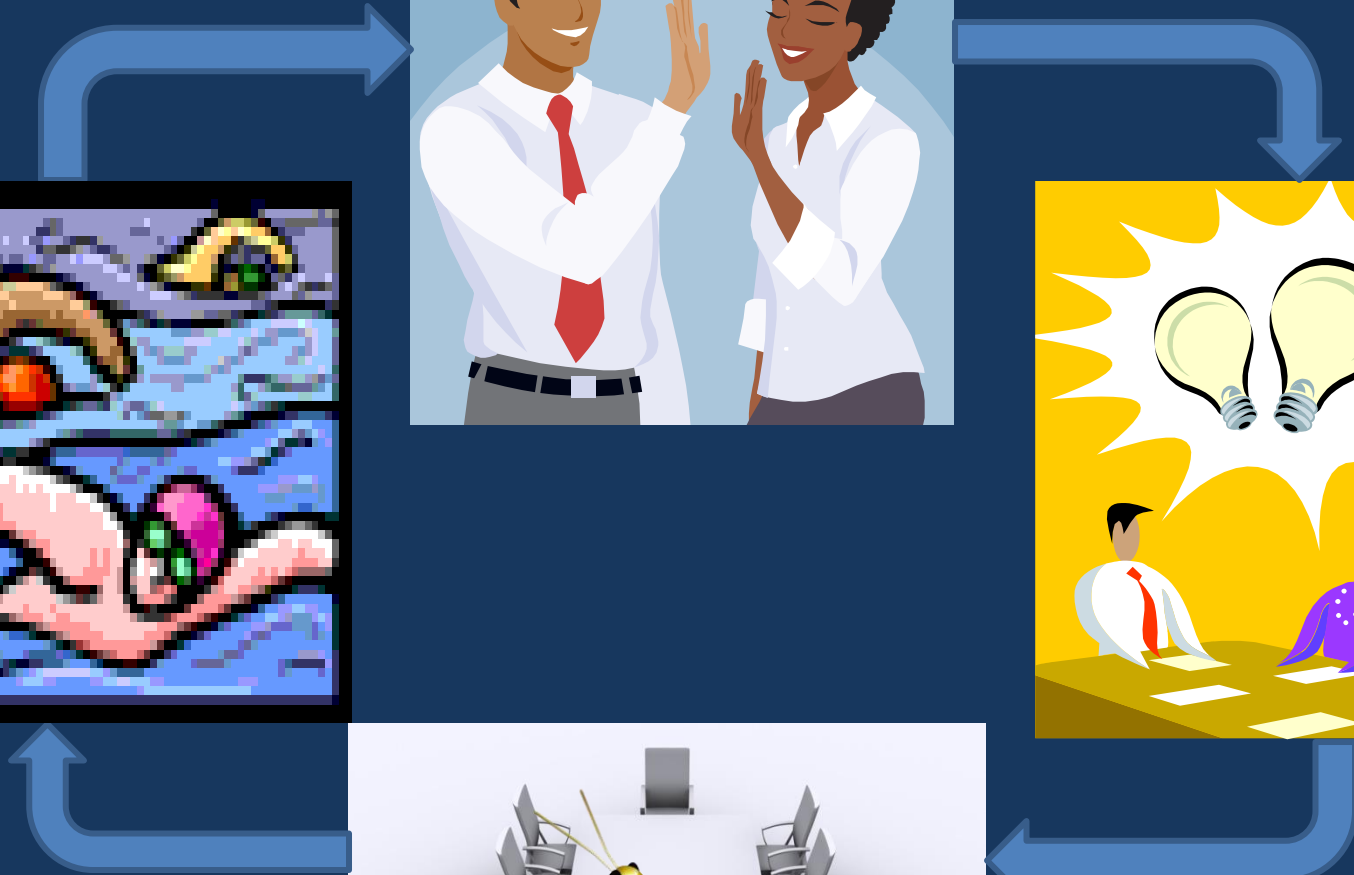




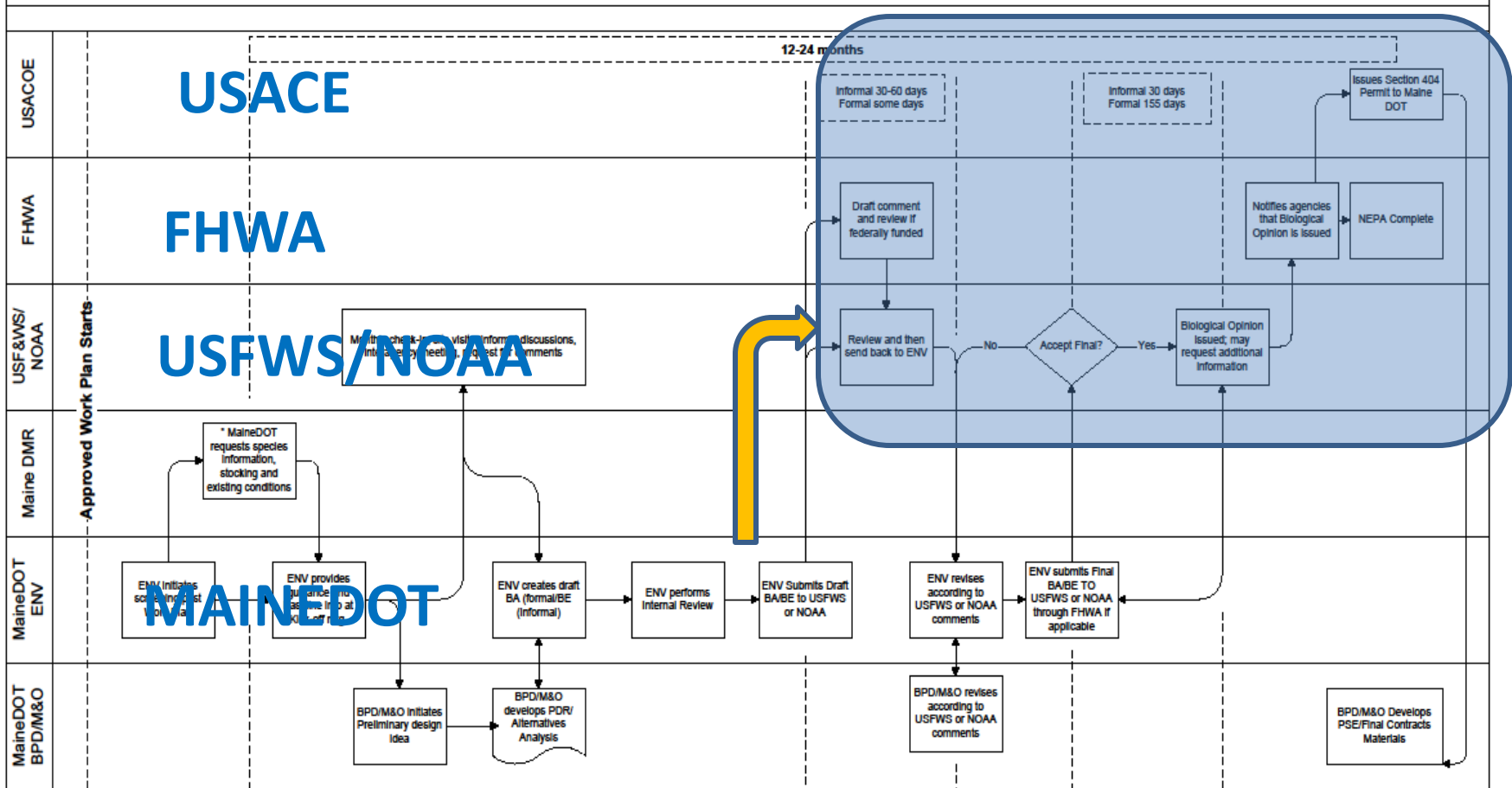


- 1. Build/strengthen collaborative partnerships**
- 2. Integrate natural resource, transportation, and land use plans**
- 3. Create a regional ecosystem framework**
- 4. Assess effects on conservation priorities**
- 5. Establish and prioritize ecological actions**
- 6. Develop a crediting strategy**
- 7. Develop programmatic agreements and consultations**
- 8. Implement agreements and deliver projects**

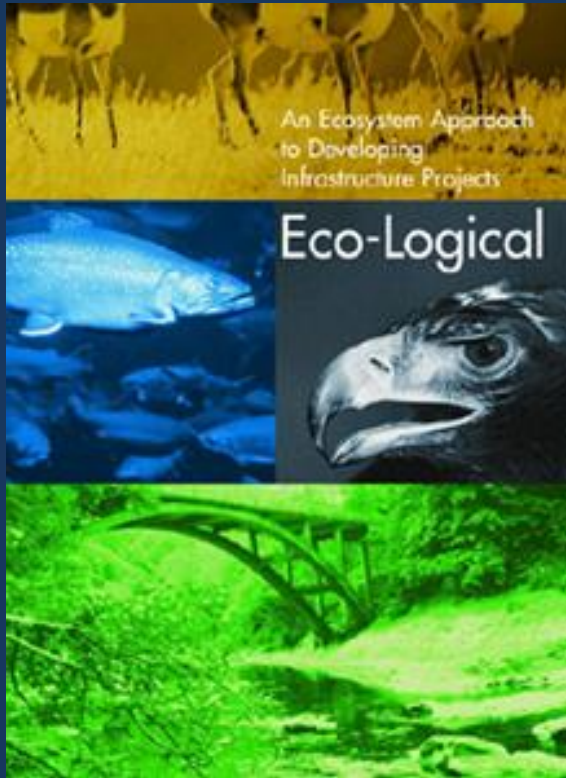




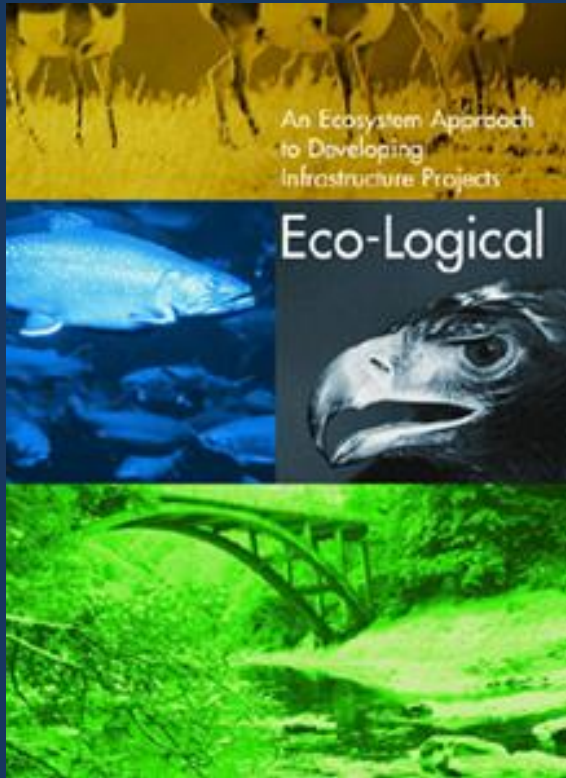
Multi-agency Implementation for Section 7 of the Endangered Species Act – Current process



\* Not regulatory at Federal level – advisory on local habitat, quality, presence of species, etc.



- 1. Build/strengthen collaborative partnerships**
- 2. Integrate natural resource, transportation, and land use plans**
- 3. Create a regional ecosystem framework**
- 4. Assess effects on conservation priorities**
- 5. Establish and prioritize ecological actions**
- 6. Develop a crediting strategy**
- 7. Develop programmatic agreements and consultations**
- 8. Implement agreements and deliver projects**



- 1. Build/strengthen collaborative partnerships**
- 2. Integrate natural resource, transportation, and land use plans**
- 3. Create a regional ecosystem framework**
- 4. Assess effects on conservation and restoration priorities**
- 5. Establish and prioritize ecological actions**
- 6. Develop a crediting strategy**
- 7. Develop programmatic agreements and consultations**
- 8. Implement agreements and deliver projects**

# Things we've learned from the wise (or not so wise) salmon...

- The stream less traveled is that way for a reason
- And we don't always get to know why
- Once you're in the turbulence, it's hard to see where you're going
- Some people focus on the lipstick, some focus on the pig
- Sometimes throwing money at a problem is helpful, if distasteful
- Even a village can get discouraged
- A step in any direction is progress

