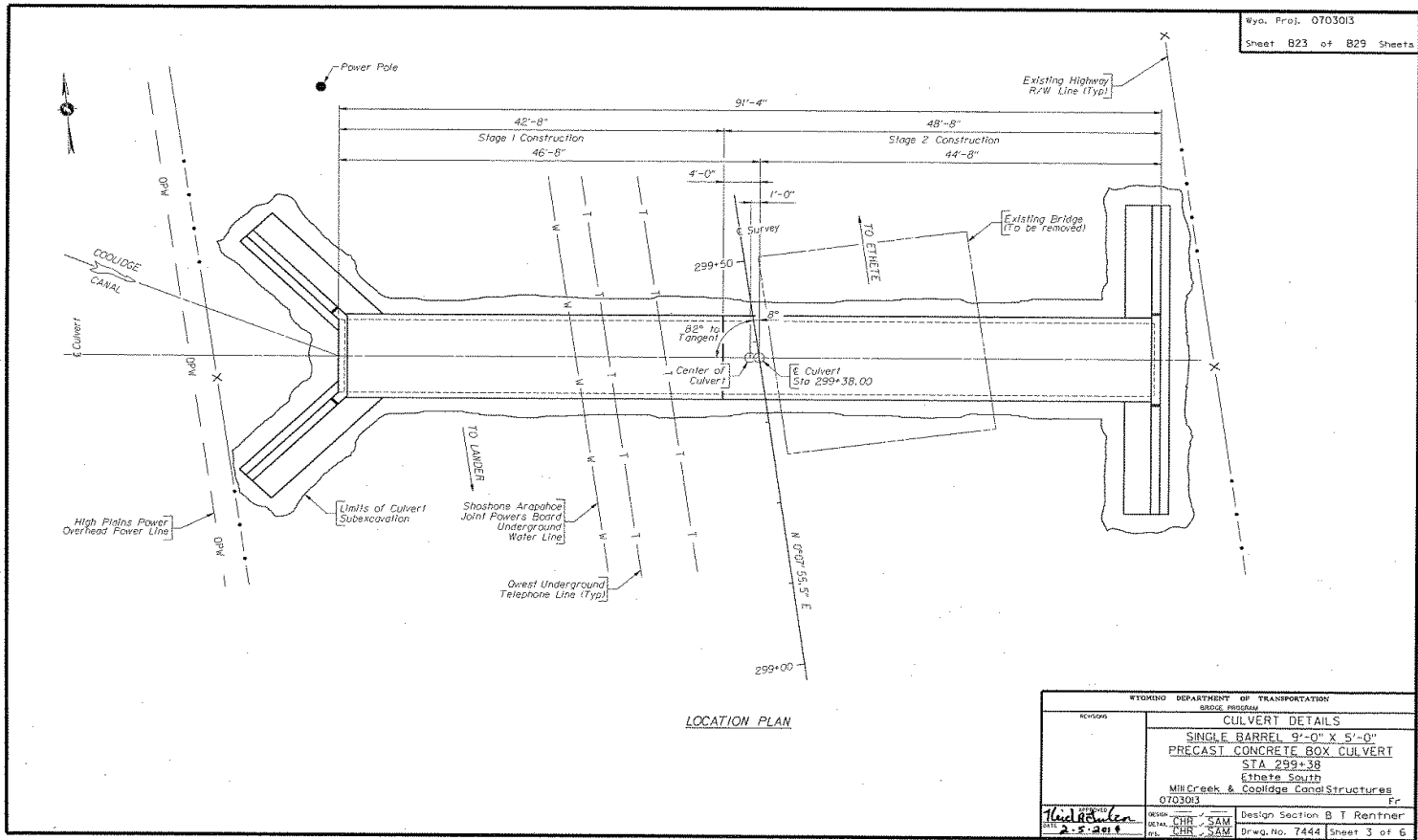


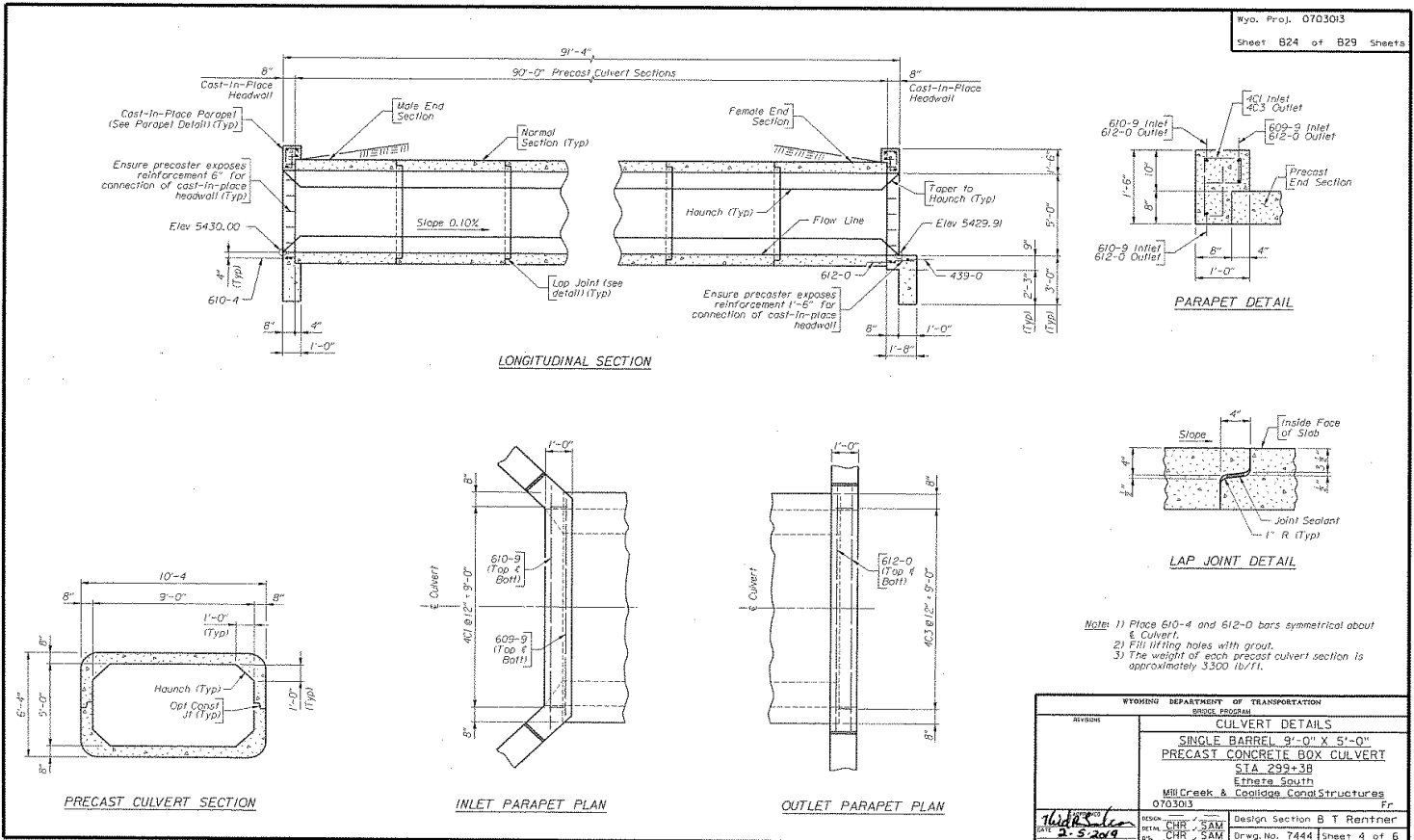
Accelerated Bridge Construction in WYOMING

- Precast Box Culverts
- Precast Abutment Caps
- Precast Bent Caps
- Full Depth Post Tensioned Concrete Deck Panels
- Miscellaneous

ABC WYOMING



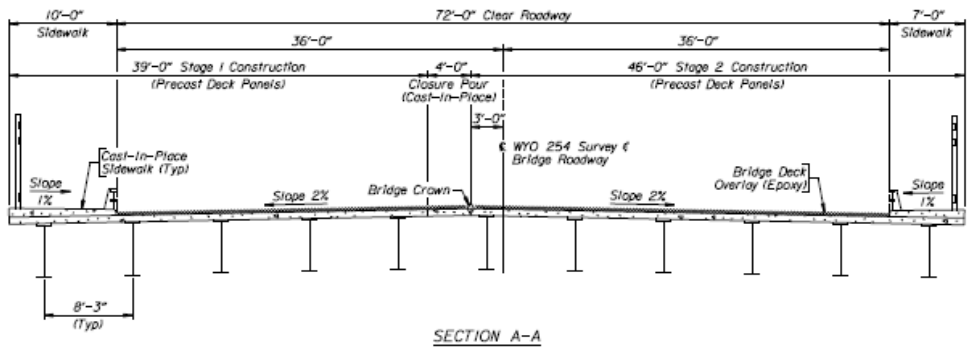
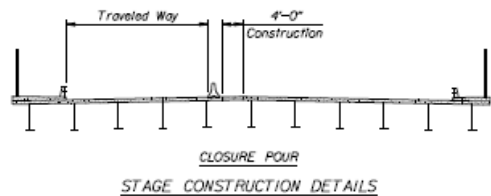
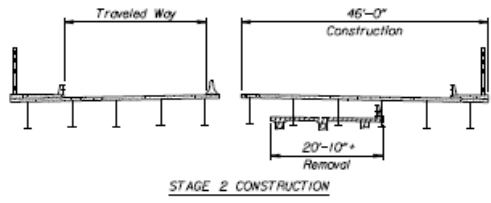
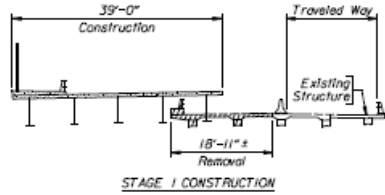
ABC Wyoming



ABC WYOMING



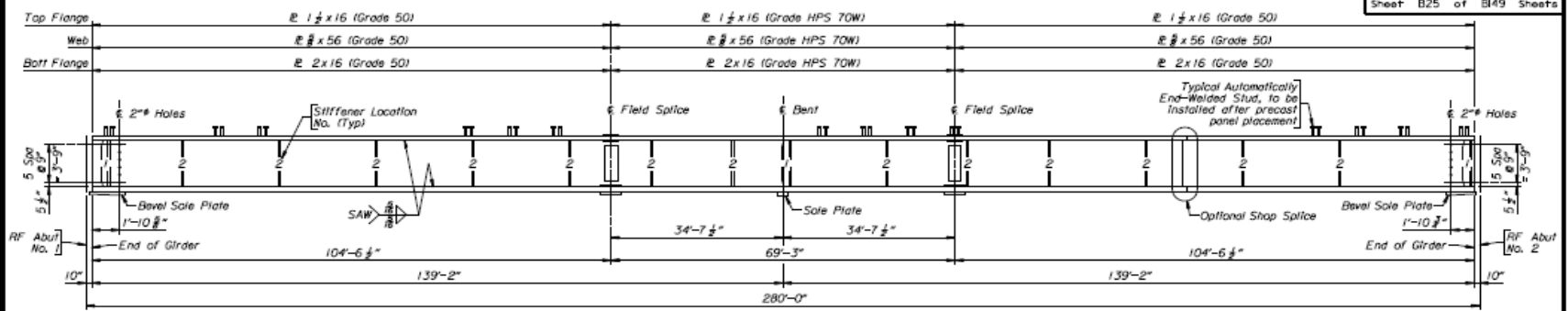
ABC WYOMING



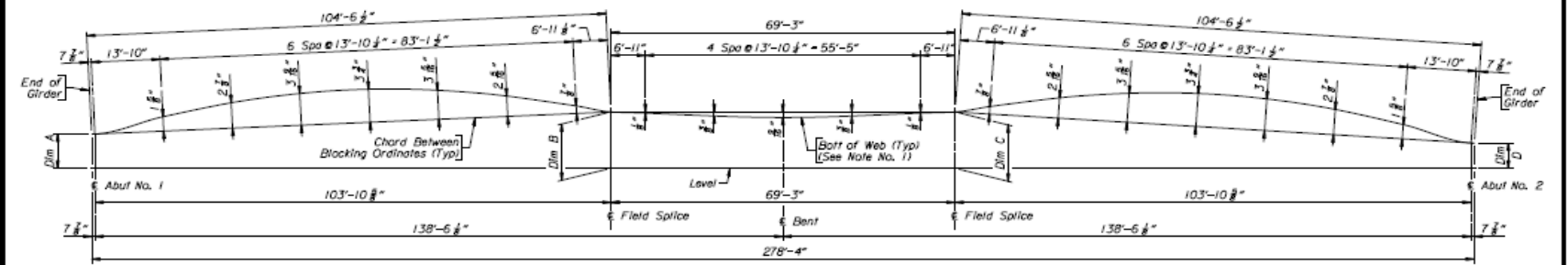
Note: For location of Section A-A, see Sheet No. 3.

WYOMING DEPARTMENT OF TRANSPORTATION	
STEESE PROJECT	
DESIGNED	GENERAL PLAN AND ELEVATION
	US 20/26 SPUR INTERCHANGE
	STA 437+88.83
	Casper Streets
	US 20/26 Spur & Salt Creek Highway
	P471001 No
APPROVED	Design Section J R Booher
DATE	8/25/11
BY	JRB
SCALE	Drwg. No. 7457 Sheet 4 of 97

ABC WYOMING



GIRDER ELEVATION
 (Longitudinal dimensions are parallel with finished grade)



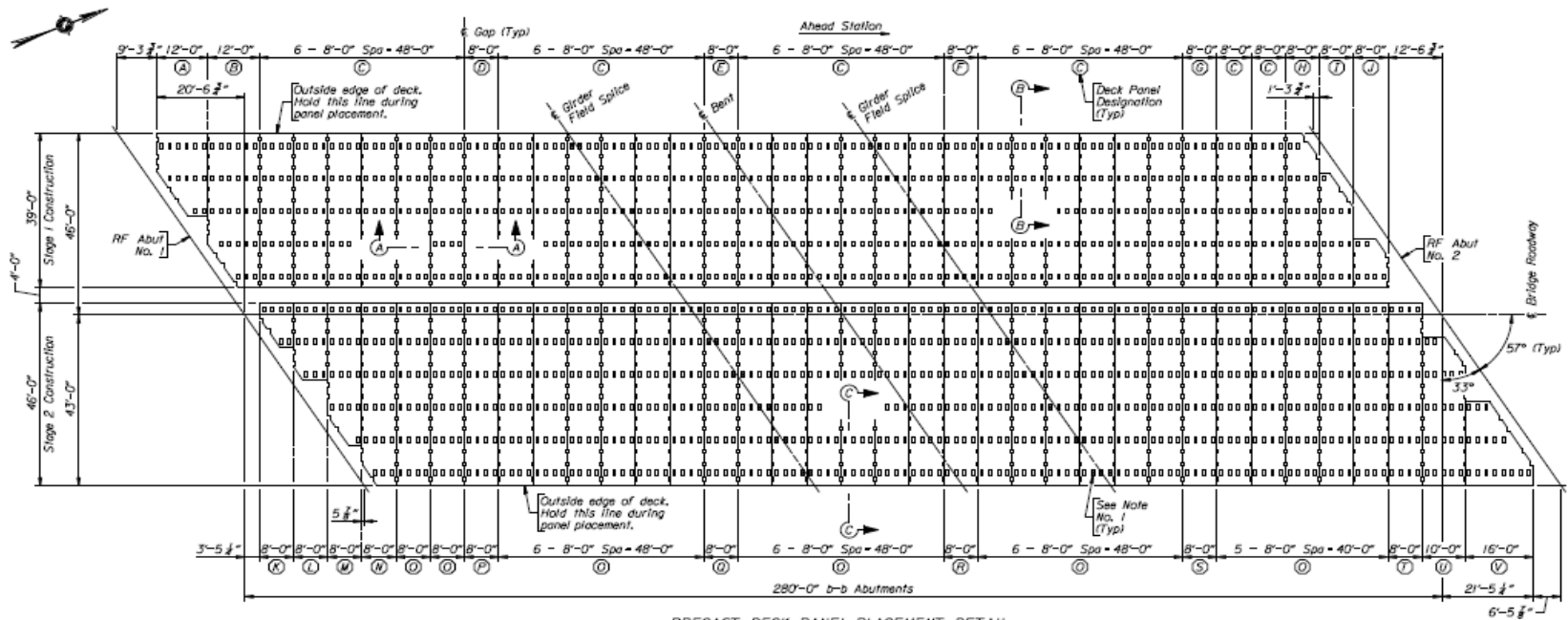
WEB CUTTING DIAGRAM
 (Includes dead load deflection and grade)

TABLE OF DIMENSIONS				
Location	Dim A	Dim B	Dim C	Dim D
Girder No. 1	1'-0"	2'-1 1/8"	2'-2 1/2"	1'-2 1/8"
Girder No. 2	1'-0"	2'-0 3/8"	2'-0 3/8"	1'-1 1/8"
Girder No. 3	1'-0 1/2"	2'-0 1/2"	2'-0 1/8"	1'-0"
Girder No. 4	1'-2 1/2"	2'-1 1/8"	2'-0 1/8"	1'-0"
Girder No. 5	1'-4 1/2"	2'-2 1/2"	2'-1 1/8"	1'-0"
Girder No. 6	1'-6 1/2"	2'-3 1/8"	2'-2 1/8"	1'-0"
Girder No. 7	1'-7 1/2"	2'-5"	2'-3 1/8"	1'-0"
Girder No. 8	1'-9 1/8"	2'-6 1/2"	2'-3 1/8"	1'-0"
Girder No. 9	1'-11 1/8"	2'-7 1/2"	2'-4 1/8"	1'-0"
Girder No. 10	2'-1 1/8"	2'-8 1/8"	2'-5 1/8"	1'-0"
Girder No. 11	2'-3"	2'-9 1/8"	2'-5 1/8"	1'-0"

Note: Top and bottom of web plates are parallel.

WYOMING DEPARTMENT OF TRANSPORTATION BRIDGE PROGRAM	
SUPERSTRUCTURE DETAILS	
US 20/26 SPUR INTERCHANGE STA 437+88.83 Casper Streets US 20/26 Spur & Salt Creek Highway P471001 No	
DESIGNED BY	J.R. BOOHER
CHECKED BY	J.R. BOOHER
DATE	11/15/11
BY	J.R. BOOHER
SCALE	AS SHOWN
PROJECT	Design Section J R Booher
DWG NO.	7457 Sheet 25 of 37

ABC WYOMING

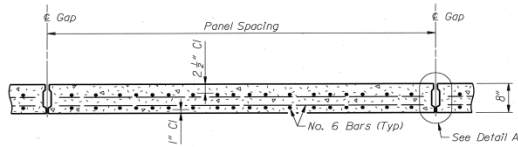


PRECAST DECK PANEL PLACEMENT DETAIL

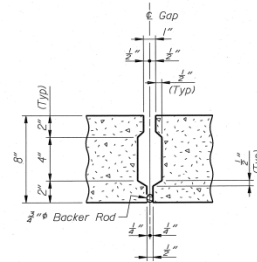
- Notes: 1) Do not install shear connectors in indicated blockouts over girder field splices.
 2) For Sections A-A, B-B and C-C, see Sheet No. 47.

WYOMING DEPARTMENT OF TRANSPORTATION	
STEEL PROGRAM	
PRECAST DECK PANEL DETAILS	
US 20/26 SPUR INTERCHANGE	
STA 437+86.83	
Casper Streets	
US 20/26 Spur & Salt Creek Highway	
P471001 No	
DESIGNED BY	J.R.B. v. W.H.B.
CHECKED BY	J.R.B. v. J.H.R.
DATE	11/10
DESIGNED BY	J.R. Booher
DATE	11/10
DRW. NO.	7457
SHEET NO.	45 of 97

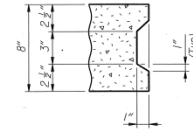
ABC WYOMING



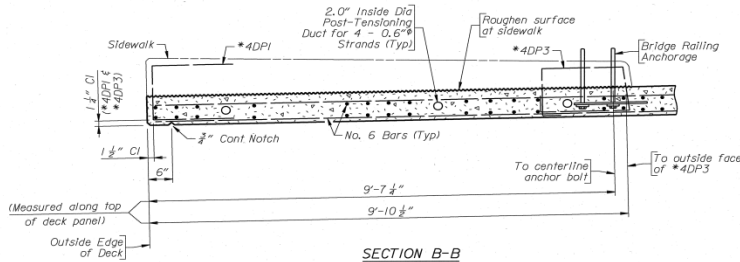
SECTION A-A
(Post-tensioning ducts not shown)



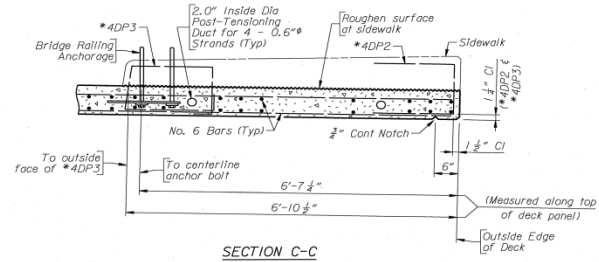
DETAIL A
(Fill keyway with nonshrink grout)



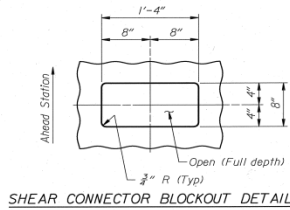
END KEYWAY DETAIL
(Req'd at edges marked on Plans)



SECTION B-B



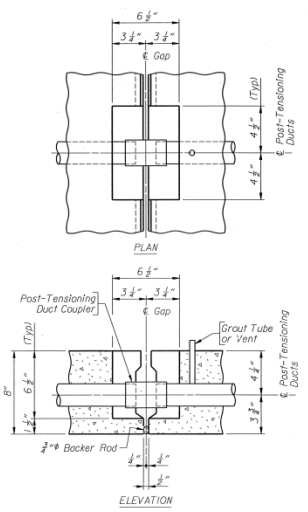
SECTION C-C



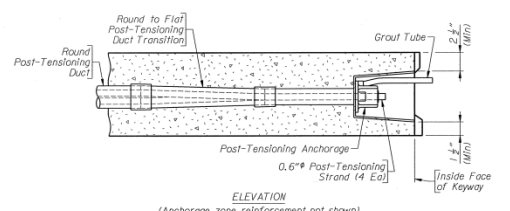
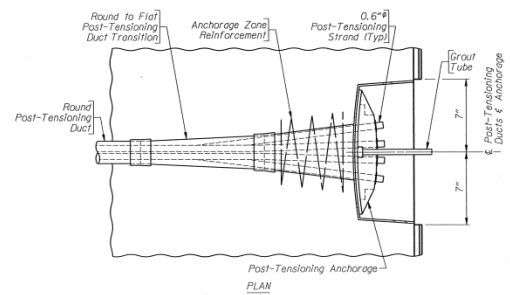
SHEAR CONNECTOR BLOCKOUT DETAIL

Note: 1) For location of Sections A-A, B-B and C-C, see Sheet No. 45.
2) For Bridge Railing Details, see Sheets No. 32-34.

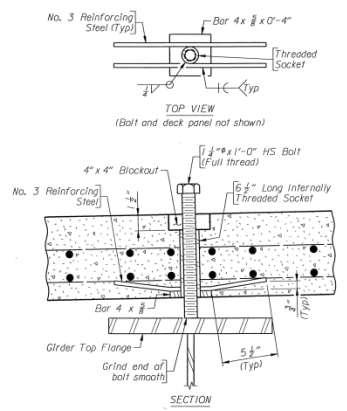
WYOMING DEPARTMENT OF TRANSPORTATION	
BRIDGE PROGRAM	
REVISIONS	PRECAST DECK PANEL DETAILS US 20/26 SPUR INTERCHANGE STA 437+88.83 Casper Streets US 20/26 Spur & Salt Creek Highway P471001 Na
DESIGN: JWR, WDB DETAIL: WES, JWR DATE: 8-2-03 BY: G. Bels	Design Section J R Booher Drwg. No. 7457 Sheet 47 of 97



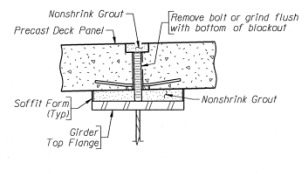
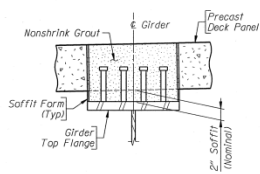
POST-TENSIONING DUCT
 CONNECTION BLOCKOUT DETAILS



POST-TENSIONING DUCT
 END ANCHOR DETAILS
 (Shown at end panel straight edges)

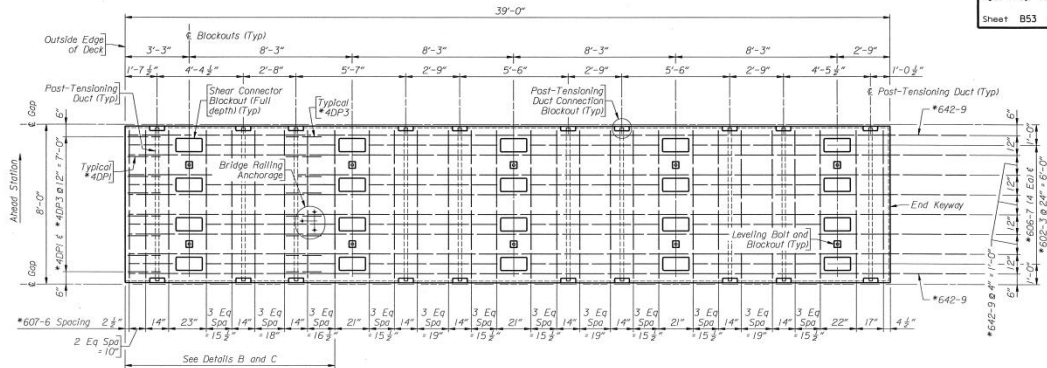


LEVELING BOLT DETAILS

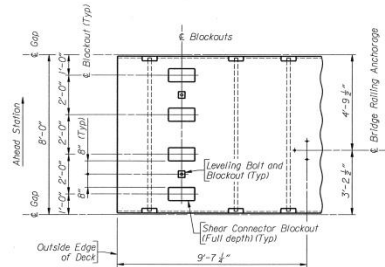


SOFFIT DETAILS

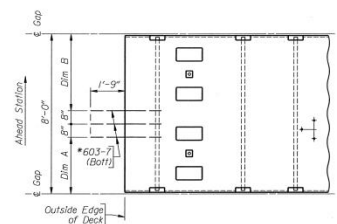
WYOMING DEPARTMENT OF TRANSPORTATION BRIDGE PROGRAM	
REVISION	PRECAST DECK PANEL DETAILS
	US 20/26 SPUR INTERCHANGE
	STA 437+88.83
	Casper Streets
	US 20/26 Spur & Salt Creek Highway
	P471001 No
DESIGNED BY H. B. ...	DESIGN SECTION J. R. BOOHER
CHECKED BY R. S. ...	DRWG. NO. 7457
DATE 6-6-2013	SHEET 48 OF 97



DECK PANELS C, D, E, F AND G PLAN
 (Deck Panel C) shown, others listed typical
 except reinforcing steel for light pole supports
 (26 req'd - Deck Panel C)
 (1 each req'd - Deck Panels D, E, F and G)



DETAIL B
 (Typical all deck panels this sheet)



DETAIL C
 (Showing reinforcing steel for light pole support
 Deck Panels D, E, F and G)

TABLE OF DIMENSIONS		
Deck Panel	Dim A	Dim B
(D)	1'-7 1/2"	5'-0 1/2"
(E)	2'-2 3/4"	4'-5 1/2"
(F)	2'-9 3/4"	3'-10 1/2"
(G)	3'-4 3/4"	3'-3 1/2"

Note: Number 6 straight bar callouts and spacings are typical top and bottom of deck panel.

WYOMING DEPARTMENT OF TRANSPORTATION	
BRIDGE PROGRAM	
REVISIONS	
PRECAST DECK PANEL DETAILS	
US 20/26 SPUR INTERCHANGE	
STA 437+88.83	
Casper Streets	
US 20/26 Spur & Salt Creek Highway	
P471001 No.	
DESIGNER JWR, WDB	DESIGN SECTION J R Booher
CHECKER JWR	DATE 7/12/01
DATE 6-28-01	DRWG. NO. 7457
	SHEET 53 OF 97

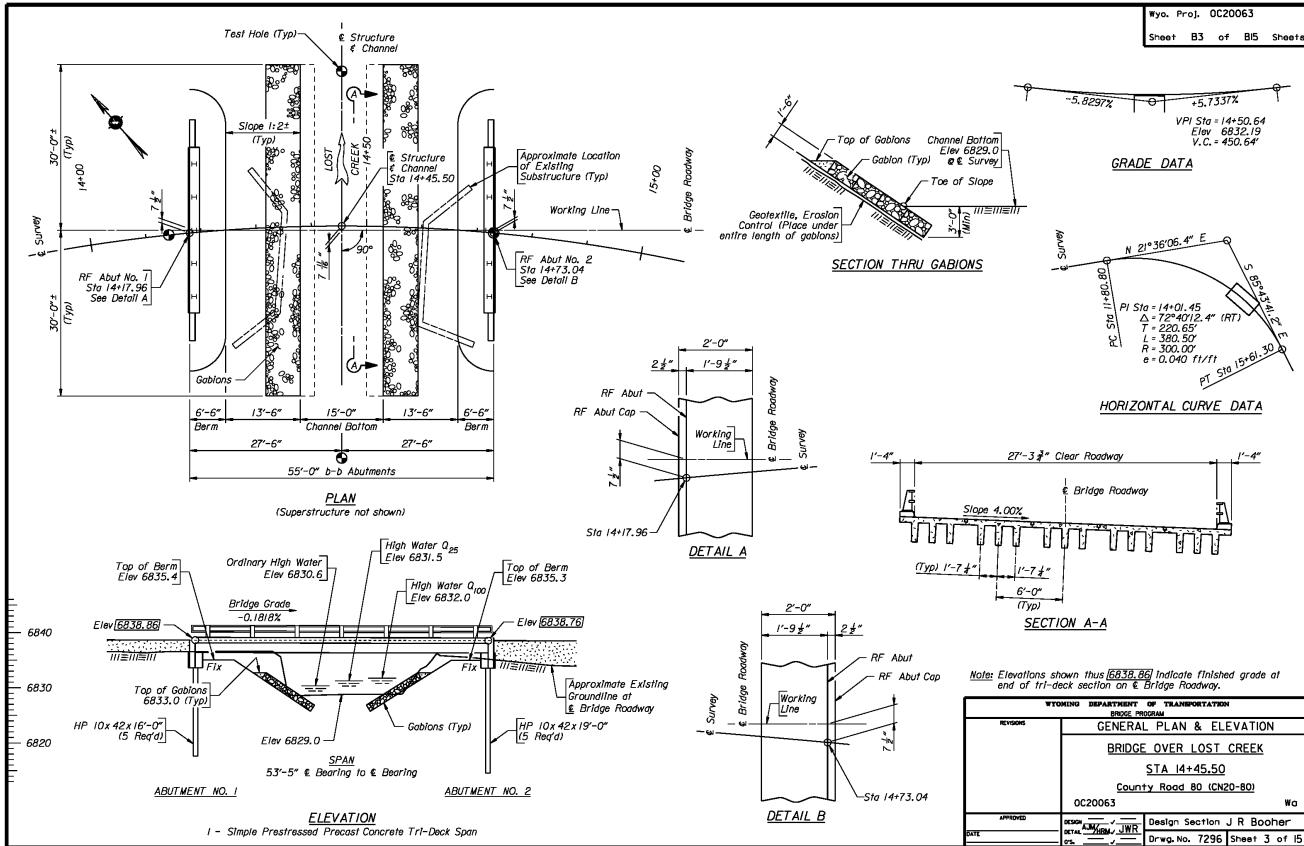
ABC WYOMING



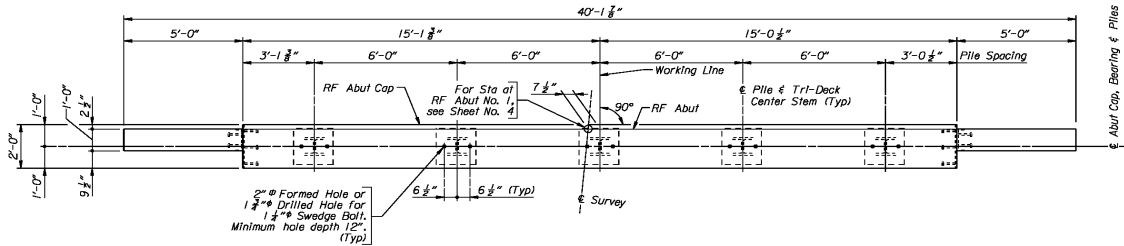
ABC WYOMING



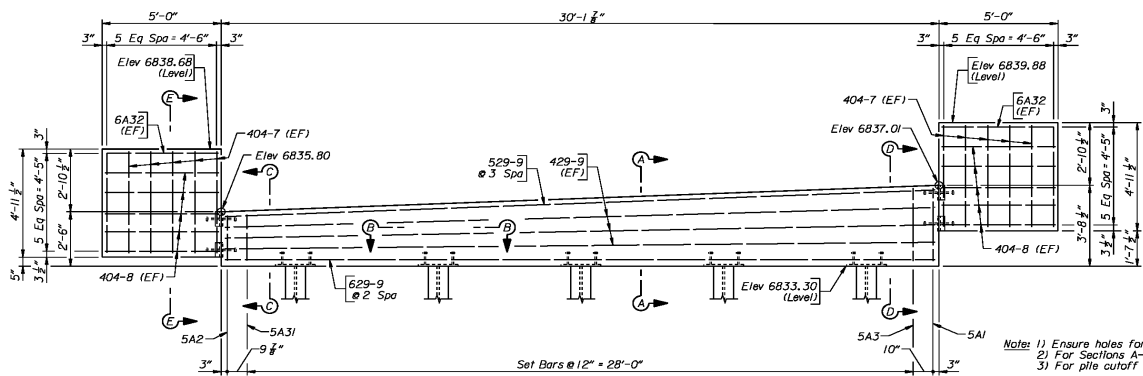
ABC WYOMING



ABC WYOMING



ABUTMENT NO. 1 PLAN

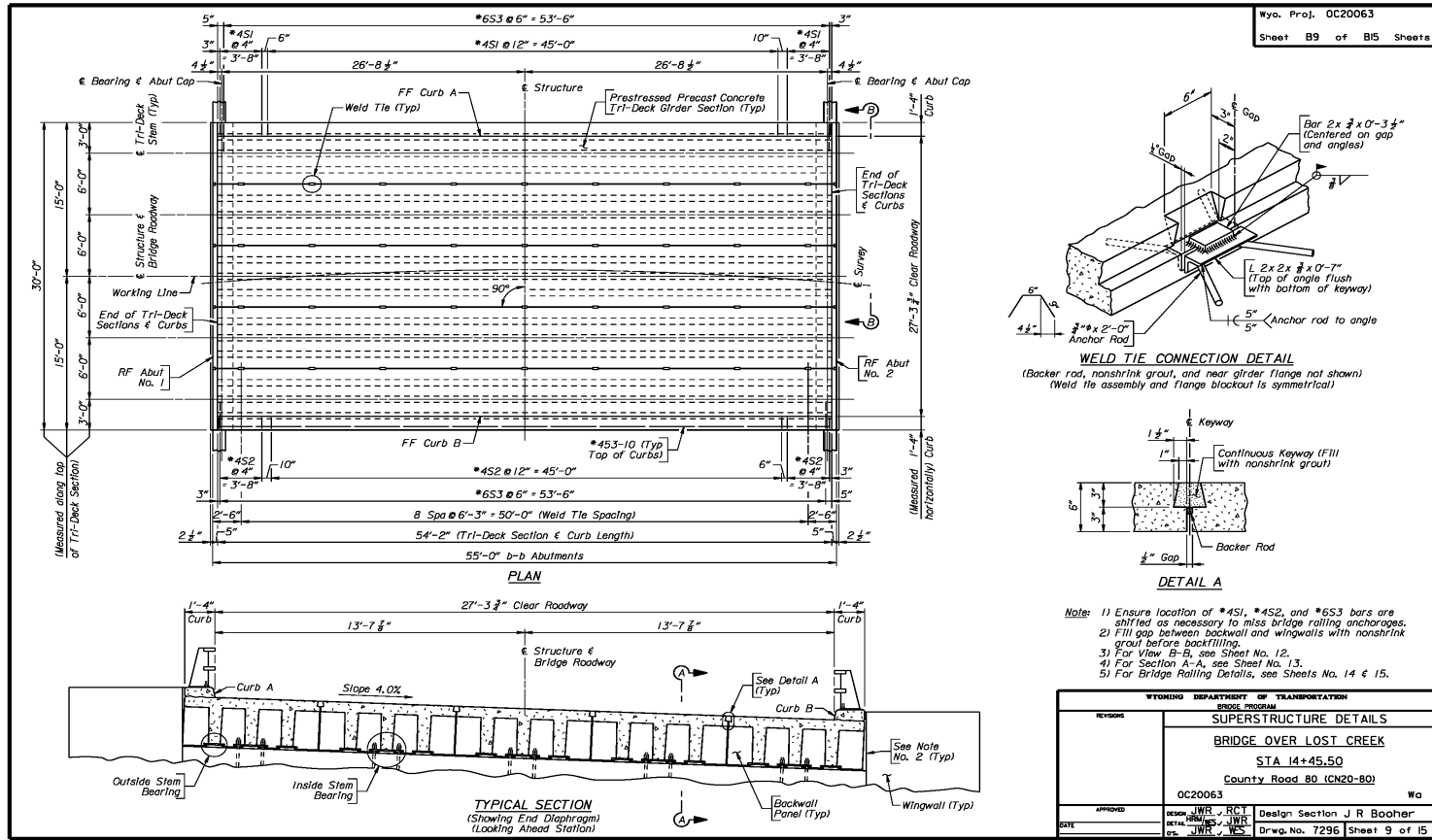


ABUTMENT NO. 1 ELEVATION
 (Looking back station)

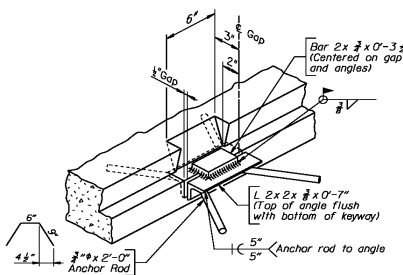
Notes: 1) Ensure holes for swedge bolts are perpendicular to top of cap.
 2) For Sections A-A, B-B, C-C, D-D, and E-E, see Sheet No. 8.
 3) For pile cutoff elevations, see Sheet No. 4.

WYOMING DEPARTMENT OF TRANSPORTATION	
BRIDGE PROGRAM	
ABUTMENT DETAILS	
BRIDGE OVER LOST CREEK	
STA 14+45.50	
County Road 80 (CN20-80)	
OC20063 Wyo	
DESIGN: JWR, RCT	Design Section J R Booher
APPROVED: JWR	DATE: JWR, RCT
Drwg. No. 7296	Sheet 6 of 15

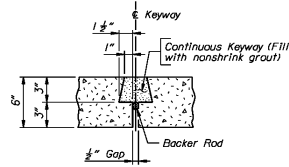
ABC WYOMING



Wyo. Proj. 0C20063
 Sheet B9 of B15 Sheets



WELD TIE CONNECTION DETAIL
 (Backer rod, nonshrink grout, and near girder flange not shown)
 (Weld tie assembly and flange breakout is symmetrical)

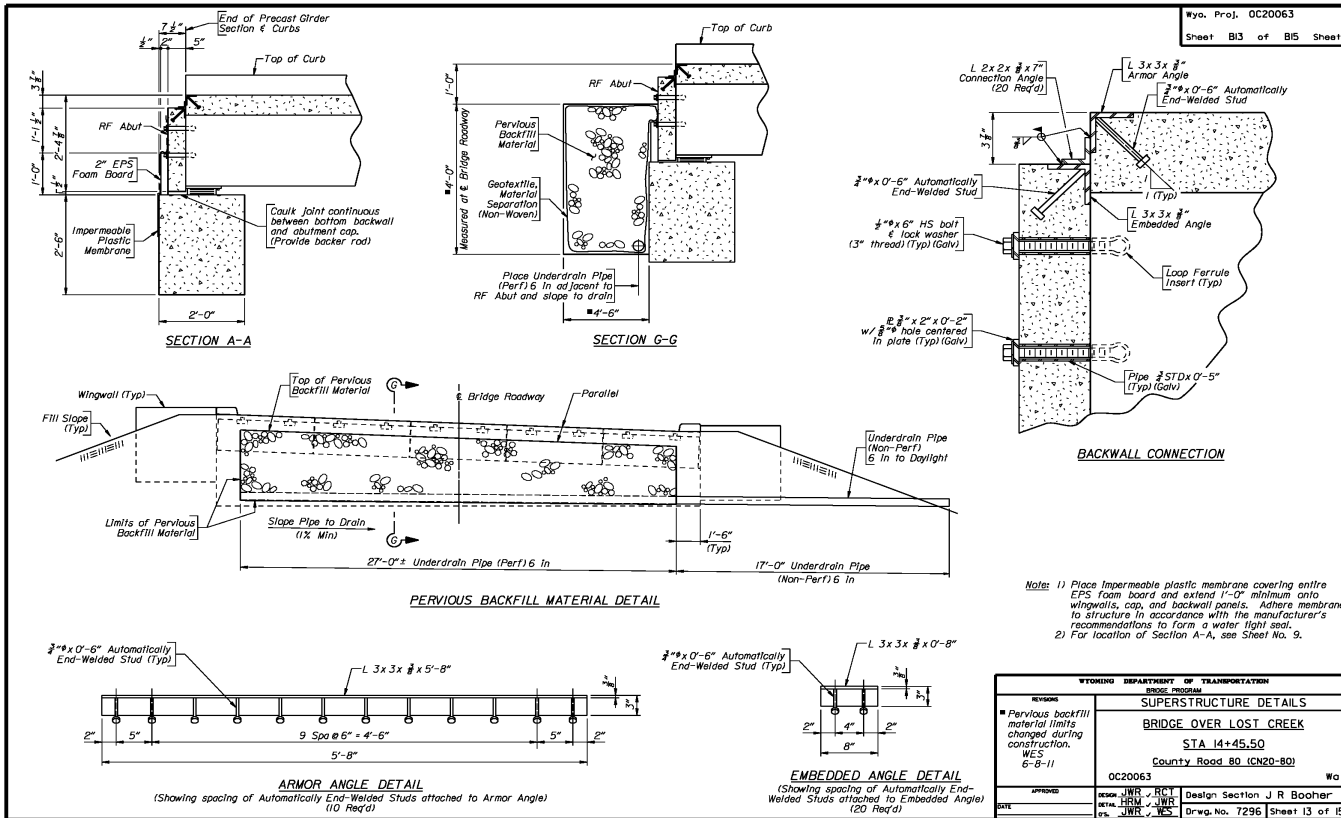


- Note:**
- 1) Ensure location of #4S1, #4S2, and #6S3 bars are shifted as necessary to miss bridge railing anchorages.
 - 2) Fill gap between backwall and wingwalls with nonshrink grout before backfilling.
 - 3) For View B-B, see Sheet No. 12.
 - 4) For Section A-A, see Sheet No. 13.
 - 5) For Bridge Railing Details, see Sheets No. 14 & 15.

WYOMING DEPARTMENT OF TRANSPORTATION	
BRIDGE PROGRAM	
SUPERSTRUCTURE DETAILS	
BRIDGE OVER LOST CREEK	
STA 14+45.50	
County Road 80 (CN20-80)	
0C20063	
DESIGN	JWR, RCL
DETAIL	JWR, RCL
DATE	07/11/11
DESIGN SECTION	J R Boehler
DRWG. NO.	7296
SHEET	9 of 15

a63a1ss1_v8.dgn

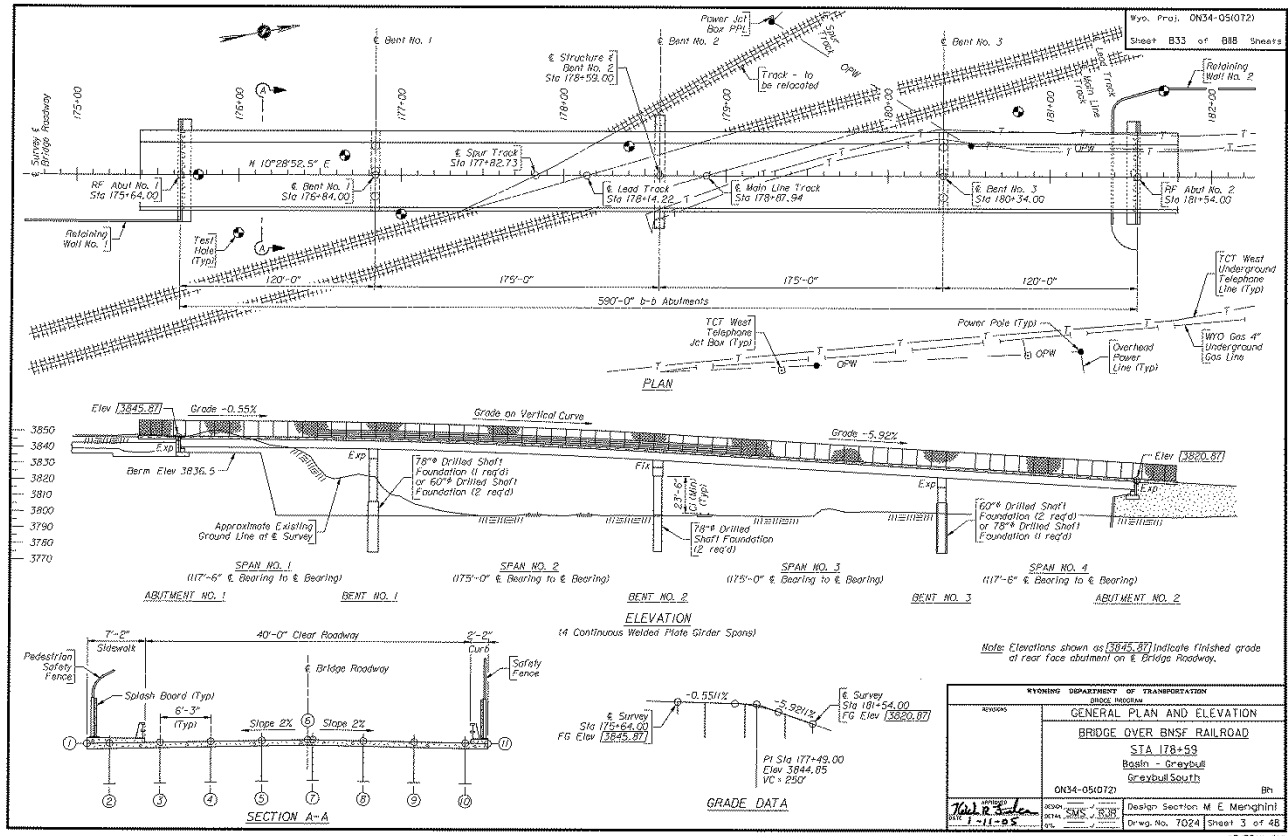
ABC WYOMING



Note: 1) Place impermeable plastic membrane covering entire EPS foam board and extend 1'-0" minimum onto wingwalls, cap, and backwall panels. Adhere membrane to structure in accordance with the manufacturer's recommendations to form a water tight seal.
2) For location of Section A-A, see Sheet No. 9.

WYOMING DEPARTMENT OF TRANSPORTATION	
BRIDGE PROGRAM	
REVISION	SUPERSTRUCTURE DETAILS
<ul style="list-style-type: none"> PerVIOUS backfill material limits changed during construction. WES 6-8-11 	BRIDGE OVER LOST CREEK
	STA 14+45.50
	County Road 80 (CN20-80)
0C20063	Wyo
APPROVED	Design Section J R Booher
DATE	Drwg. No. 7296 Sheet 13 of 15

ABC WYOMING

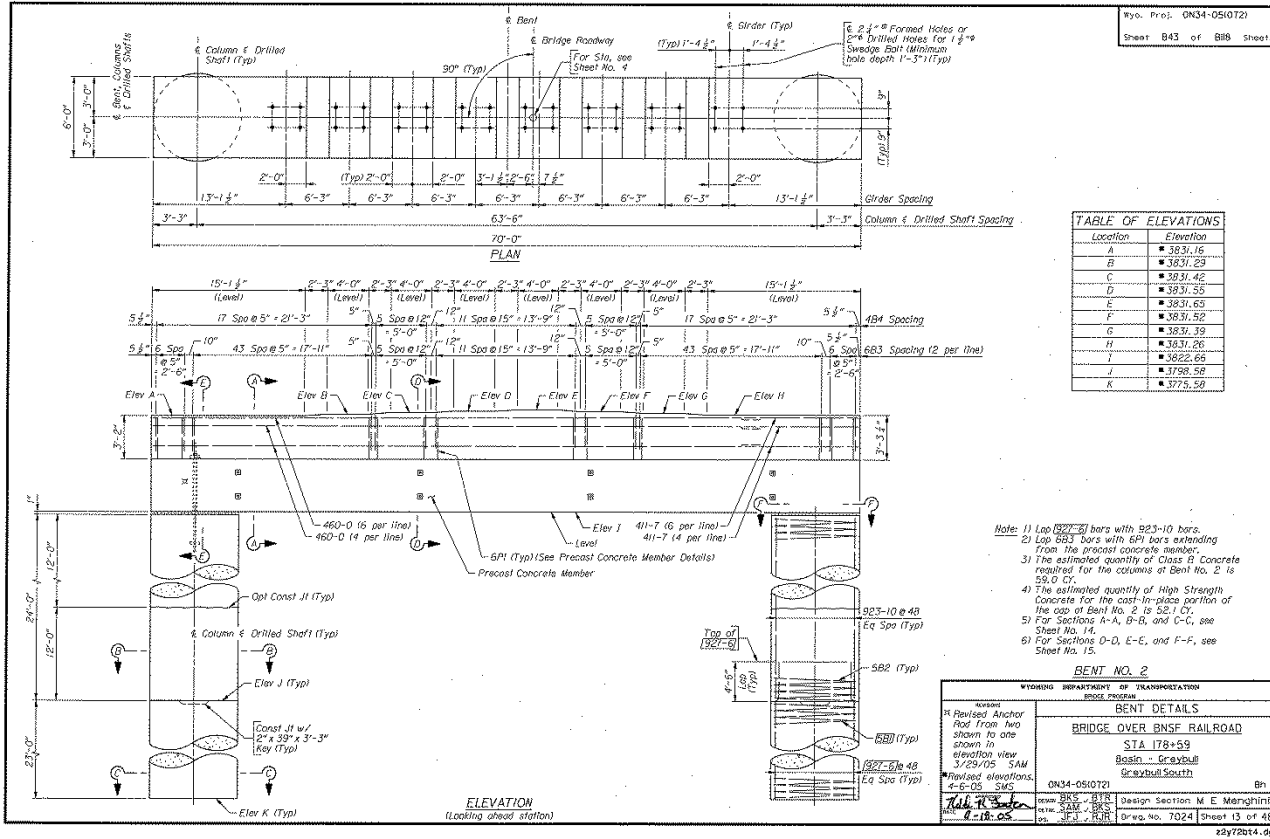


WYOMING DEPARTMENT OF TRANSPORTATION	
SUBJECT PROGRAM	
GENERAL PLAN AND ELEVATION	
BRIDGE OVER BNSF RAILROAD	
STA 178+53	
Basin - Greybull	
Greybull South	
ON34-05072	
2030	Design Section M. E. Menghini
2034	Dr-wg. no. TO24
2032	Sheet 3 of 48

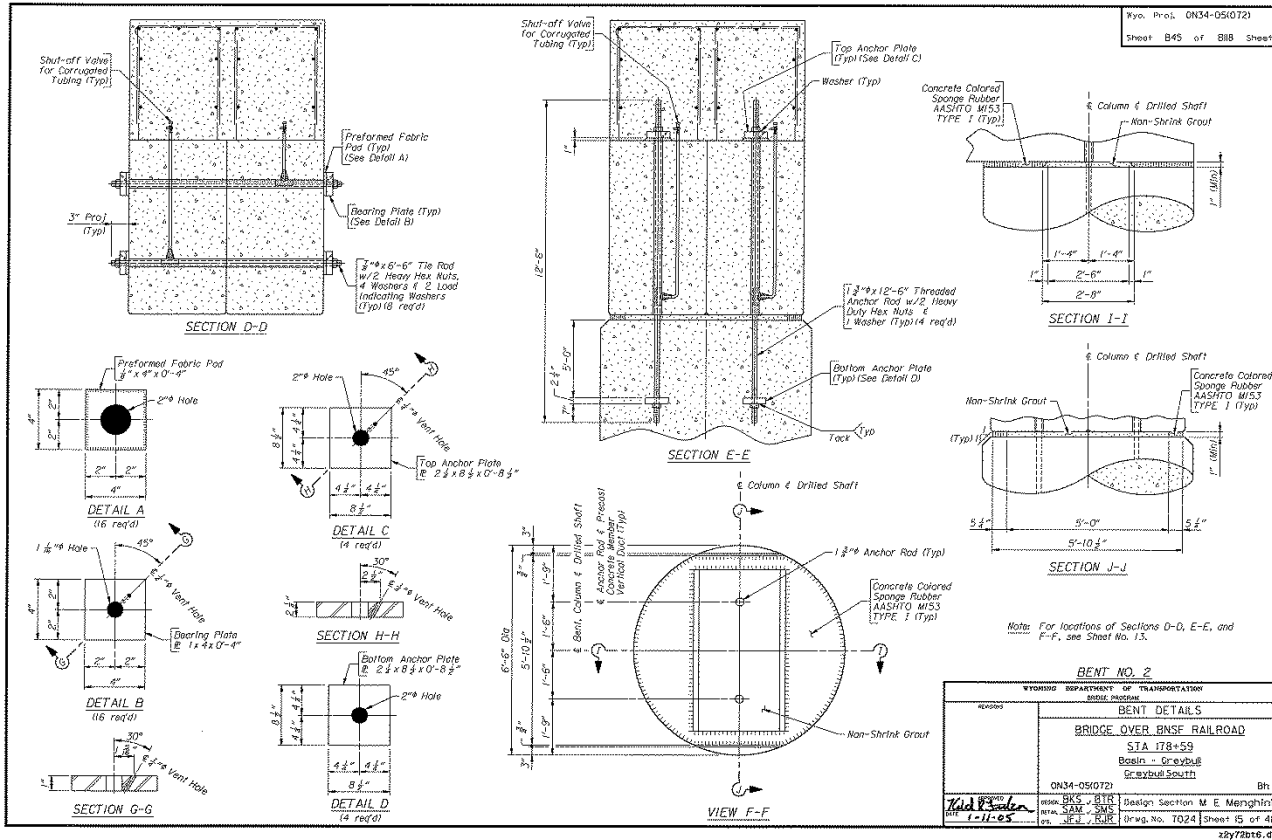
ABC WYOMING



ABC WYOMING



ABC WYOMING



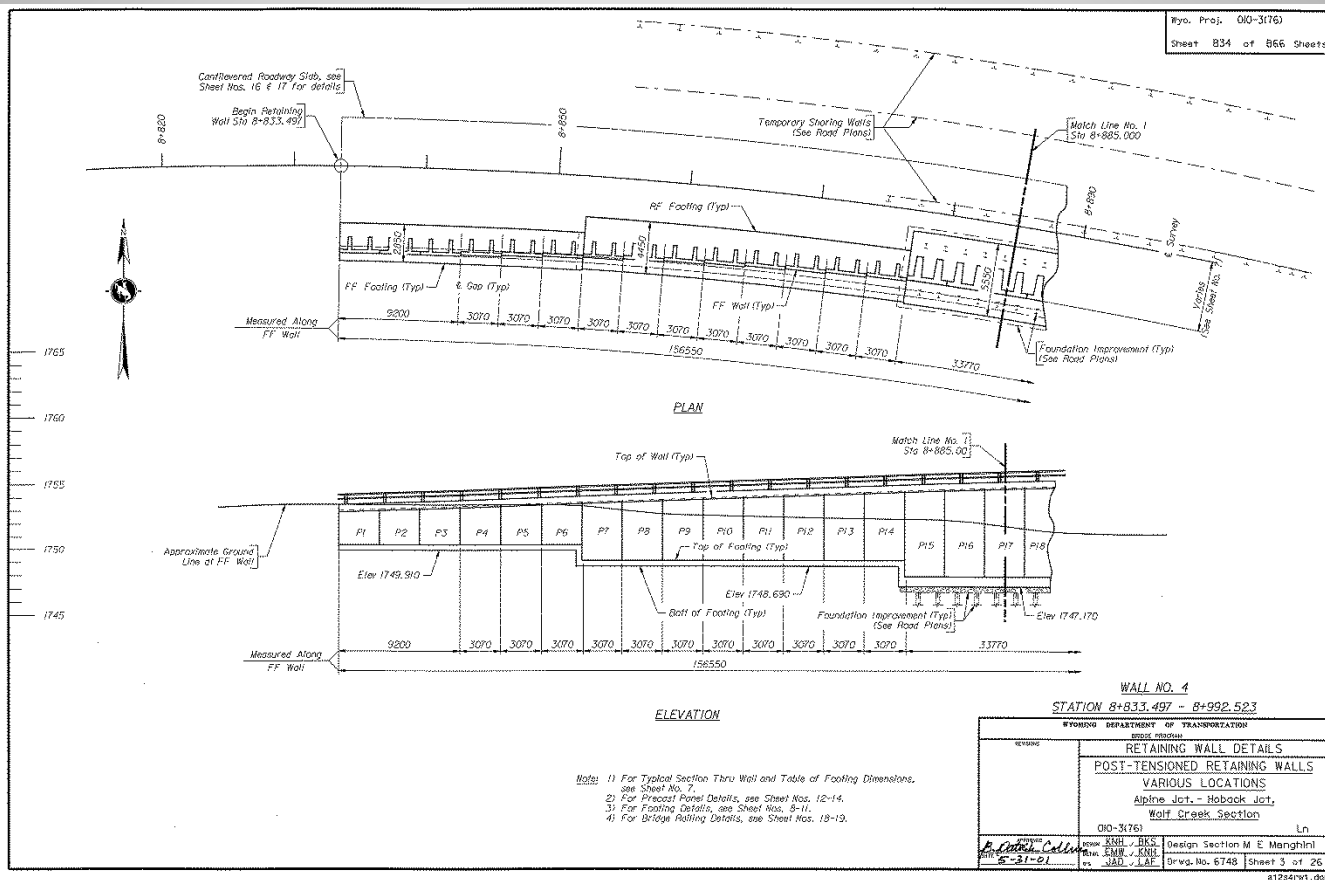
ABC WYOMING



Retaining walls



ABC WYOMING



WALL NO. 4
 STATION 8+833.497 - 8+992.523

WYOMING DEPARTMENT OF TRANSPORTATION ROADS DIVISION	
RETAINING WALL DETAILS	
POST-TENSIONED RETAINING WALLS	
VARIOUS LOCATIONS	
Alpine Jct. - Hoback Jct.	
Wolf Creek Section	
010-3176)	Ln.
DESIGNED BY JSH - BES	DESIGN SECTION M E Manghini
CHECKED BY JAD - JAF	DRW. NO. 6748
DATE 6-21-01	SHEET 3 OF 26

81241v1.dgn

ABC WYOMING



Questions?